

Supplementary table 1: characteristics of individuals in linked and unlinked tests				
	Linked		Unlinked	
	n	%	n	%
Overall Percentage of Linked and Unlinked Tests	156,930	89.8%	17,801	10.2%
<i>Characteristics of Dataset</i>				
Test Result				
positive results	44,590	28.4%	5,514	31.0%
negative results	112,340	71.6%	12,287	69.0%
Gender				
female	87,066	55.5%	10,521	59.1%
male	69,864	44.5%	7,280	40.9%
Ethnicity				
African	684	0.4%	249	1.4%
Another Asian background	1,348	0.9%	311	1.7%
Another Black background	114	0.1%	34	0.2%
Another ethnic background	798	0.5%	195	1.1%
Arab	286	0.2%	103	0.6%
Bangladeshi	648	0.4%	128	0.7%
Caribbean	1,062	0.7%	206	1.2%
Chinese	313	0.2%	48	0.3%
Indian	5,045	3.2%	794	4.5%
Mixed or multiple ethnic groups	638	0.4%	124	0.7%
Pakistani	2,497	1.6%	523	2.9%
Prefer not to say	7,236	4.6%	1,606	9.0%
White	136,261	86.8%	13,480	75.7%
New variant status of positive tests				
Non-SGTF	5,348	12.0%	590	10.7%
SGTF	16,780	37.6%	2,085	37.8%
Not known (not one of labs using TaqPath assay)	22,462	50.4%	2,839	51.5%
Previous positive (Ab or PCR) prior to 8 Dec 2020 *				
No	155,661	99.2%	17,678	99.3%
Yes	1,269	0.8%	123	0.7%
Age Group				
70-74	77,363	49.3%	7,479	42.0%
75-79	40,658	25.9%	4,475	25.1%
80-84	20,555	13.1%	2,736	15.4%
85-89	11,248	7.2%	1,663	9.3%
>=90	7,106	4.5%	1,448	8.1%
NHS Region				
East of England	21,757	13.9%	2,317	13.0%
London	21,749	13.9%	3,357	18.9%
Midlands	29,495	18.8%	3,220	18.1%
North East	20,264	12.9%	2,141	12.0%
North West	20,686	13.2%	2,285	12.8%
South East	28,806	18.4%	3,113	17.5%
South West	14,173	9.0%	1,368	7.7%
SGTF= S-gene target failure				

Supplementary table 2: Adjusted odds ratios for confirmed case by interval after vaccination for BNT162b2, age ≥ 70 years since 8th December

Interval (days)	Pfizer BioNTech			
	controls	cases	aOR (95% CI)	aOR vs day 4-9
unvacc	89,377	37,320	base	
d1:0-3	1624	817	1.18 (1.08-1.29)	
d1:4-6	1414	673	1.12 (1.02-1.24)	
d1:7-9	1387	748	1.23 (1.12-1.36)	
d1:10-13	1905	807	0.99 (0.91-1.08)	0.84 (0.76-0.94)
d1:14-20	2474	811	0.84 (0.77-0.91)	0.71 (0.64-0.79)
d1:21-27	1669	367	0.61 (0.54-0.69)	0.52 (0.46-0.60)
d1:28-34	1064	186	0.50 (0.42-0.59)	0.42 (0.35-0.50)
d1:35-41	534	105	0.57 (0.46-0.71)	0.49 (0.39-0.61)
d1:42+	460	65	0.44 (0.33-0.57)	0.37 (0.28-0.49)
d2:0-3	125	48	0.64 (0.46-0.90)	0.55 (0.39-0.77)
d2:4-6	88	34	0.67 (0.45-1.00)	0.57 (0.38-0.86)
d2:7-13	214	31	0.26 (0.18-0.39)	0.22 (0.15-0.33)
d2:14+	672	42	0.17 (0.12-0.23)	0.14 (0.10-0.20)

Supplementary table 3: Adjusted odds ratios for confirmed case by interval after vaccination for BNT162b2, vaccinations administered prior to 4th January 2021, age ≥ 80 years, including previously positive cases

Interval (days)	Pfizer BioNTech			
	controls	cases	aOR (95% CI)	aOR vs day 4-9
unvacc	90,193	37,389	1.18 (1.08-1.28)	
d1:0-3	1666	818	1.12 (1.02-1.23)	
d1:4-6	1428	674	1.23 (1.12-1.35)	
d1:7-9	1404	748	0.99 (0.90-1.08)	
d1:10-13	1922	807	0.84 (0.77-0.91)	0.84 (0.75-0.94)
d1:14-20	2507	813	0.61 (0.54-0.69)	0.71 (0.64-0.79)
d1:21-27	1693	367	0.49 (0.42-0.58)	0.52 (0.46-0.60)
d1:28-34	1088	186	0.58 (0.46-0.72)	0.42 (0.35-0.50)
d1:35-41	545	106	0.44 (0.34-0.58)	0.49 (0.39-0.62)
d1:42+	474	66	0.64 (0.46-0.90)	0.38 (0.29-0.50)
d2:0-3	126	48	0.67 (0.45-1.00)	0.55 (0.39-0.77)
d2:4-6	88	34	0.26 (0.18-0.38)	0.57 (0.38-0.86)
d2:7-13	217	31	0.17 (0.12-0.23)	0.22 (0.15-0.33)
d2:14+	679	42	0.17 (0.12-0.23)	0.14 (0.10-0.20)

Supplementary table 4: Adjusted odds ratios for confirmed case by interval after vaccination for ChAdOx1, vaccinations administered since 4th January 2021, age ≥ 70 years

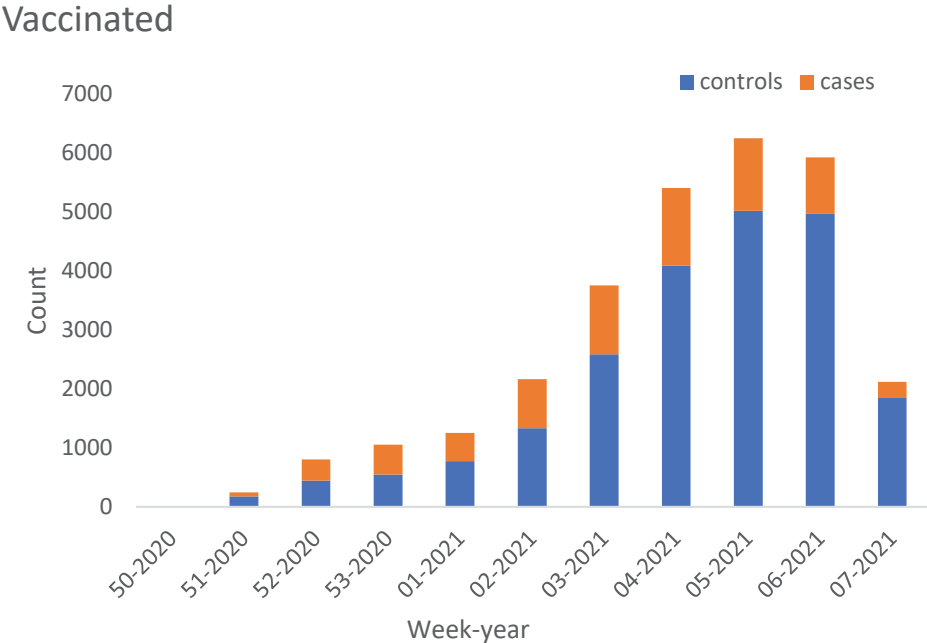
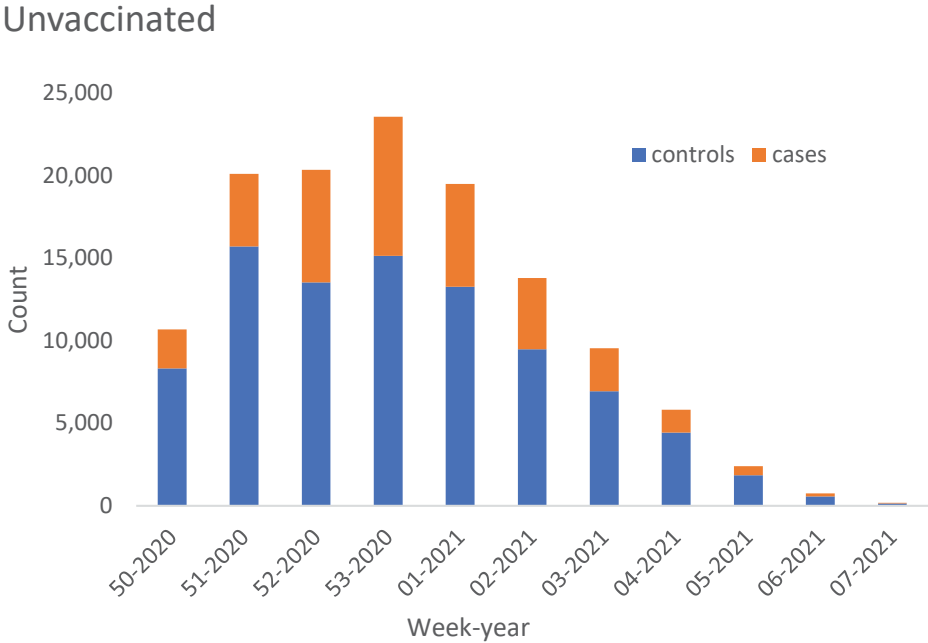
Interval (days)	Astrazeneca		
	controls	cases	aOR (95% CI)
unvacc	37,027	15,322	base
d1:0-3	2404	570	0.64 (0.58-0.71)
d1:4-6	1163	407	0.96 (0.85-1.09)
d1:7-9	1210	439	1.02 (0.90-1.16)
d1:10-13	1256	443	0.99 (0.87-1.12)
d1:14-20	1374	396	0.76 (0.66-0.87)
d1:21-27	639	148	0.54 (0.44-0.67)
d1:28-34	185	39	0.39 (0.27-0.57)
d1:35+	35	5	0.26 (0.10-0.68)

Supplementary table 5: Adjusted odds ratios for confirmed case by interval after vaccination for BNT162b2 by S-gene target failure status, age ≥ 70 years since 8th December

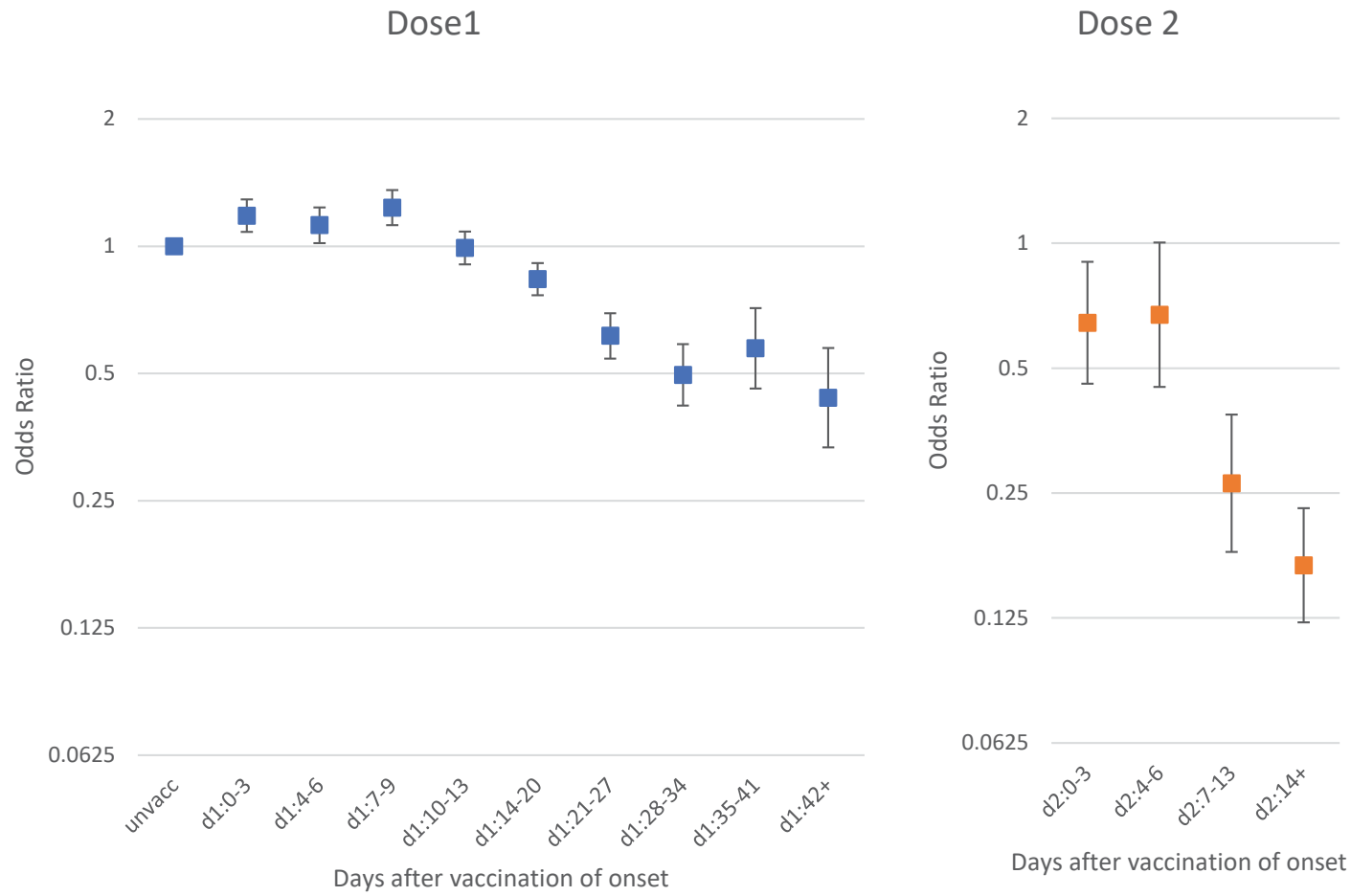
Interval (days)	SGTF				No SGTF			
	controls	cases	aOR (95% CI)	aOR vs day 4-9	controls	cases	aOR (95% CI)	aOR vs day 4-9
unvacc	8,080	2,742	base		8,080	1,199	base	
d1:0-3	134	53	1.36 (0.97-1.90)		134	18	0.92 (0.56-1.53)	
d1:4-6	120	46	1.30 (0.91-1.86)		120	24	1.23 (0.79-1.94)	
d1:7-9	125	79	1.55 (1.15-2.09)		125	23	1.05 (0.66-1.67)	
d1:10-13	181	88	1.13 (0.86-1.47)	0.78 (0.55-1.10)	181	37	1.24 (0.85-1.81)	1.09 (0.67-1.77)
d1:14-20	255	112	1.00 (0.79-1.26)	0.69 (0.50-0.96)	255	45	1.19 (0.85-1.66)	1.04 (0.66-1.66)
d1:21-27	180	61	0.74 (0.54-1.00)	0.51 (0.35-0.75)	180	11	0.69 (0.37-1.31)	0.61 (0.30-1.25)
d1:28-34	172	32	0.40 (0.27-0.60)	0.28 (0.18-0.44)	172	3	0.24 (0.07-0.78)	0.21 (0.06-0.72)
d1:35-41	158	38	0.56 (0.38-0.83)	0.39 (0.25-0.61)	158	1	0.13 (0.02-0.94)	0.11 (0.01-0.85)
d1:42+	247	33	0.32 (0.21-0.49)	0.22 (0.14-0.36)	247	3	0.28 (0.07-1.03)	0.24 (0.06-0.95)
d2:0-3	68	16	0.50 (0.28-0.87)	0.34 (0.19-0.63)	68	3	0.41 (0.13-1.32)	0.36 (0.11-1.21)
d2:4-6	51	10	0.39 (0.20-0.79)	0.27 (0.13-0.56)	51	4	0.77 (0.27-2.16)	0.67 (0.23-2.00)
d2:7-13	126	12	0.19 (0.10-0.34)	0.13 (0.07-0.25)	126	0		
d2:14+	395	16	0.10 (0.06-0.16)	0.07 (0.04-0.12)	395	0		

SGTF = S-gene target failure

Supplementary fig 1: Cases and controls by week and vaccination status

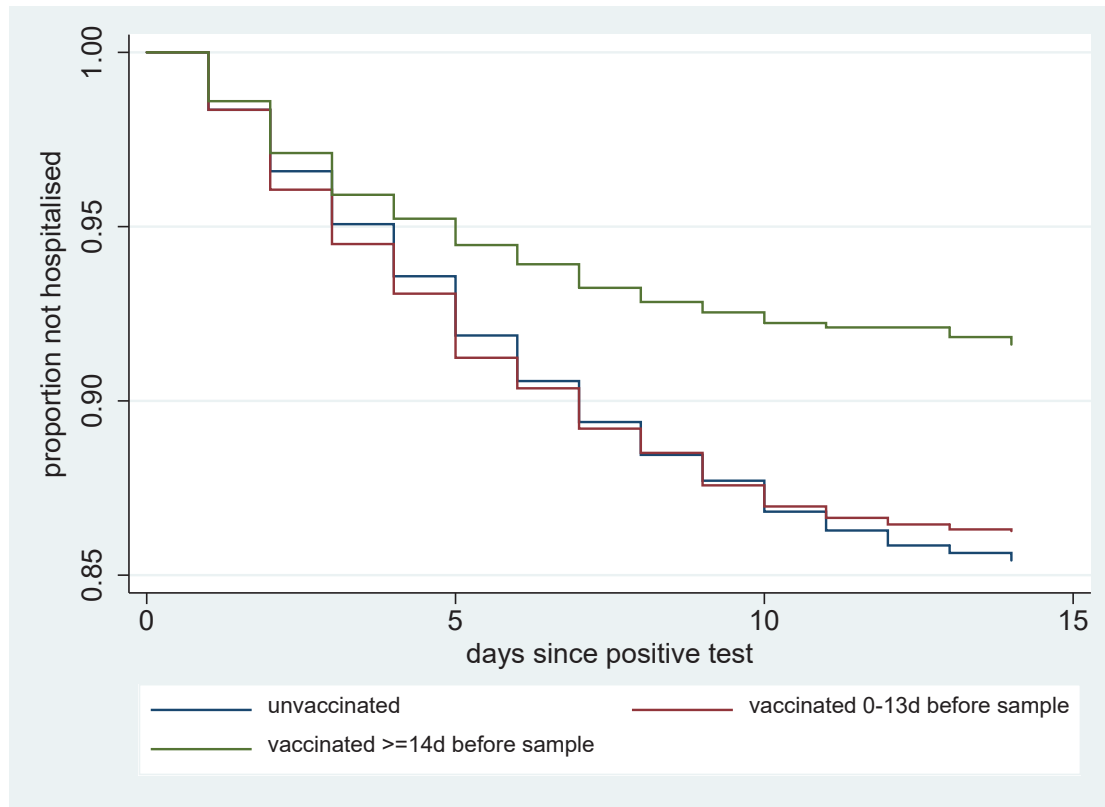


Supplementary fig 2: Adjusted odds ratios for confirmed case by interval after vaccination for BNT162b2, age ≥ 70 years since 8th December

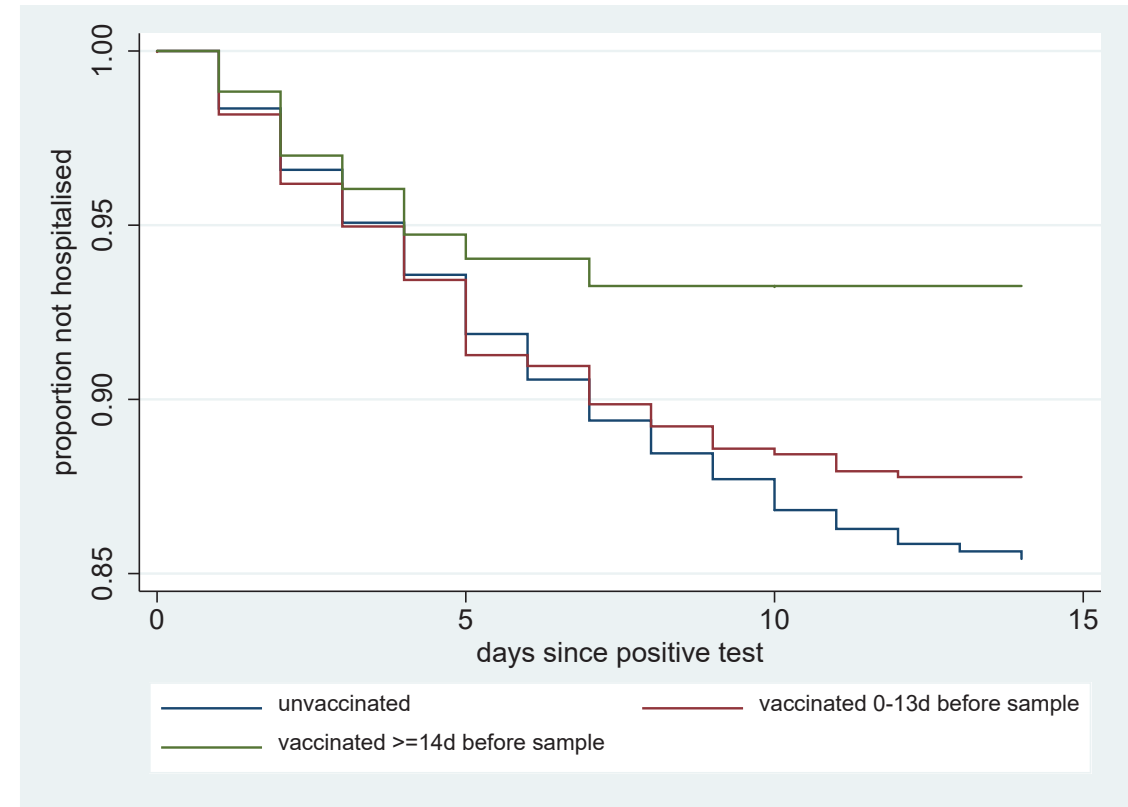


Supplementary fig 3: Kaplan-Meier curves for hospitalisations by vaccination status for BNT162b2 and ChAdOx1

(a) BNT162b2

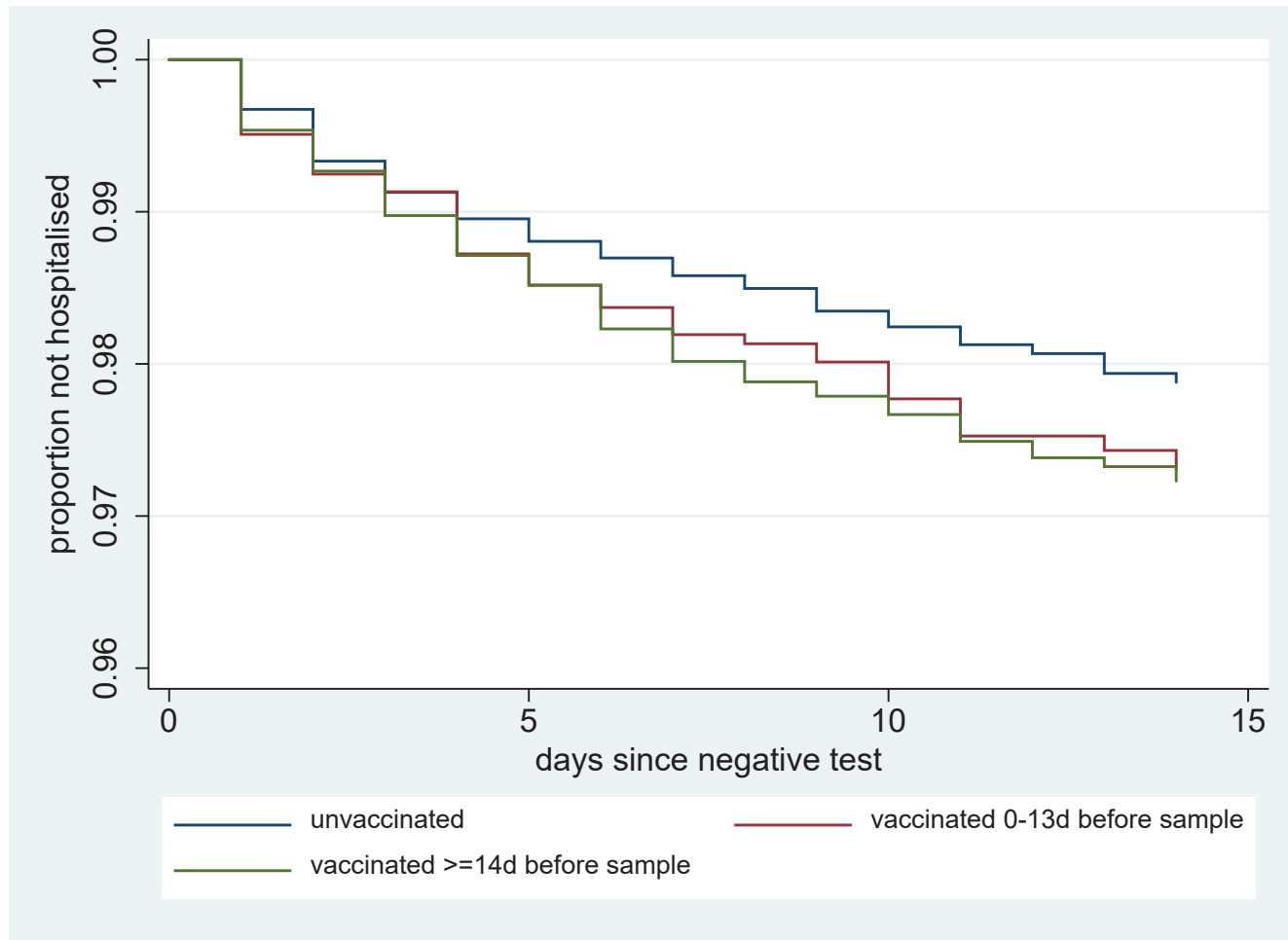


(b) ChAdOx1



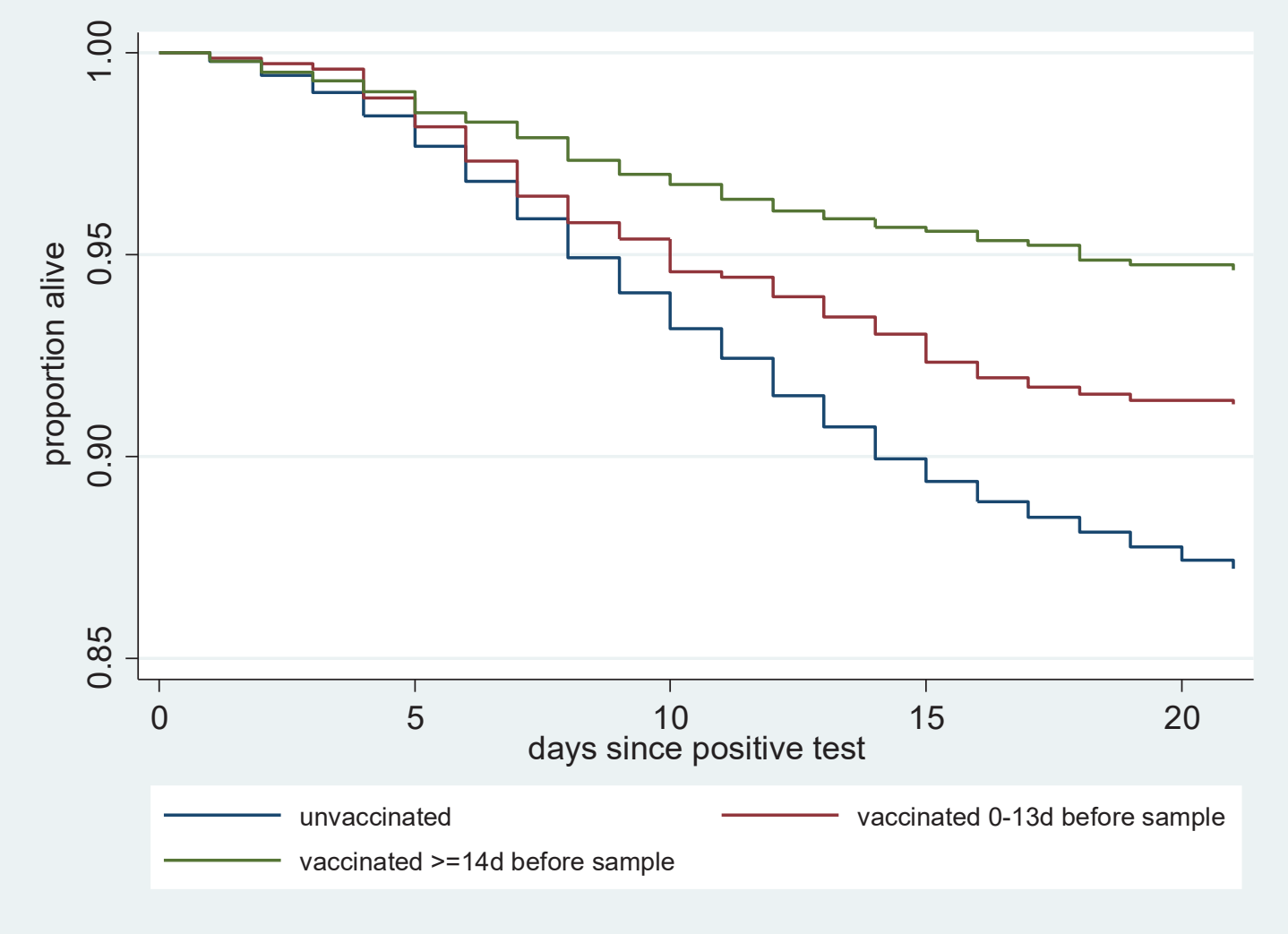
- (a) BNT162b2 Adjusting for age, care home, period and gender the hazard ratios compared to unvaccinated were 0.98 (95% CI 0.86-1.11) for days 0-13 and 0.56 (0.47-0.67) for days 14+.
- (b) ChAdOx1 Adjusting for age, care home, period and gender the hazard ratios compared to unvaccinated were 0.97 (95% CI 0.76-1.23) for days 0-13 and 0.58 (0.36-0.94) for days 14+.

Supplementary fig 4: control analysis - Kaplan-Meier curves for hospitalisation among test negatives



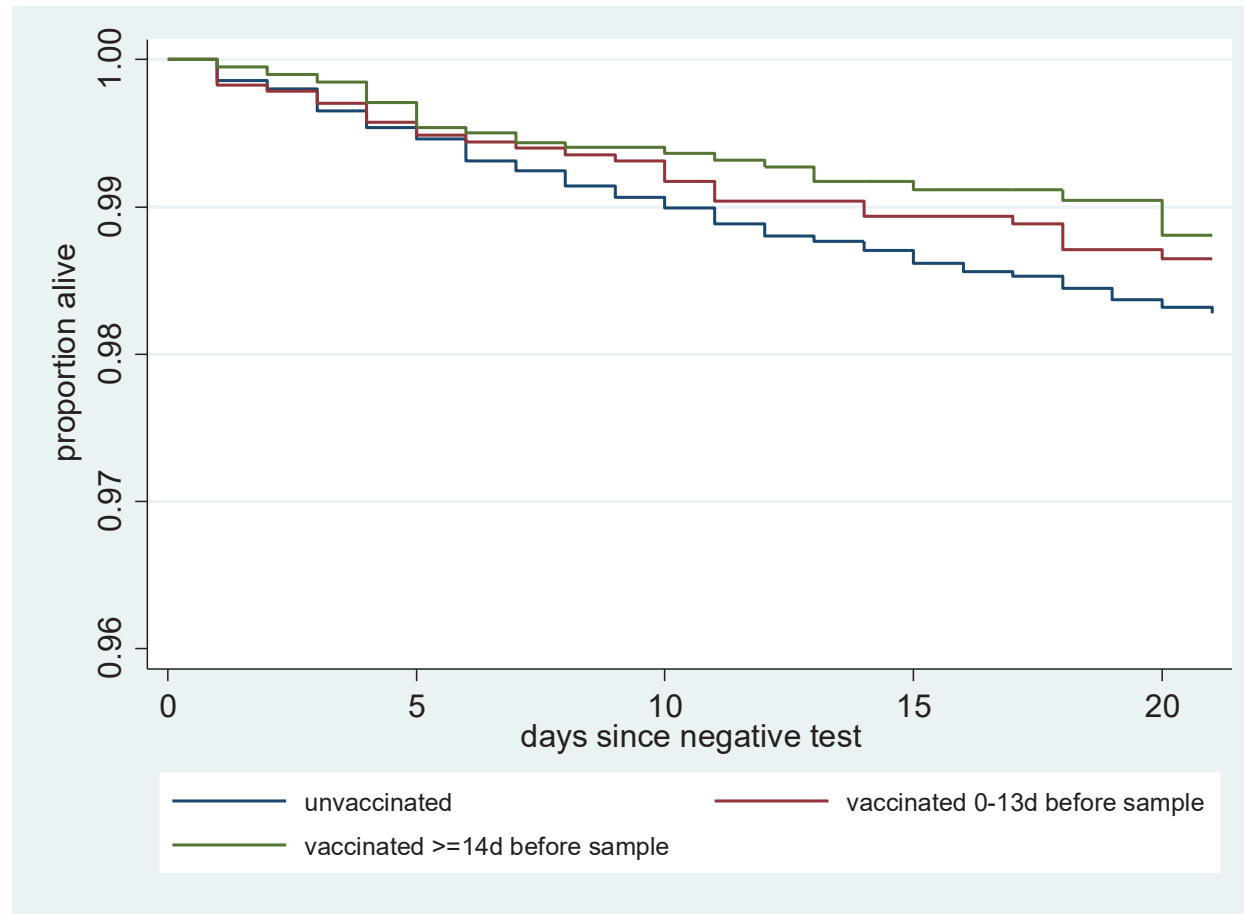
Adjusting for age, care home, period and gender the hazard ratios compared to unvaccinated were 1.24 (95% CI 0.98-1.56) for days 0-13 and 1.12 (0.89-1.41) for days 14+.

Supplementary fig 5: Kaplan-Meier curves for deaths by vaccination status for BNT162b2



Adjusting for age, care home, period and gender the hazard ratios compared to unvaccinated were 0.74 (95% CI 0.62-0.90) for days 0-13 and 0.49 (0.38-0.63) for days 14+.

Supplementary fig 6: control analysis - Kaplan-Meier curves for deaths among test negatives BNT162b2



The Hazard ratios are 0.92 (0.62-1.35) and 0.81 (0.54-1.21) for intervals of 0-13 and 14+ from dose 1.

Supplementary fig 7 completeness of vaccination data by days after vaccination

