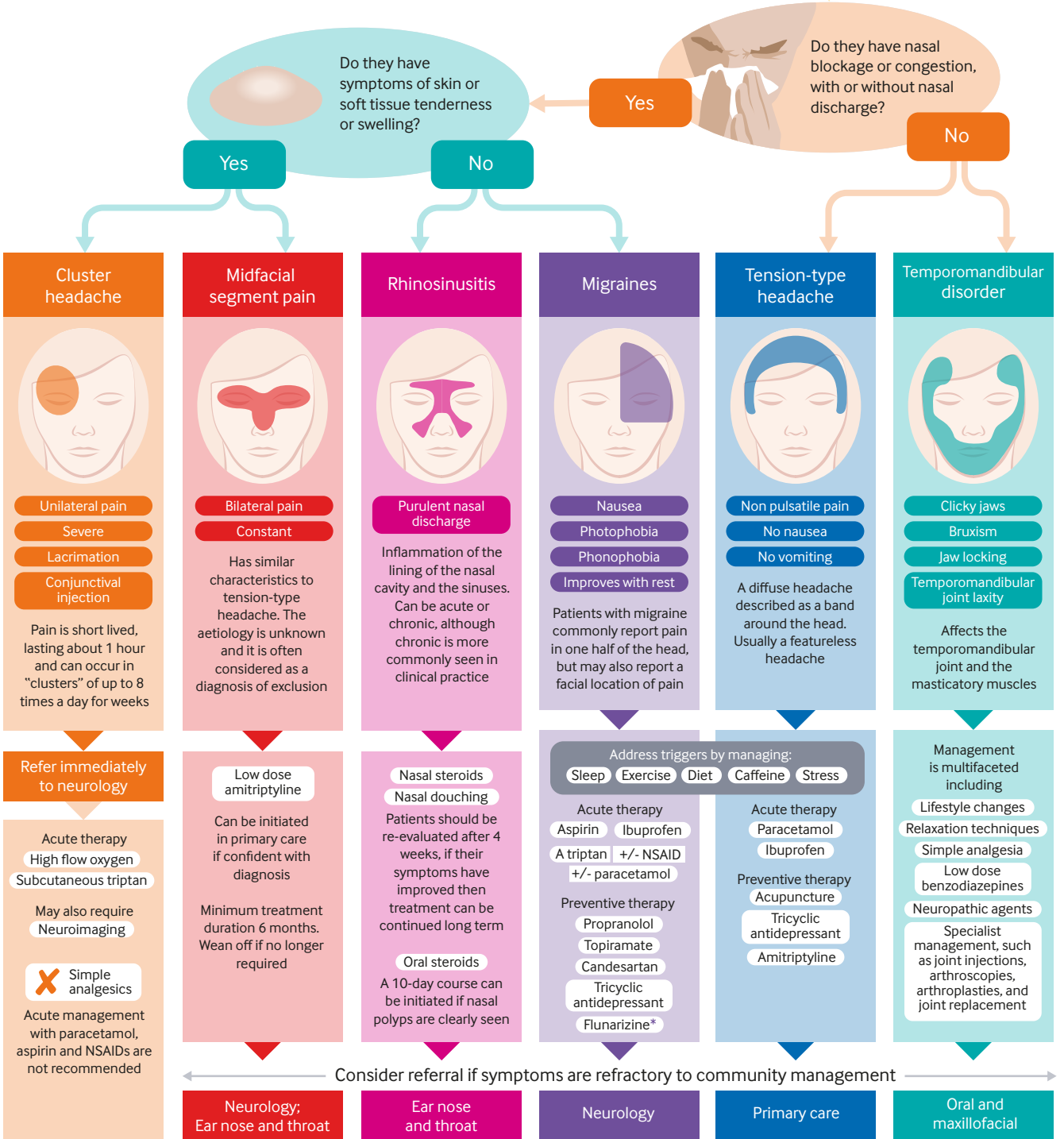


Identification and initial management

Chronic orofacial pain (lasting more than 12 weeks) can be debilitating for patients. After this time, primary care treatments have often been exhausted, and referral is an obvious next step. However, many cases are incorrectly attributed to rhinosinusitis, which can lead to inappropriate referrals and delay for patients. A more accurate diagnosis may be performed by focusing on the characteristics and associated features of facial pain, as described below.



* International drug licensing varies

© 2018 BMJ Publishing group Ltd.

Disclaimer: This infographic is not a validated clinical decision aid. This information is provided without any representations, conditions, or warranties that it is accurate or up to date. BMJ and its licensors assume no responsibility for any aspect of treatment administered with the aid of this information. Any reliance placed on this information is strictly at the user's own risk. For the full disclaimer wording see BMJ's terms and conditions: <http://www.bmj.com/company/legal-information/>

thebmj Read the full article online

<http://bit.ly/BMJofp>



See more visual summaries

<http://www.bmj.com/infographics>

