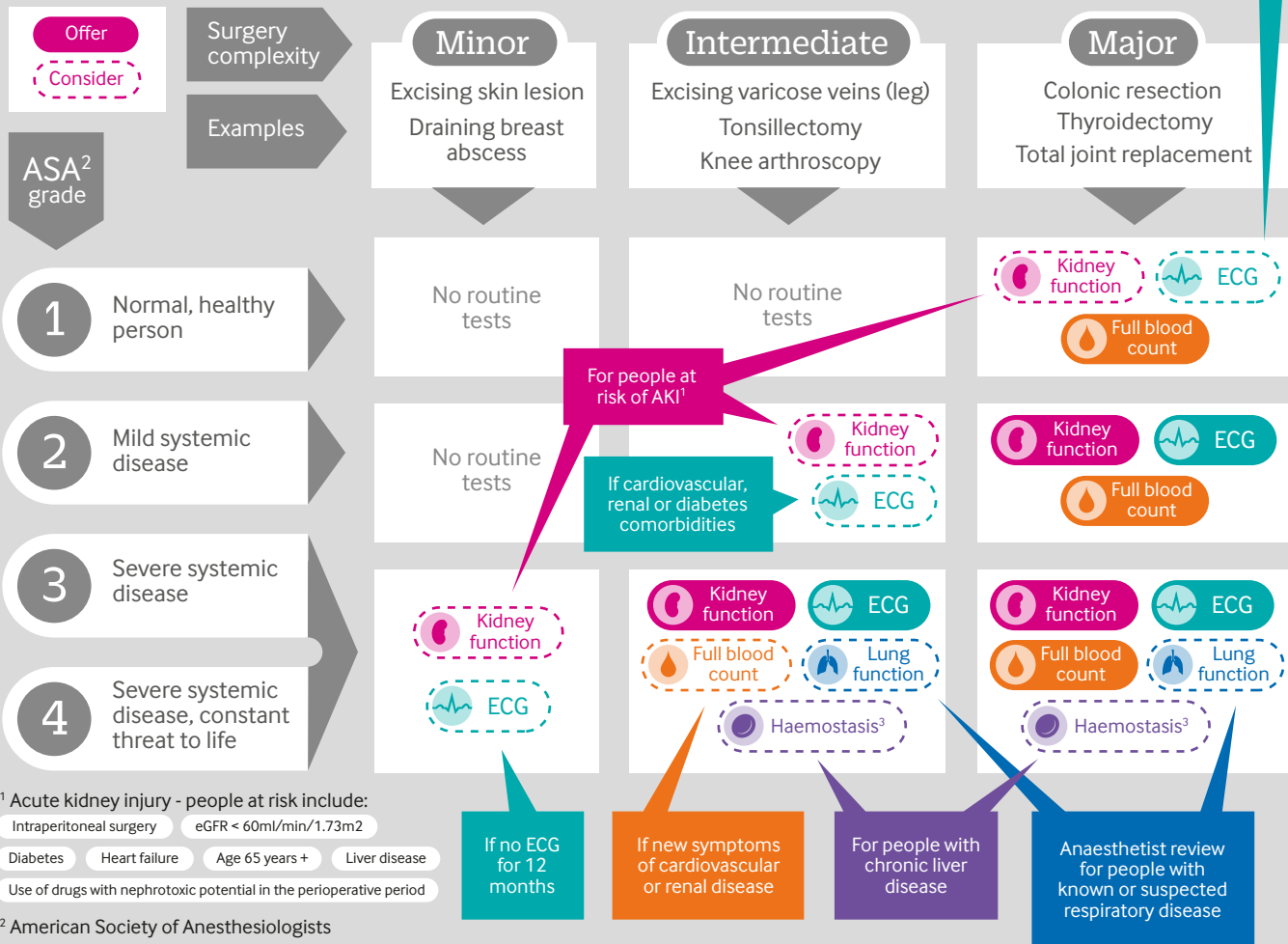


Recommended tests before elective surgery

by patient's physical status and surgery grade

If over 65 and no ECG for 12 months



¹ Acute kidney injury - people at risk include:

Intraperitoneal surgery eGFR < 60ml/min/1.73m²

Diabetes Heart failure Age 65 years + Liver disease

Use of drugs with nephrotoxic potential in the perioperative period

² American Society of Anesthesiologists

³ Tests such as (Activated) Partial Thromboplastin Time (APTT or PTT), and platelets