



# Role of diet in type 2 diabetes incidence: umbrella review of meta-analyses of prospective observational studies

Manuela Neuenschwander,<sup>1</sup> Aurélie Ballon,<sup>1</sup> Katharina S Weber,<sup>2,3</sup> Teresa Norat,<sup>5</sup> Dagfinn Aune,<sup>4,5,6</sup> Lukas Schwingshackl,<sup>7,8</sup> Sabrina Schlesinger<sup>1,3</sup>

For numbered affiliations see end of the article.

## Correspondence to:

S Schlesinger  
sabrina.schlesinger@ddz.de  
(ORCID 0000-0003-4244-0832)

Additional material is published online only. To view please visit the journal online.

Cite this as: *BMJ* 2019;365:l2368  
<http://dx.doi.org/10.1136/bmj.l2368>

Accepted: 8 May 2019

## ABSTRACT

### OBJECTIVE

To summarise the evidence of associations between dietary factors and incidence of type 2 diabetes and to evaluate the strength and validity of these associations.

### DESIGN

Umbrella review of systematic reviews with meta-analyses of prospective observational studies.

### DATA SOURCES

PubMed, Web of Science, and Embase, searched up to August 2018.

### ELIGIBILITY CRITERIA

Systematic reviews with meta-analyses reporting summary risk estimates for the associations between incidence of type 2 diabetes and dietary behaviours or diet quality indices, food groups, foods, beverages, alcoholic beverages, macronutrients, and micronutrients.

### RESULTS

53 publications were included, with 153 adjusted summary hazard ratios on dietary behaviours or diet quality indices (n=12), food groups and foods (n=56), beverages (n=10), alcoholic beverages (n=12), macronutrients (n=32), and micronutrients (n=31), regarding incidence of type 2 diabetes. Methodological quality was high for 75% (n=115) of meta-analyses, moderate for 23% (n=35), and low for

2% (n=3). Quality of evidence was rated high for an inverse association for type 2 diabetes incidence with increased intake of whole grains (for an increment of 30 g/day, adjusted summary hazard ratio 0.87 (95% confidence interval 0.82 to 0.93)) and cereal fibre (for an increment of 10 g/day, 0.75 (0.65 to 0.86)), as well as for moderate intake of total alcohol (for an intake of 12-24 g/day v no consumption, 0.75 (0.67 to 0.83)). Quality of evidence was also high for the association for increased incidence of type 2 diabetes with higher intake of red meat (for an increment of 100 g/day, 1.17 (1.08 to 1.26)), processed meat (for an increment of 50 g/day, 1.37 (1.22 to 1.54)), bacon (per two slices/day, 2.07 (1.40 to 3.05)), and sugar sweetened beverages (for an increase of one serving/day, 1.26 (1.11 to 1.43)).

### CONCLUSIONS

Overall, the association between dietary factors and type 2 diabetes has been extensively studied, but few of the associations were graded as high quality of evidence. Further factors are likely to be important in type 2 diabetes prevention; thus, more well conducted research, with more detailed assessment of diet, is needed.

### SYSTEMATIC REVIEW REGISTRATION

PROSPERO CRD42018088106.

## Introduction

Diabetes mellitus is a global health problem, with a prevalence of 8.8%. Both the incidence and prevalence of the disorder are projected to rise. An estimated 425 million adults are living with diabetes mellitus worldwide.<sup>1</sup> Patients with diabetes mellitus are at increased risk for many other health problems, which are associated with high healthcare costs.<sup>2,3</sup> According to the International Diabetes Federation, associated healthcare costs in 2017 were an estimated US\$727bn (£574bn; €652bn) worldwide, which is an 8% rise compared with 2015.<sup>1</sup> Thus, the prevention and management of this disease is of major importance to public health interest. Type 2 diabetes is the most common type of diabetes mellitus and accounts for 90% of all cases of diabetes.<sup>1</sup> Although unmodifiable factors such as family history and age partly have a role in the causal pathway of type 2 diabetes, modifiable factors such as lifestyle factors (including diet) contribute to the onset of the disorder as well.<sup>4</sup> Changes in these lifestyle factors could reduce the risk of type 2 diabetes and influence the progression of this disease.<sup>5-7</sup>

A large body of research is available on the association between dietary factors and the incidence of type 2 diabetes. In the past few decades, many

## WHAT IS ALREADY KNOWN ON THIS TOPIC

A large body of research is available regarding the association of type 2 diabetes incidence with dietary behaviours or diet quality indices, food groups, single foods and beverages, macronutrients, and micronutrients

These findings could be of importance given the substantial global health burden and healthcare costs of type 2 diabetes

However, the strength, precision, and influence of potential bias regarding these associations need to be clarified

## WHAT THIS STUDY ADDS

In an umbrella review of meta-analyses including observational studies, existing evidence indicates that dietary factors have a role in the development and prevention of type 2 diabetes

Although the methodological quality of the meta-analyses was mostly high, quality of evidence was only high for whole grains, cereal fibre, and moderate total alcohol intake (associated with a reduced incidence of type 2 diabetes) and for red meat, processed meat, bacon, and sugar sweetened beverages (associated with an increased incidence of type 2 diabetes)

Future studies should attain dietary data with high validity and focus on dietary exposures and specific food groups for which quality of evidence has been low; and publish more comprehensive analyses including data on less frequently investigated and subtypes of dietary exposures

published systematic reviews and meta-analyses have summarised evidence on the associations between dietary behaviours or diet quality indices, food groups, single foods and beverages, alcohol, specific macronutrients and micronutrients, and the incidence of type 2 diabetes. These findings could be of importance for the prevention of the disease. However, the strength, precision, and influence of potential bias regarding these associations need to be clarified.

Umbrella reviews are useful tools that provide a comprehensive overview of evidence of published systematic reviews and meta-analyses on a specific topic. They can elucidate the strength of evidence and the precision of the estimates, and evaluate risk of bias of the published reports.<sup>8</sup> Recent reports summarised evidence for selected dietary factors regarding prevention of type 2 diabetes.<sup>9-11</sup> Strong evidence was observed for a decreased incidence of type 2 diabetes with higher consumption of whole grains<sup>10 11</sup> and higher adherence to a healthy dietary pattern,<sup>10</sup> as well as an increased incidence of the disease for a higher intake of total red meat,<sup>11</sup> processed meat,<sup>10 11</sup> and sugar sweetened beverages.<sup>10 11</sup> Micha and colleagues summarised findings with probable or convincing evidence and found a higher incidence of type 2 diabetes with a low intake of whole grain, yogurt, nuts or seeds, and dietary fibre as well as with high consumption of unprocessed red meat, processed meat, foods with a high glycaemic load, and sugar sweetened beverages.<sup>9</sup> However, none of these studies focused on any existing evidence between dietary factors (such as dietary behaviours or diet quality indices, food groups, foods and beverages, alcoholic beverages, macronutrients, and micronutrients) and incidence of type 2 diabetes. Furthermore, the methodological quality of the meta-analyses and quality of evidence remain to be assessed by validated tools. Thus, this study aimed to conduct an umbrella review of meta-analyses to gain a systematic, comprehensive overview of the existing evidence of prospective observational studies on dietary factors (including those mentioned above) and incidence of type 2 diabetes in adults and to assess its strength and validity.

### Methods

Our protocol has been registered in PROSPERO (CRD42018088106). The systematic literature search was conducted according to the preferred reporting items for systematic reviews and meta-analyses (PRISMA) guidelines.<sup>12</sup>

### Literature search

The systematic literature search was conducted in PubMed, Web of Science, and Embase until August 2018 for meta-analyses of observational studies investigating the association between diet and type 2 diabetes, using a predefined search strategy (supplementary table 1). We did not apply any restrictions or filters. We also screened the reference lists of relevant reviews and meta-analyses. The

literature search was conducted by two authors (MN, SS). Disagreements were resolved by consensus.

### Selection of meta-analyses

Studies were included if they met the following criteria: (1) included meta-analysis of observational prospective cohort studies in adults with multivariable adjusted summary risk estimates and corresponding 95% confidence intervals, (2) considered the incidence of type 2 diabetes as the outcome, (3) investigated the association of different dietary factors assessed by established dietary assessment instruments (eg, food frequency questionnaires, diet history, 24 hour dietary recalls, and dietary records) with incidence of type 2 diabetes. Eligible dietary factors included:

- Dietary behaviours or diet quality indices, including dietary patterns as combinations of nutrients, foods, and beverages. Examples are breakfast skipping for dietary behaviours; glycaemic index, glycaemic load, or potential renal acid load for dietary quality indices; the Healthy Eating Index (HEI), Dietary Approaches to Stop Hypertension (DASH), Mediterranean diet, or vegetarian diet for a priori dietary patterns; and the application of principal component analysis, factor analysis, or reduced rank regression for exploratory-derived dietary patterns
- Food groups, foods, and beverages, including dairy products, eggs, meat, fish, fats (eg, butter) and oils, potatoes, whole grain, grains, cereals, rice, legumes, nuts, vegetables, fruit, tea, coffee, sugar sweetened beverages, and alcoholic beverages
- Macronutrients (carbohydrates, fats, protein), micronutrients (vitamins, minerals), fibre, and polyphenols.

Studies were excluded if they were primary studies, if no summary estimate was reported (eg, systematic reviews without meta-analysis), if they were pooled analyses of cohorts with individual patient data, or if the meta-analyses considered type 1 diabetes or gestational diabetes as outcome. We also excluded publications reporting on exposure of plasma levels or biomarkers rather than dietary intake. If more than one published meta-analysis on the same association was identified, we chose only one meta-analysis for each exposure to avoid the inclusion of duplicate studies. In that case, we included the one with the largest number of primary studies. If more than one published meta-analysis included the same number of studies, the one with the largest number of people with type 2 diabetes was chosen. If more than one published meta-analysis fulfilled both criteria, the one with more available information (eg, dose-response meta-analysis) was selected.

### Data extraction

Data was extracted by one author (MN) and double-checked by a second author (AB). For each published meta-analysis, we extracted the following data: name of the first author, publication year, exposure (including

dose of exposure), number of included studies, study design of the primary studies, total number of cases and participants, type of comparison (high v low meta-analysis or dose-response meta-analysis), quality score of primary studies (mean) if reported, publication bias, information on funding, and conflict of interest.

For each primary study included in the published meta-analysis, we extracted the first author's name, year of publication, exposure (including dose of exposure), number of total cases, number of participants, and hazard ratios that adjusted for the most confounders, along with their 95% confidence intervals, as well as adjustment factors included in the model to check if relevant confounders were accounted for. Based on the literature, the most important potential confounders in the investigation between dietary factors and incidence of type 2 diabetes include age, sex, smoking, physical activity, overweight, and other dietary factors, including total energy intake, alcohol intake, and family history of diabetes.

#### Assessment of methodological quality

The methodological quality of each included published meta-analysis was evaluated by the validated AMSTAR tool (a measurement tool to assess the methodological quality of systematic reviews).<sup>13-15</sup> It includes 11 items about the conduct of a meta-analysis, including the literature search, study selection and data extraction, reporting of included and excluded studies, quality assessment of the included studies, statistical methods for the meta-analysis, publication bias, and conflict of interest. Each question can be answered with "yes," "no," "can't answer," and "not applicable." A "yes" scores one point, whereas the other answers score 0 points.<sup>15</sup> An overall score of at least 8 points was defined as the cutoff value for high quality, 4-7 points as moderate quality, and 3 points or less as low quality.<sup>16</sup>

#### Evaluation of quality of evidence

The quality of evidence was evaluated by using a modified version of NutriGrade<sup>17</sup> (modifications described in supplementary table 5). It is a numerical scoring system (maximum 10 points), which includes eight items:

- Risk of bias, study quality, or study limitations (mean of all primary studies included in the published meta-analysis; 0-2 points)
- Precision of the estimate (0-1 points)
- Heterogeneity (0-1 point)
- Directness (eg, whether there were differences in the study populations or interventions; 0-1 point)
- Publication bias (0-1 point)
- Funding bias (0-1 point)
- Effect size (0-2 points)
- Dose-response association (0-1 point).

An overall score of at least 8 points was assigned to high quality of evidence, which means that there is high confidence in the effect estimate and that further research probably will not change that confidence in the effect estimate. An overall score of 6 to <8 points

was assigned to moderate confidence in the effect estimate, where further research could add evidence on the confidence and could change the effect estimate. An overall score of 4 to <6 points meant that there was low confidence in the effect estimate, and that further research would provide important evidence on the confidence and would likely change the effect estimate. Scores less than 4 points was assigned to very low quality of evidence, which meant that the quality of evidence was very limited and uncertain.<sup>17</sup> Therefore, the quality of evidence for an association could be high despite possible shortcomings (eg, high heterogeneity and indication for publication bias) if the meta-analysis scores the maximum amount of points for the other items.

#### Data analysis

##### *Assessment of summary effects*

For each exposure, we recalculated the chosen meta-analysis using hazard ratios of the primary studies included in the published meta-analyses that adjusted for the most confounders. We recalculated the adjusted summary hazard ratios and corresponding 95% confidence intervals by using the random effects model by DerSimonian and Laird, which takes into account heterogeneity both within and between studies.<sup>18</sup> We used this approach to ensure that all adjusted summary hazard ratios were calculated by a random effects model and to receive further information for the evaluation of the quality of evidence (including  $\tau^2$ , 95% prediction intervals,  $I^2$ , and publication bias). Since this method has been used in previous meta-analyses, we chose this approach to ensure comparability with the published meta-analyses.

When the published meta-analysis presented hazard ratios from the same cohort separately by sex or race, we first combined the hazard ratios per cohort using fixed effect methods, before conducting the overall meta-analysis. If the published meta-analysis included retrospective case-control studies or cross sectional studies as well as prospective cohort studies, we only included results from the prospective cohort studies in our meta-analysis. If the published meta-analysis included a primary study only reporting unadjusted estimates, this study was excluded from the reanalysis. We recalculated dose-response meta-analyses if the dose-response estimate for each primary study was presented separately. If this information was missing, we could not recalculate the dose-response meta-analysis, but extracted the adjusted summary hazard ratios from the published meta-analysis. If the 95% confidence interval of an adjusted summary hazard ratio included the null value and the quality of evidence was moderate, low, or very low, this was interpreted as no clear association. If the quality of evidence was high, the adjusted summary hazard ratio of 1.0 (or close to 1.0, respectively), and the 95% confidence interval of the adjusted summary hazard ratios was very narrow and included the null value, we assumed that an association was unlikely. All calculations were conducted with Stata 14.1.

### Assessment of heterogeneity

In each meta-analysis, we evaluated heterogeneity by using the  $I^2$  statistic. The  $I^2$  value ranges from 0% to 100% and represents the percentage of the total variation across studies that can be explained by heterogeneity.<sup>19</sup> However,  $I^2$  is dependent on the study size (it increases with increasing study size). Therefore, we also calculated  $\tau^2$ , which is independent of study size and describes variability between studies, in relation to the risk estimates.<sup>20</sup> Finally, we calculated 95% prediction intervals, which also account for heterogeneity and show the range in which the underlying true effect size of future studies will lie with 95% certainty.<sup>20</sup>

### Assessment of publication bias and small study effect

Publication bias and small study effects were assessed for each meta-analysis by graphical and statistical tests, namely the funnel plot and Egger's test.<sup>21 22</sup> Therefore, the primary studies from the meta-analyses included in our umbrella review, were plotted. A P value less than 0.10 was taken as statistical evidence of the presence of small study effects (potential publication bias).<sup>22</sup>

### Patient and public involvement

This research was done without patient involvement. Patients were not invited to comment on the study design and were not consulted to develop patient relevant outcomes or interpret the results. Patients were not invited to contribute to the writing or editing of this document for readability or accuracy. The results of this study will be disseminated to the public through a press release, published at the website of the German Diabetes Centre, the web based information platform of the National Diabetes Information Centre (<https://diabetesinformationsdienst.de>) and our partners, including the German Centre for Diabetes Research (Deutsches Zentrum für Diabetesforschung: DZD) and the Leibniz Association. In addition, findings will be spread via social media.

### Results

Of the 11 413 publications initially identified, we finally selected 53 published meta-analyses including 153 adjusted summary hazard ratios (supplementary figure 1) on dietary behaviours or diet quality indices (n=12), food groups and foods (n=56), beverages (n=10), alcoholic beverages (n=12), macronutrients (n=32), and micronutrients (n=31), regarding incidence of type 2 diabetes. These 153 adjusted summary hazard ratios correspond to one meta-analysis per exposure. If a high versus low meta-analysis as well as a dose-response meta-analysis was available for one exposure, we presented the dose-response meta-analysis. A list of excluded studies can also be found in supplementary table 2.

We found meta-analyses on the following exposures: healthy dietary pattern,<sup>23</sup> unhealthy dietary pattern,<sup>24</sup> HEI,<sup>25</sup> alternative HEI (AHEI),<sup>25</sup> DASH,<sup>25</sup> Mediterranean

diet,<sup>26</sup> vegetarian diet,<sup>27</sup> low carbohydrate diet,<sup>28</sup> breakfast skipping,<sup>29</sup> high glycaemic index,<sup>30</sup> high glycaemic load,<sup>30</sup> dietary acid load,<sup>31</sup> dairy<sup>11</sup> and dairy products,<sup>32-34</sup> chocolate,<sup>35</sup> eggs,<sup>11</sup> meat<sup>36</sup> and specific types of meat,<sup>36-39</sup> total fish or seafood<sup>11 40</sup> and types of fish,<sup>40</sup> butter,<sup>41</sup> olive oil,<sup>42</sup> potatoes and types of potatoes,<sup>43</sup> whole grain<sup>11</sup> and whole grain products,<sup>44</sup> refined grain,<sup>11</sup> rice,<sup>45</sup> white rice,<sup>44</sup> brown rice,<sup>44</sup> soy products,<sup>46</sup> legumes,<sup>11</sup> nuts,<sup>11</sup> fruit and vegetables,<sup>47</sup> total fruit<sup>11</sup> and specific types of fruit,<sup>48-50</sup> total vegetables<sup>11</sup> and specific types of vegetables,<sup>51 52</sup> tea,<sup>53</sup> coffee,<sup>54 55</sup> sugar sweetened beverages,<sup>56</sup> artificially sweetened beverages,<sup>56</sup> total fruit juice<sup>56</sup> and types of fruit juice,<sup>57</sup> total protein and types of protein,<sup>58</sup> animal protein-to-potassium ratio,<sup>31</sup> total fat,<sup>59</sup> types of fat<sup>59</sup> and fatty acids,<sup>59-62</sup> dietary cholesterol,<sup>63</sup> carbohydrates<sup>59</sup> and types of carbohydrates,<sup>59 64</sup> total fibre<sup>65</sup> and types of fibre,<sup>65</sup> vitamin D,<sup>66</sup> niacin,<sup>67</sup> iron,<sup>68</sup> magnesium,<sup>69</sup> calcium,<sup>70</sup> selenium,<sup>71</sup> polyphenols and subgroups of polyphenols<sup>72</sup> and antioxidants,<sup>73</sup> as well as total alcohol,<sup>74</sup> wine, beer, and spirits.<sup>75</sup>

### Description of published meta-analyses

For most exposures, we identified more than one published meta-analysis on the same topic in our search. These published meta-analyses were in agreement regarding the direction and magnitude of the adjusted summary hazard ratios (data not shown, but available on request), because they usually included the same primary studies with an update of one or two additional primary studies. Exceptions were two published meta-analyses on egg intake and incidence of type 2 diabetes from 2013, which found a moderate association for an increased incidence of the disease in a high versus low meta-analysis and for an increase of four eggs/week,<sup>76 77</sup> by contrast with more recently published meta-analyses that did not find an association.<sup>11 78 79</sup> All published meta-analyses included primary studies from the United States, Europe, and Asia or Australia. All included primary studies (n=277) conducted multivariable adjustment with 22% (n=62) using multivariable logistic regression and 78% (n=215) using the Cox proportional hazard regression model. In 49% (n=106) of these studies, the proportional hazard assumption was evaluated and no violations were observed, while 51% (n=109) of the studies did not provide any information about the evaluation of the assumption.

Almost all of the primary studies (90%) adjusted for age (n=254) and sex (n=249), 88% (n=243) for smoking, 86% for body mass index (n=239) and for physical activity (n=238), 67% (n=184) for total energy intake, 65% (n=181) for alcohol intake, 60% (n=167) for other dietary factors and cardiovascular risk factors (eg, hypertension), and 52% (n=143) for family history of diabetes. Three primary studies only reported unadjusted estimates and were therefore excluded from the meta-analyses on milk,<sup>80</sup> total coffee,<sup>80</sup> and total alcohol,<sup>81 82</sup> which did not affect the results. Information on linearity of the dose-response relations (eg, P for non-linearity) were available for 72%



(n=67) of the dose-response meta-analyses (n=93). A third of these dose-response relations indicated non-linearity (potential renal acid load, yogurt, ice cream, chocolate, processed meat, olive oil, whole grain, total grains, whole grain bread, whole grain cereals, wheat bran, brown rice, total fruit, apples and pears, total vegetables, cereal fibre, fruit fibre, vegetable fibre, magnesium, and anthocyanins).

#### Methodological quality

Overall scores of AMSTAR for each published meta-analysis are shown in supplementary table 3, with the single items summarised in supplementary table 4. The conduct of the meta-analyses was rated as high ( $\geq 8$  points) for 75% (n=115) of the published meta-analyses, moderate (4-7 points) for 23% (n=35), and low (0-3 points) for 2% (n=3).<sup>36</sup> In the report with the low methodological quality, the methods section was completely missing and thus the methodological quality was rated as low.<sup>36</sup> In general, main flaws were that grey literature was not accounted for in the literature search, no list of excluded studies was provided, study quality was not assessed or the influence of the quality of the individual studies on the results was not discussed, and publication bias was not assessed.

#### Associations and quality of evidence between dietary factors and incidence of type 2 diabetes

Adjusted summary hazard ratios and the quality of evidence for each exposure are summarised in figure 1, figure 2, figure 3, figure 4, figure 5, and figure 6 and are reported in supplementary table 3. The grading of every item of NutriGrade is shown in supplementary table 5. In total, the evidence was graded as high for 5% (n=7) of the associations. Moderate, low, and very low quality of evidence was found for 22% (n=33),

60% (n=92), and 14% (n=21) of the associations, respectively.

#### Dietary behaviours or diet quality indices

Figure 1 shows the adjusted summary hazard ratios with their corresponding 95% confidence intervals and the quality of evidence for the associations between dietary behaviours or diet quality indices and the incidence of type 2 diabetes. No association was rated with high quality of evidence. Higher versus lower adherence to a healthy dietary pattern and the AHEI was associated with a decreased incidence of type 2 diabetes with moderate quality of evidence. The associations between diets with a high potential renal acid load and high glycaemic load, as well as an unhealthy dietary pattern, which was derived from reduced rank regression, and increased incidence of type 2 diabetes were also rated with moderate quality of evidence. The quality of evidence for the associations between the other dietary patterns (HEI, DASH, Mediterranean diet, vegetarian diet, consumption of foods with a high glycaemic index, breakfast skipping, and a low carbohydrate diet) and incidence of type 2 diabetes were rated as low to very low.

#### Food groups, foods, and beverages

Figure 2 shows the adjusted summary hazard ratios with their corresponding 95% confidence intervals and the quality of evidence for the associations between food groups and foods and the incidence of type 2 diabetes. High quality of evidence was found for an inverse association of type 2 diabetes, whereby an increased intake of whole grain was associated with a reduced incidence of the disease (for an increment of 30 g/day, adjusted summary hazard ratio 0.87 (95% confidence interval 0.82 to 0.93)). We also found an increased incidence of type 2 diabetes for higher intake

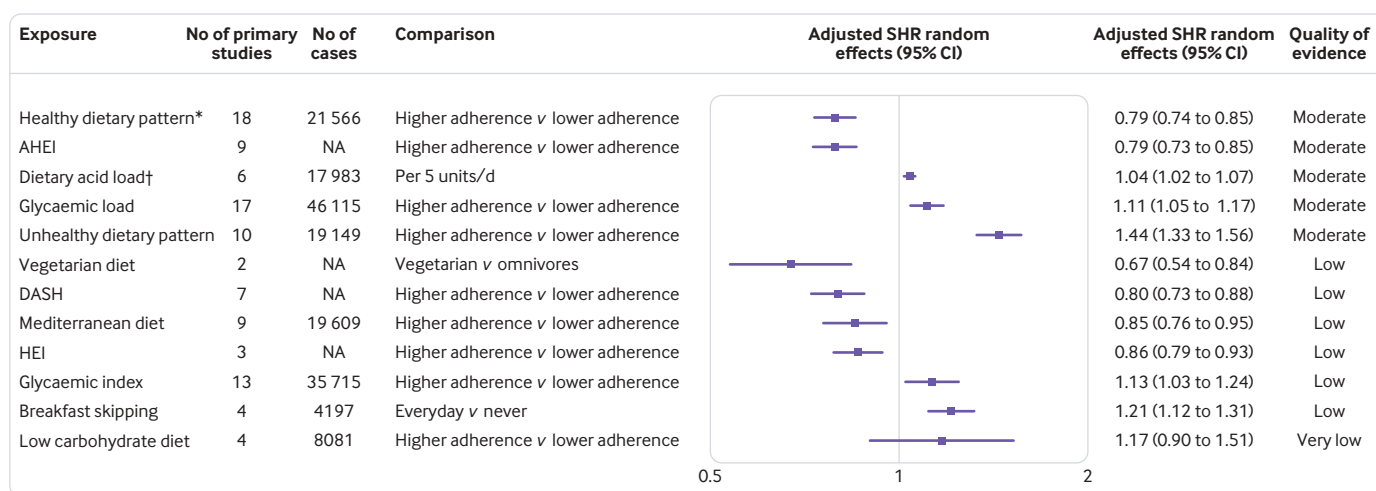


Fig 1 | Adjusted summary hazard ratios (SHR) with 95% confidence intervals and quality of evidence for association between dietary behaviours or diet quality indices and incidence of type 2 diabetes. Data are based on results from 53 published meta-analyses selected for umbrella review. AHEI=alternative healthy eating index; DASH=dietary approach to stop hypertension; HEI=healthy eating index; NA=not available. Cases refer to individuals with type 2 diabetes. \*Includes Mediterranean diet, DASH, AHEI, and healthy dietary patterns derived from principal component analysis. †Summary hazard ratio extracted from published meta-analysis, no reanalysis possible

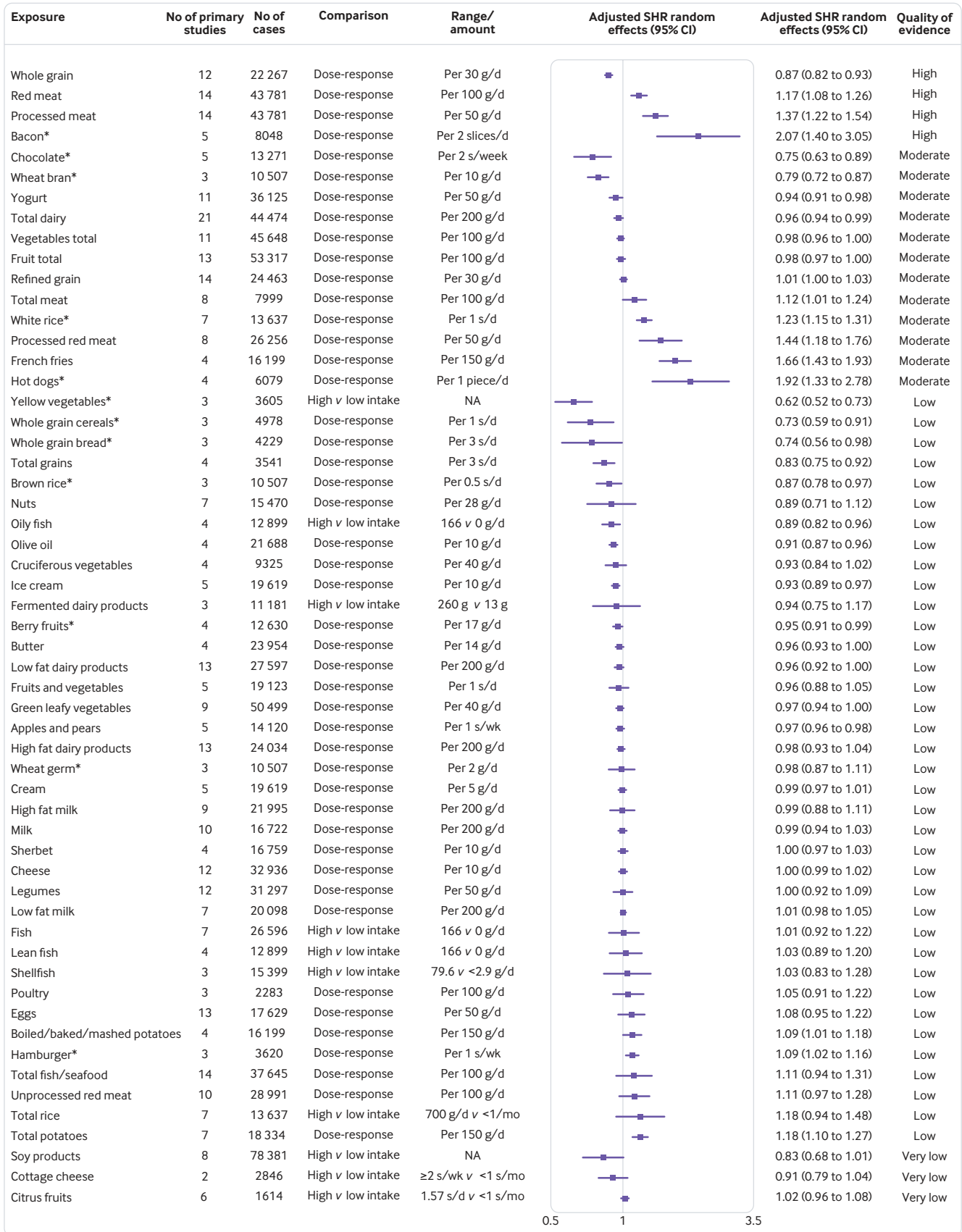
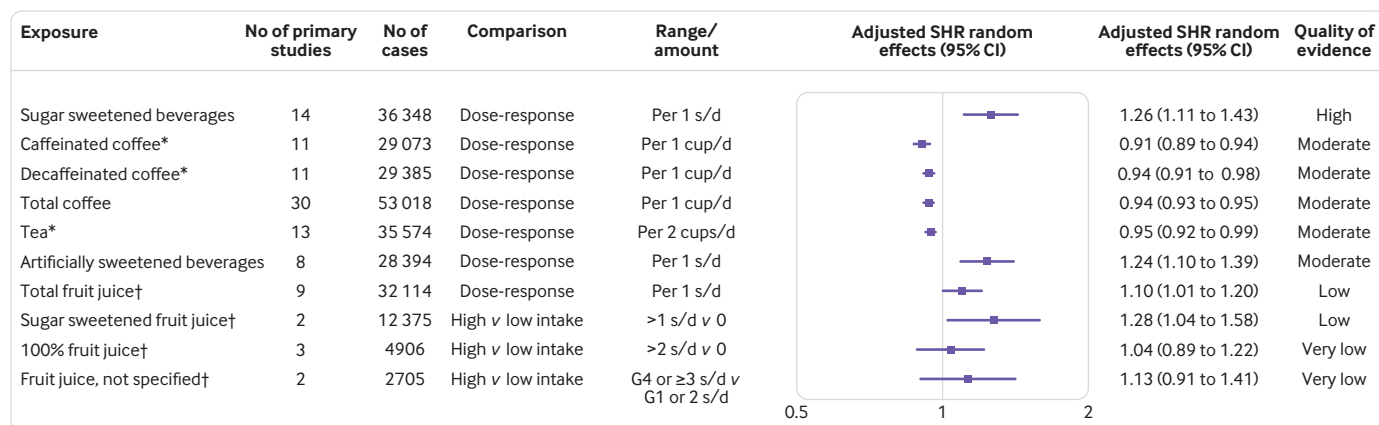


Fig 2 | Adjusted summary hazard ratios (SHR) with 95% confidence intervals and quality of evidence for association between food groups and foods and incidence of type 2 diabetes. Data are based on results from 53 published meta-analyses selected for umbrella review. S=serving; NA=not available. \*Summary hazard ratio extracted from published meta-analysis, no reanalysis possible

BMJ: first published as 10.1136/bmj.l2368 on 3 July 2019. Downloaded from <http://www.bmj.com/> on 18 April 2024 by guest. Protected by copyright.

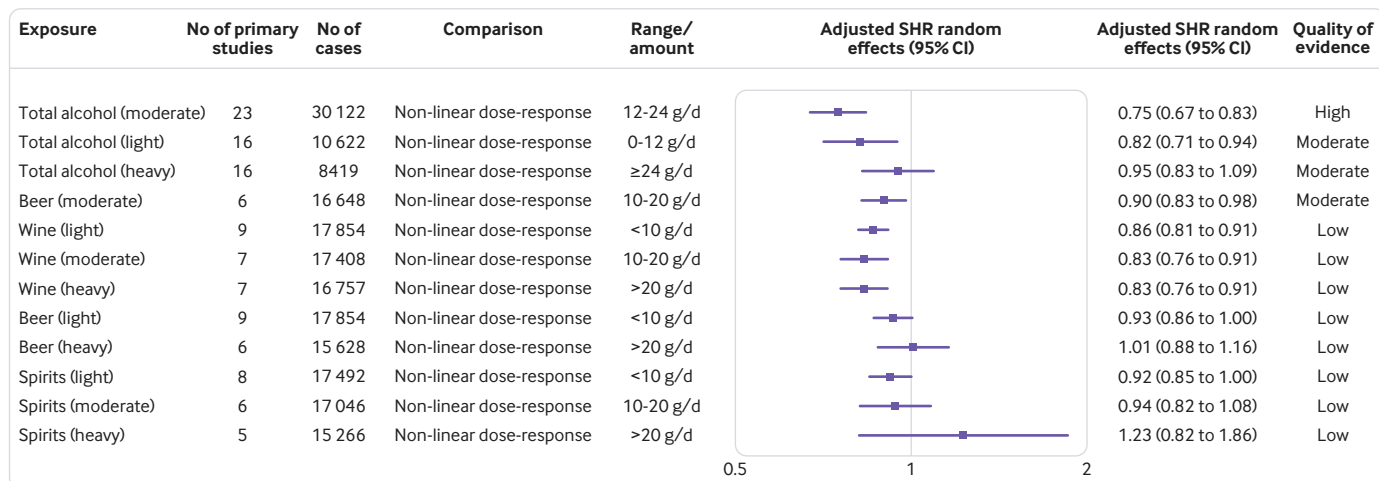


**Fig 3 | Adjusted summary hazard ratios (SHR) with 95% confidence intervals and quality of evidence for association between beverages and incidence of type 2 diabetes.** Data are based on results from 53 published meta-analyses selected for umbrella review. \*Summary hazard ratio extracted from published meta-analysis, no re-analysis possible. †Total fruit juice=fruit juices with added sugar and without added sugar; 100% fruit juice=fruit juice without added sugar; sugar sweetened fruit juice=fruit juice with added sugar; fruit juice, not specified=type of fruit juice (with or without added sugar) was not specified in these studies; s=-serving; G=group (based on the range divided by quintiles)

of red meat (for an increment of 100 g/day, 1.17 (1.08 to 1.26)), processed meat (for an increment of 50 g/day, 1.37 (1.22 to 1.54)), and bacon (per two slices/day, 2.07 (1.40 to 3.05)), from evidence rated as high quality. The inverse association between chocolate, wheat bran, yogurt, and total dairy and the incidence of type 2 diabetes for dose-response meta-analyses were rated with moderate quality of evidence. The association between increased incidence of the disease and total meat, white rice, processed red meat, french fries, and hot dogs for dose-response meta-analyses were also found from evidence rated as moderate quality.

We observed no clear association with moderate quality of evidence between total vegetables, total fruit, and refined grain and the incidence of type 2 diabetes. Low quality of evidence was found between yellow vegetables and oily fish and incidence of type 2 diabetes (comparing high v low intakes).

Furthermore, low quality evidence was found for dose-response meta-analyses of whole grain cereals, whole grain bread, total grains, brown rice, olive oil, ice cream, berry fruits, and apples and pears, which were associated with decreased incidence of the disease. Low quality evidence was also found for dose-response meta-analyses of boiled/baked/mashed potatoes, hamburgers, and total potatoes, which were associated with increased incidence. No clear association with low to very low quality of evidence was shown for the association for incidence of type 2 diabetes with nuts, cruciferous vegetables, fermented dairy products, butter, low fat dairy products, fruits and vegetables, green leafy vegetables, high fat dairy products, wheat germ, cream, high fat milk, milk, sherbet, cheese, legumes, low fat milk, fish, lean fish, shellfish, poultry, eggs, total fish or seafood, unprocessed red meat, rice, soy products, cottage cheese, and citrus fruits.



**Fig 4 | Adjusted summary hazard ratios (SHR) with 95% confidence intervals and quality of evidence for association between total alcohol and alcoholic beverages and incidence of type 2 diabetes.** Data are based on results from 53 published meta-analyses selected for umbrella review

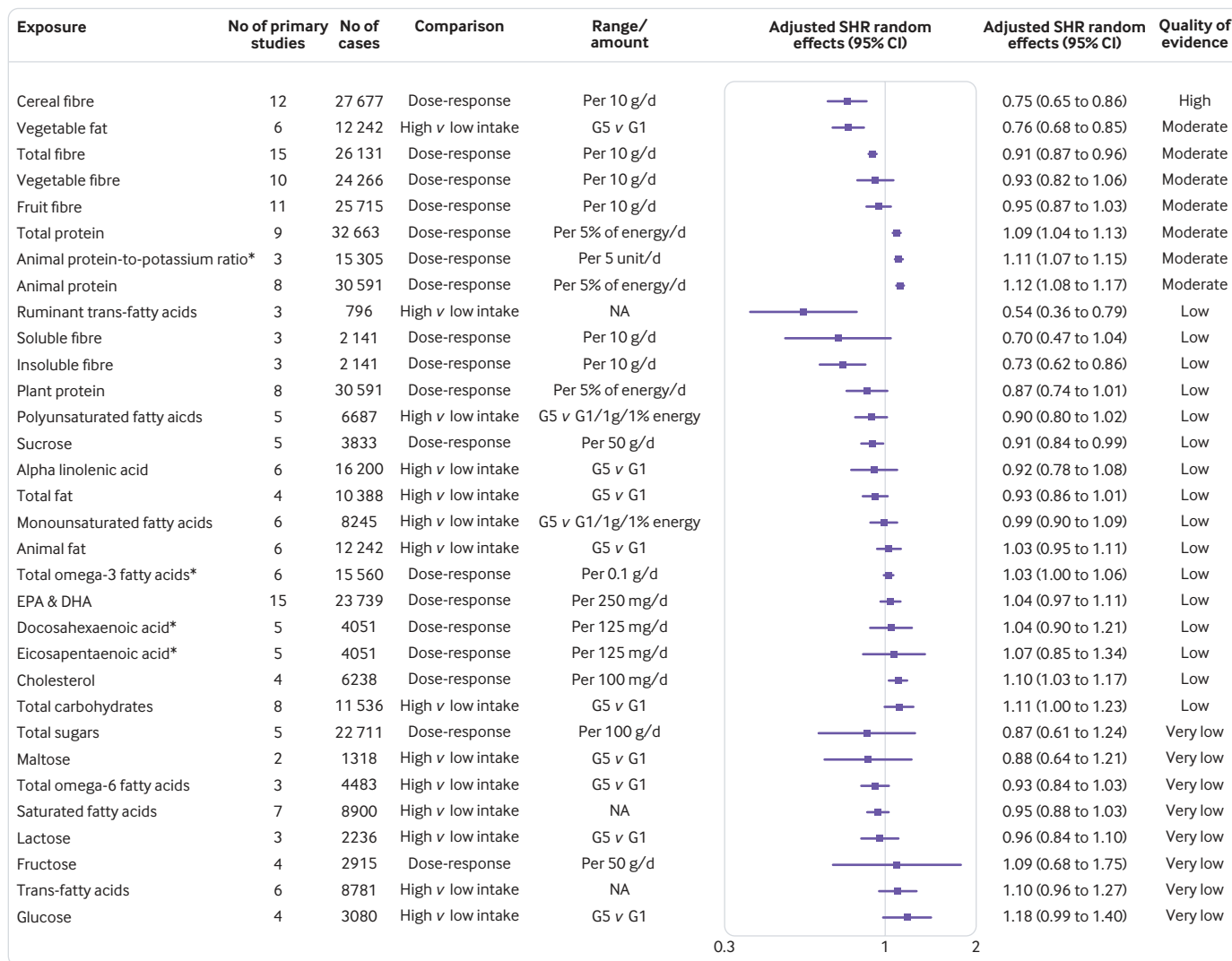


Fig 5 | Adjusted summary hazard ratios (SHR) with 95% confidence intervals and quality of evidence for association between macronutrients and incidence of type 2 diabetes. Data are based on results from 53 published meta-analyses selected for umbrella review. \*Summary hazard ratio extracted from published meta-analysis, no re-analysis possible. EPA=eicosapentaenoic acid, DHA=docosahexaenoic acid, G=group (based on the range divided by quintiles); NA=not available

For beverages, quality of evidence was high for an increased incidence of type 2 diabetes with higher intake of sugar sweetened beverages (for an increase of one serving/day, adjusted summary hazard ratio 1.26 (95% confidence interval 1.11 to 1.43); fig 3). The inverse association in dose-response meta-analyses between caffeinated coffee, decaffeinated coffee, and total coffee and the incidence of type 2 diabetes, as well as the increased incidence of type 2 diabetes with higher intake of artificially sweetened beverages in dose-response meta-analyses, were rated with moderate quality of evidence. Total fruit juice and sugar sweetened fruit juice were associated with an increased incidence of type 2 diabetes with low quality of evidence in dose-response meta-analyses and in meta-analyses comparing high versus low intake, respectively. No clear associations were found for 100% fruit juice and unspecified fruit juice, and rated with very low quality of evidence.

### Alcoholic beverages

Figure 4 shows the adjusted summary hazard ratios with their corresponding 95% confidence intervals and the quality of evidence for the associations between alcoholic beverages and incidence of type 2 diabetes. Moderate intake of total alcohol was inversely associated with incidence of the disease with high quality of evidence (for 12-24 g/day v no alcohol consumption, adjusted summary hazard ratio 0.75 (95% confidence interval 0.67 to 0.83)). The associations between light intake of total alcohol and moderate consumption of beer and increased incidence of type 2 diabetes were rated with moderate quality of evidence. We saw no clear association between heavy intake of total alcohol and incidence of the disease, with moderate quality of evidence. Low quality of evidence was found for the inverse association of any intake of wine with incidence of type 2 diabetes; and for no clear association of light and heavy beer



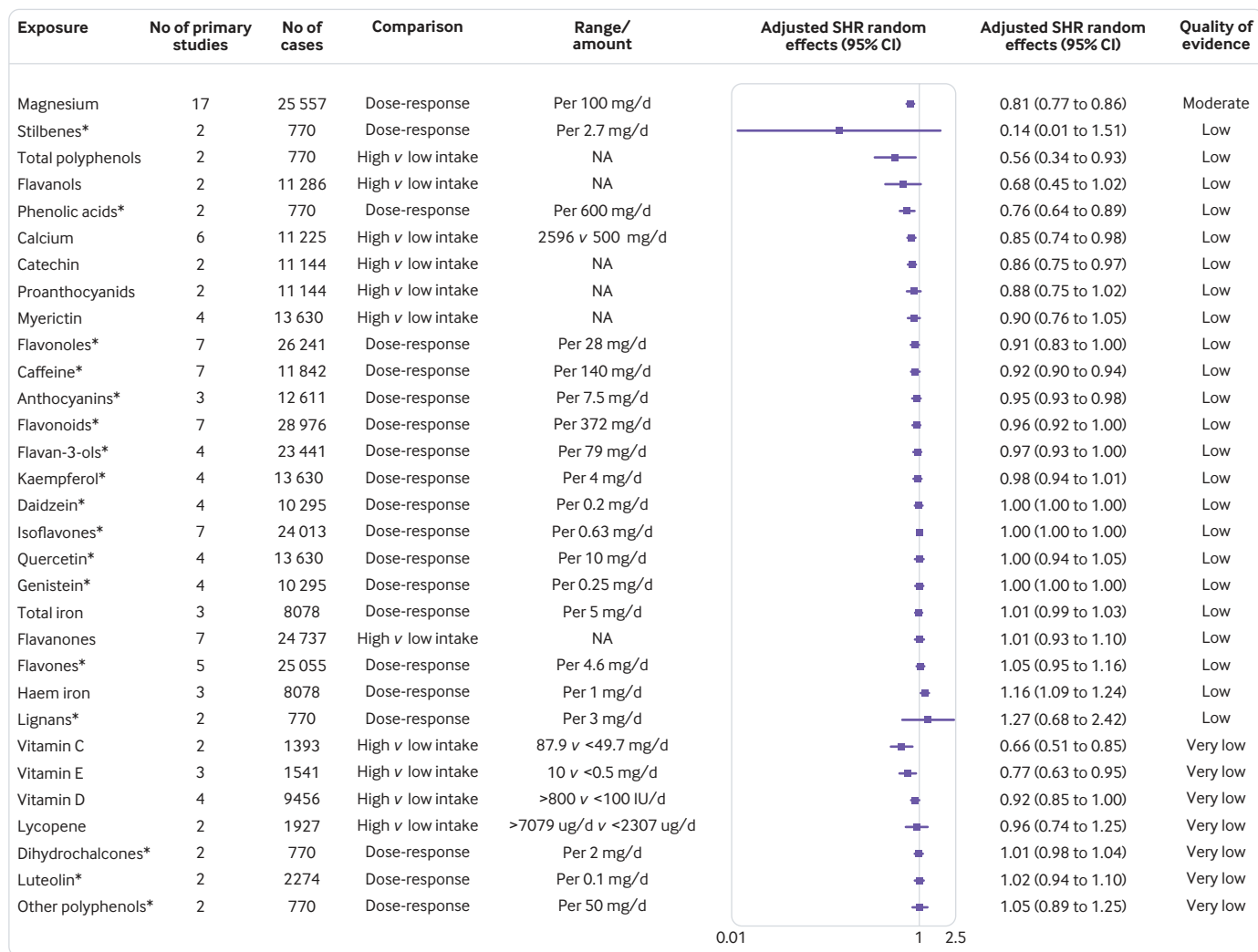


Fig 6 | Adjusted summary hazard ratios (SHR) with 95% confidence intervals and quality of evidence for association between micronutrients and incidence of type 2 diabetes. Data are based on results from 53 published meta-analyses selected for umbrella review. \*Summary hazard ratio extracted from published meta-analysis, no reanalysis possible. IU=international units; NA=not available

intake, and of any intake of spirits with type 2 diabetes incidence.

#### Macronutrients and micronutrients

Figure 5 shows the adjusted summary hazard ratios with their corresponding 95% confidence intervals and the quality of evidence for the associations between macronutrients and the incidence of type 2 diabetes. The inverse association between cereal fibre and incidence of the disorder (for an increment of 10 g/day, adjusted summary hazard ratio 0.75 (95% confidence interval 0.65 to 0.86)) was rated with high quality of evidence. Moderate quality of evidence was found for vegetable fat and total fibre, which were associated with a decreased incidence of type 2 diabetes in meta-analyses comparing high versus low intake and in dose-response meta-analyses, respectively; and for total protein, animal protein-to-potassium ratio, and animal protein, which showed an association with increased incidence of disease. Low quality evidence was found for an inverse association between

incidence of type 2 diabetes for ruminant trans-fatty acids in meta-analyses comparing high versus low intake, and insoluble fibre and sucrose in dose-response meta-analyses, as well as for cholesterol, which was associated with increased incidence of the disease. No clear association (with low to very quality of evidence) was shown for soluble fibre, plant protein, polyunsaturated fatty acids, alpha linolenic acid, total fat, monounsaturated fatty acids, animal fat, total omega-3 fatty acids, eicosapentaenoic acid and docosahexaenoic acid (alone and in combination), total carbohydrates, total sugars, maltose, total omega-6 fatty acids, saturated fat, lactose, fructose, trans-fatty acids, and glucose.

For the micronutrients (fig 6), no association was rated with high quality of evidence. Moderate quality of evidence was observed for the inverse association between magnesium intake and incidence of type 2 diabetes in dose-response meta-analyses. Total polyphenols, calcium, and catechin were associated with decreased incidence of type 2 diabetes in meta-

analysis comparing high versus low intake. In dose-response meta-analyses, phenolic acids, caffeine, and anthocyanins were also associated with decreased incidence of type 2 diabetes, but these associations were rated with low quality of evidence. Evidence on the association of haem iron with increased incidence of the disease was also of low quality. No clear association (with low to very low quality of evidence) was found for stilbenes, flavanols, proanthocyanidins, myricetin, flavonols, flavanoids, flavan-3-ols, kaempferol, daidzein, isoflavones, quercetin, genistein, total iron, flavanones, flavones and lignans, vitamin D, lycopene, dihydrochalcones, luteolin, and other polyphenols. Vitamins C and E were inversely associated with incidence of type 2 diabetes but with very low quality of evidence.

#### Heterogeneity between primary studies

$I^2$ ,  $\tau^2$ , and 95% prediction intervals are reported in supplementary table 3. For 24% (n=36) and 29% (n=44) of the meta-analyses,  $\tau^2$  and the 95% prediction intervals could not be recalculated, respectively. As for the 95% prediction intervals, only 5% (n=8) of the meta-analyses excluded the null value—that is, high versus low adherence meta-analyses of healthy dietary patterns, unhealthy dietary patterns, and breakfast skipping and the dose-response meta-analyses of apples and pears, total coffee, artificially sweetened beverages, any wine intake, and magnesium. This result indicates that in future studies, the true effect size on these exposures is expected to point to the same direction. However, for most of the findings, the true effect size of future studies could be null or small in some populations.

#### Publication bias and small study effects

Our results indicated the presence of small study effects (potential publication bias) according to Egger's test ( $P<0.10$ ) for rice, soy products, monounsaturated fatty acids, total carbohydrates, vitamin D, and flavanones in meta-analyses comparing high versus low intake. The presence of these effects were also indicated for total dairy, low fat milk, total coffee, beer (light consumption), and cereal fibre from dose-response meta-analyses (supplementary table 3).

More than 10 primary studies were available for 20% (n=30) of the funnel plots, between five and 10 were available for 40% (n=61), and fewer than five were available for 40% (n=62). The funnel plots (supplementary figures 2-19) indicated small study effects for eight associations, including the dose-response relation between incidence for type 2 diabetes and low fat dairy (supplementary figure 3b), ice cream (supplementary figure 3l), and wine (light consumption; supplementary figure 13d); and the high versus low adherence meta-analyses of AHEI (supplementary figure 2d), DASH (supplementary figure 2e), breakfast skipping (supplementary figure 2i), soy products (supplementary figure 9e), and vitamin D (supplementary figure 18a).

## Discussion

### Principal findings

The influence of dietary behaviours or diet quality indices, food groups, foods, beverages, alcoholic beverages, macronutrients, and micronutrients on the incidence of type 2 diabetes has been examined in many published meta-analyses. In this umbrella review, we provided a broad overview of the existing evidence and evaluated the methodological quality of the meta-analyses and quality of evidence for all these associations.

We included 53 published meta-analyses, which comprised 153 adjusted summary hazard ratios for different dietary factors and incidence of type 2 diabetes. The methodological quality was high for most of the published meta-analyses. The quality of evidence was graded as high only for whole grain, cereal fibre, and moderate consumption of total alcohol, which decreased the incidence for type 2 diabetes; and for red meat, processed meat, bacon, and sugar sweetened beverages, which increased the incidence for the disease. For the other associations, the quality of evidence was moderate, low, or very low, which might be explained by the high proportion of meta-analyses that included fewer than five studies, had high heterogeneity, or had moderate effect sizes.

### Comparison with other studies

Our umbrella review supports existing guidelines, and adds evidence in several aspects. Recommendations for higher intake of whole grain products, high fibre intake, and avoiding products with a high glycaemic index are included in the guidelines and reviews.<sup>6 7 83 84 85</sup> This information accords with our results that higher intake of whole grain products and total fibre intake was associated with a decreased incidence of type 2 diabetes, for which we found high and moderate quality of evidence, respectively. Although intake of foods with a high glycaemic index was associated with an increased incidence of type 2 diabetes in our umbrella review, quality of evidence was only low and further investigation is needed. Furthermore, the source of fibre seems to be important; we found high quality evidence that cereal fibre is associated with a decreased incidence of type 2 diabetes, while fruit fibre and vegetable fibre were not significantly associated with incidence of the disease.

Our findings confirm recommendations for higher intake of yogurt,<sup>84</sup> coffee,<sup>6 7 84</sup> tea<sup>7 84</sup> and vegetable fat,<sup>6</sup> and we observed a decreased incidence of type 2 diabetes with moderate quality of evidence for these associations. The American Diabetes Association recommends a higher intake of berry fruits,<sup>84</sup> for which we also found an inverse association with incidence of type 2 diabetes, but the quality of evidence was low, indicating that more studies are needed. Our results also confirmed the adverse association of red meat, processed meat products,<sup>7 84</sup> and sugar sweetened beverages<sup>7 84</sup> with incidence of type 2 diabetes, with a high quality of evidence. Moreover, we found high quality of evidence for an association between bacon,

a type of processed meat, with increased incidence of type 2 diabetes. Our overview also showed associations between dietary patterns and incidence of type 2 diabetes, which are consistent with the results for some of the individual nutrients, foods, and food groups.

However, our findings did not indicate a beneficial association of incidence of type 2 diabetes with higher intake of low fat dairy products,<sup>86</sup> fruit and vegetables,<sup>6 7 84</sup> green leafy vegetables,<sup>7</sup> nuts,<sup>6 7 84</sup> and single unsaturated fatty acids (eg, omega-3 fatty acids),<sup>6 84</sup> or an adverse association with saturated fatty acids<sup>7</sup> or trans-fatty acids.<sup>6</sup> Nevertheless, we observed a decreased disease incidence with high intake of vegetable fat and a decreased incidence with healthy dietary patterns, which were partly characterised by a high ratio of unsaturated fatty acids to saturated fatty acids.

Only one of the guidelines mentions alcohol in their recommendations, which states that there is evidence that moderate consumption of alcohol lowers incidence of type 2 diabetes.<sup>6</sup> We found high quality of evidence for an inverse association between moderate total alcohol consumption and incidence of type 2 diabetes. Although we also observed a reduced incidence of type 2 diabetes with moderate consumption of wine and beer, quality of evidence for these associations was low and moderate, respectively.

In a previous review, Ley and colleagues summarised findings from primary studies and meta-analyses on dietary patterns, food groups and foods, beverages, and macronutrients and micronutrients regarding incidence of type 2 diabetes. However, this report was not a systematic review but only a narrative review, and the authors did not evaluate the validity and quality of evidence of the included meta-analyses.<sup>83</sup> We came to similar conclusions, with some exceptions, concerning the beneficial association between omega-6 fatty acids and nuts and the incidence of type 2 diabetes.<sup>83</sup> In their review, Micha and colleagues found probable or convincing evidence for an association with incidence of type 2 diabetes for low consumption of nuts, whole grain, and dietary fibre, as well as high consumption of unprocessed red meat, processed red meat, and foods with a high glycaemic load.<sup>9</sup> These results mostly accord with our findings, apart from the beneficial association of nuts and the harmful association of unprocessed red meat with incidence of type 2 diabetes. Conflicts could be explained by the inclusion of different primary studies. While Micha and colleagues included a meta-analysis with both randomised controlled trials and observational studies, our report only focused on observational studies.<sup>87</sup> In addition, the Micha meta-analysis missed one primary study that reported an increased incidence of type 2 diabetes with higher intake of nut intake,<sup>88</sup> which resulted in a decreased but not statistically significant summary estimate in our report.

In their umbrella review, Bellou and colleagues summarised findings from meta-analyses on the association between different risk factors (including selected dietary factors) and incidence of type 2

diabetes. However, they conducted their literature search up to February 2016,<sup>10</sup> and our umbrella review included more recent meta-analyses (eg, nuts, processed meat, red meat, whole grain). Furthermore, we included more exposures (153 v 53). While Bellou and colleagues also evaluated epidemiological credibility, they used a different tool for their evaluation.<sup>10</sup> Therefore, our results differed from their evaluation in several aspects (eg, for processed meat and red meat), but were similar in relation to whole grain and sugar sweetened beverages.

### Possible explanations

Individuals who have unhealthy dietary behaviours (such as low intake of whole grains and fibre and high intake of red and processed meat) are likely to have an unhealthier lifestyle, such as higher rates of obesity, smoking, and physical inactivity.<sup>89-91</sup> However, 87% of the primary studies included in the present review had adjusted for smoking and 86% for body mass index and for physical activity in multivariable regression models, and the associations persisted. Nevertheless, residual confounding cannot be ruled out, perhaps particularly in the analysis of artificially sweetened beverages, where obese individuals could have switched from sugar sweetened beverages to artificially sweetened beverages to lose weight. This behavioural change might explain the association observed before adjustment for body mass index and the attenuation of the association with body mass index adjustment.<sup>56</sup>

For both whole grain and cereal fibre, high quality of evidence indicated an inverse association with incidence of type 2 diabetes. This beneficial effect could be partly explained by their high content in phytochemicals, vitamins, and minerals, which are lost in the production process of refining grains.<sup>44 65 92 93</sup> High intake of whole grain and cereal fibre has been associated with greater insulin sensitivity, lower fasting insulin concentrations,<sup>93-95</sup> and lower concentrations of inflammatory markers such as C reactive protein,<sup>96-100</sup> which could increase incidence for type 2 diabetes<sup>101</sup>; and higher concentrations of the cytokine adiponectin, which is associated with a reduced incidence.<sup>101 102</sup>

A recent meta-analysis of randomised controlled trials showed acute beneficial effects for an intervention with increased whole grain consumption compared with control meals (including mainly white wheat bread) on postprandial glucose and insulin response,<sup>103</sup> which reduces pancreas exhaustion.<sup>104 105</sup> However, in medium and long term randomised controlled trials, the intervention of increased whole grain consumption had no effect on fasting glucose, fasting insulin, and insulin resistance compared with the control diet. Nevertheless, when randomised controlled trials with people at increased risk for type 2 diabetes were excluded, fasting glucose was lower in the intervention group than in the control group.<sup>103</sup> High intake of whole grains has been associated with reduced weight gain over time.<sup>106</sup> In a previous meta-analysis, adjustment for body mass index attenuated

the association between whole grain intake and type 2 diabetes risk by 33-50%,<sup>44</sup> suggesting that reduced adiposity might be an important mechanism by which whole grain consumption reduces type 2 diabetes risk. Therefore, randomised controlled trials<sup>103</sup> could have found weak effects of whole grain intake and intermediate risk factors, because the trials could have been too short to observe an effect of whole grain intake on weight loss.

High quality of evidence was also observed for the positive association between incidence of type 2 diabetes and red meat, processed meat, and bacon. In a pooled analysis of 14 studies, the consumption of processed meat and unprocessed red meat was associated with higher fasting glucose and fasting insulin levels,<sup>107</sup> and some studies<sup>96 108 109</sup> but not all<sup>107</sup> have reported similar results as well as associations with C reactive protein, ferritin, glycated haemoglobin, and gamma-glutamyl transferase.<sup>96 109</sup> In some of these studies, associations were attenuated when adjusted for body mass index,<sup>96 108 109</sup> which is consistent with the much stronger associations reported between type 2 diabetes and intake of unprocessed and processed red meat in analyses unadjusted for body mass index than when adjusted for body mass index.<sup>39 110 111</sup> Given that both unprocessed and processed red meat has been associated with weight gain over time,<sup>106 112</sup> increased weight gain could be an important mechanism by which meat intake increases incidence of type 2 diabetes. Although the association with unprocessed red meat was not statistically significant in a meta-analysis from 2013<sup>36</sup>, this finding needs to be interpreted with caution. Of cohort studies that have since been published,<sup>113-118</sup> most with the larger cohorts found an increased risk also with unprocessed red meat.<sup>113-116</sup> Processed meat contains high amounts of sodium that could cause microvascular dysfunction and increase incidence of type 2 diabetes.<sup>119 120 121</sup> Processed meat also contains nitrates, nitrites, and their by-products (eg, peroxynitrite), which could have a role in the pathogenesis of type 2 diabetes.<sup>122</sup> Another possible explanation is the high content of haem iron in meat and meat products, which has been shown to be associated with an increased incidence of type 2 diabetes.<sup>68</sup> Iron has strong pro-oxidative capacities, which might damage pancreatic cells.<sup>123</sup> Furthermore, meat contains high amounts of advanced glycation end products,<sup>124</sup> which can be absorbed into the body and have been shown to increase inflammatory markers.<sup>125 126</sup>

Additionally, we found high quality evidence for an increased incidence of type 2 diabetes with sugar sweetened beverages. Although these beverages are a major risk factor for weight gain and obesity,<sup>127</sup> other mechanisms other than the influence of overweight and obesity on incidence of type 2 diabetes are physiologically plausible. Sugar sweetened beverages, such as sugar containing lemonades, can have a high glycaemic index,<sup>128</sup> which is related to an increase in blood sugar levels and associated with increased incidence of type 2 diabetes.<sup>104 105</sup> However, beverages

that are high in fructose or isomaltulose, a slowly absorbable disaccharide used in sports drinks, have a lower glycaemic index.<sup>129</sup> A randomised controlled trial compared two intervention groups consuming 20% of their energy requirement in form of beverages sweetened with isomaltulose (low glycaemic index) and maltodextrin (high glycaemic index). The insulin response was lower and insulin sensitivity was better preserved in the group consuming beverages with a low glycaemic index than in the group consuming beverages with a high glycaemic index.<sup>129</sup> However, fructose that might be contained in these beverages increases hepatic lipogenesis and insulin resistance.<sup>130</sup> Another randomised controlled trial compared interventions of four servings/day of sugar sweetened, fructose sweetened, and aspartame sweetened beverages for eight days. Ad libitum energy intake was significantly increased in the sugar and fructose groups compared with the aspartame group, with no difference between the first two groups. However, since all groups received the same standard diet, the excess calories in the sugar sweetened and fructose sweetened beverages possibly contributed to the increased calorie intake in those groups.<sup>131</sup>

Nevertheless, high intake of sugar in liquid form seems to have a role in the association of sugar sweetened beverages with incidence of type 2 diabetes. Sugar containing liquids have been shown to negatively affect the regulation of hunger and satiety as opposed to sugar containing solid foods.<sup>132</sup> However, in our umbrella review, a surprising result was found for sucrose, which was associated with a decreased incidence of type 2 diabetes, based on evidence that was of moderate quality. The reason for this relation is not yet clear, although it might be because sweetened beverages are not the only source of sucrose. Sucrose is also a component of grains and dairy products, which are associated with a decreased incidence of type 2 diabetes.<sup>64</sup> Furthermore, the reason could lie in the influence of energy misreporting, as shown by Gottschald and colleagues.<sup>133</sup> The researchers found an inverse association between intake of high sucrose foods (cakes and cookies) and cardiometabolic disease risk factors in the European Prospective Investigation into Cancer and Nutrition (EPIC)-Potsdam study. However, the association diminished after the researchers adjusted for energy misreporting.<sup>133</sup>

We found high quality evidence for an inverse association between moderate alcohol consumption and incidence of type 2 diabetes. Results from observational studies suggested that light or moderate alcohol consumption increases insulin sensitivity.<sup>134-136</sup> However, a meta-analysis of randomised controlled trials comparing moderate alcohol consumption (including wine, beer, and spirits) with no alcohol consumption only confirmed this result for women. No effect on insulin sensitivity was found for men. Nevertheless, moderate alcohol intake decreased fasting insulin concentrations and glycated haemoglobin.<sup>137</sup> The sex specific effect was also confirmed by the meta-analysis by Li and colleagues.



which showed a stronger inverse association with incidence of type 2 diabetes for women than for men, although both associations were statistically significant.<sup>74</sup> Results from a randomised controlled trial comparing the effect of red wine, dealcoholised red wine, and gin on glucose homeostasis suggested that the non-alcoholic fraction of red wine (mainly the polyphenols) contributes to possible beneficial effects of red wine on plasma insulin and the homeostatic model assessment for insulin resistance.<sup>138</sup> This possible effect is supported by our findings that especially wine was inversely associated with incidence of type 2 diabetes. However, alcohol causes adverse health effects such as liver cirrhosis, which increases incidence of type 2 diabetes.<sup>139</sup> Given the U shaped association of total alcohol and alcoholic beverages with incidence of the disease, the risk for alcohol abuse, and other adverse health effects of alcohol (eg, increased risk for certain types of cancer),<sup>140</sup> translation of these results into recommendations have to be considered carefully.

In terms of internal consistency, we observed that related exposures showed the same direction of the association with incidence of type 2 diabetes. For example, a healthy dietary pattern (characterised, amongst others, by a high intake of whole grain products and low intake of red and processed meat) and high consumption of whole grain products, fibre, and magnesium were all associated with a reduced incidence of the disease. Accordingly, an unhealthy dietary pattern and high consumption of red meat, processed meat (eg, bacon), animal protein, and haem iron were related to an increased disease incidence. However, as explained above, the role of unprocessed red meat regarding incidence of type 2 diabetes needs further investigation.

The results on caffeinated and decaffeinated coffee and caffeine warrant further discussion. Both caffeinated and decaffeinated coffee were associated with a decreased incidence of type 2 diabetes, suggesting that caffeine does not have a major role in the health effect of coffee on the disease. Nevertheless, caffeine was also observed to decrease type 2 diabetes incidence. All associations were graded as moderate quality of evidence. Although caffeine has been discussed to have beneficial properties (eg, increase insulin sensitivity<sup>141</sup>), the results are difficult to interpret because of the strong correlation with coffee consumption.<sup>55</sup> Therefore, caffeine might act as a marker for coffee intake, which contains several beneficial compounds (eg, chlorogenic acid and antioxidants) that contribute to the reduction of type 2 diabetes incidence.<sup>55</sup> Since decaffeinated coffee showed a similar association with incidence of type 2 diabetes as caffeinated coffee, it seems plausible that these other bioactive compounds in coffee mainly contribute to the reduction of type 2 diabetes incidence with coffee consumption.

In general, diet is a complex combination of foods and nutrients that act synergistically.<sup>142</sup> In this umbrella review, dietary patterns were all associated

with the incidence of type 2 diabetes, but the quality of evidence for dietary patterns was moderate. To account for the full spectrum of the association between diet and the disease, future studies could investigate a dietary score, including all important aspects of a healthy diet that have been identified to have a role in the risk of type 2 diabetes. This approach might be more predictive of disease risk than the investigation of single foods and nutrients.<sup>142</sup> For example, a strong reduced risk of the disease (reduction by 52%, 95% confidence interval 14% to 73%) was identified for the adherence to the Mediterranean diet (supplemented with either extra virgin olive oil or mixed nuts) compared with a control diet (advice to reduce only dietary fat) in the PREDIMED trial.<sup>143</sup> Thus, to give accurate recommendations regarding diabetes prevention, it is important to identify the optimal diet(s).

### Strengths and limitations

Our umbrella review had several strengths. It provides a systematic, comprehensive overview of the evidence from all published meta-analyses regarding the role of dietary factors in the prevention of type 2 diabetes. We also evaluated the methodological quality and quality of evidence by using validated tools.<sup>13-15 17</sup> In this context, most of the included meta-analyses were of high methodological quality. Furthermore, internal inconsistencies were uncovered and relevant research directions could therefore be identified.

This umbrella review also had several limitations. For 36 of the 96 dose-response meta-analyses, recalculation was not possible, because no single effect estimates were reported. But authors stated that the dose-response associations were estimated by random effects meta-analyses.<sup>31 35 37 38 44 48 53 54 60 61 72</sup> However, we could not calculate  $\tau^2$  and 95% prediction intervals for these associations because of missing values. We also resumed the doses defined in the published meta-analyses; therefore, they are not standardised and the doses have to be considered when interpreting the results. For example, the serving sizes defined for total sugars, sucrose, and fructose were large and the summary risk estimate might be smaller with a smaller serving size. Additionally, information on linearity (eg, P for non-linearity) of the dose-response relations were available for 72% of the dose-response meta-analyses. A third of these dose-response relations indicated non-linearity. To derive recommendations, further investigation is needed to set optimal cutoff points. Furthermore, to ensure comparability with previous meta-analyses, we used the random effects approach by DerSimonian and Laird<sup>18</sup> for the calculation of the adjusted summary hazard ratios and their corresponding 95% confidence intervals. However, future meta-analyses should use the Hartung-Knapp approach, which gives a better reflection of the uncertainty in the variance between studies, expressed by wider confidence intervals.<sup>144</sup>

The included primary studies were based on an observational prospective study design, which is

prone to biases such as confounding. Nevertheless, the most important confounders were adjusted for in most of the primary studies (90% for age and sex, 87% for smoking, and 86% for body mass index and for physical activity). However, residual confounding cannot be completely ruled out. For example, only 52% of the studies adjusted for family history of diabetes, which should be included in the adjustment model of future studies. Additionally, only 49% of the primary studies that used Cox proportional hazard regression evaluated the proportional hazard assumption and found no violation, while the other 51% provided no information about the evaluation of the assumption. Thus, it remained unclear whether the assumption was fulfilled or violated in those studies. Future studies should report on the evaluation of the assumption of the according statistical method. As the included primary studies were prospective studies, risk of recall bias was avoided and selection bias was reduced. Randomised controlled trials, which reduce risk of biases such as confounding, are scarce in research on diet-disease associations because large sample size trials with long follow-up periods are expensive to conduct,<sup>6</sup> and long term adherence can be a challenge in trials of major dietary changes.

We did not explore subgroup analysis (eg, by sex, geographical locations, or adjustment factors such as body mass index) or sensitivity analysis (eg, exclusion of studies at high risk of bias). For example, regarding total omega-3 fatty acids and incidence of type 2 diabetes, differences between US, Australian/Asian, and European populations have been shown, with an increased incidence of type 2 diabetes in US populations, no association for European countries, and an inverse association in Asian/Australian populations.<sup>145</sup> Additionally, body mass index could be an influencing factor in the association between nut intake and incidence of type 2 diabetes, with an inverse association before and a null association after adjustment for body mass index. In a subgroup analysis, a reduced incidence of type 2 diabetes was observed for participants with body mass index of at least 25, and no association for those with a body mass index of less than 25.<sup>146</sup>

Although publication bias was indicated for only 7% of the meta-analyses according to the Egger's test and for only 5% according to the funnel plots, 40% included five to 10 studies and 40% included even fewer than five studies, which indicates that the results are not reliable.<sup>17</sup> Since some of the meta-analyses included only a few primary studies, some data are missing (for example, unpublished null associations). Thus, more research is needed to investigate these associations, which were based on small numbers of included studies.

Furthermore, primary studies that were not included in any published meta-analyses might have been missing, and additional studies could have come out after publication of each meta-analysis and could have influenced the results. We did not include pooled analyses in our umbrella meta-analyses and it was also

beyond the scope of this umbrella review to include exposures of biomarkers. However, the measurement of certain exposures (eg, fatty acids) could lead to bias,<sup>60</sup> and more specific information on long term intake might be obtained from biomarkers.<sup>147 148</sup>

Dietary changes over time were also not assessed in this umbrella review. Only two of the included meta-analyses repeated measures of dietary intake diet. One meta-analysis on sugar sweetened beverages, artificially sweetened beverages, and total fruit juice showed that the association with increased incidence of type 2 diabetes was diminished for total fruit juice when diet was measured repeatedly.<sup>56</sup> Another meta-analysis found stronger associations between red and processed meat intake and type 2 diabetes incidence in subgroups of studies that used repeated dietary assessments compared with only baseline dietary assessments.<sup>37</sup> In the three Harvard cohorts, associations between red and processed meat and incidence of type 2 diabetes were stronger after repeated dietary assessments than after only baseline dietary intake.<sup>39</sup> Increases and reductions in red and processed meat intake over time were also found to be associated with subsequent increases and decreases in the incidence of type 2 diabetes, respectively.<sup>149</sup>

In the NutriGrade tool, all criteria contribute to the overall score with one point, except for bias, study quality, study limitations, and effect size, which contribute with two points and therefore receive more weight. However, bias, study quality, and study limitations include several aspects that might justify a higher weight (eg, exposure, outcome, and confounding). Although NutriGrade is a validated tool, the use of other tools (eg, GRADE<sup>150</sup>) could have led to different conclusions regarding the quality of the evidence.

Finally, we systematically chose the meta-analysis including the largest number of primary studies for each exposure. Therefore, the chosen meta-analysis might not have had the highest quality of evidence. However, the meta-analysis with the largest number of primary studies was mostly based on the same primary studies as meta-analyses including fewer studies, with an update of one or more studies. Additionally, in our umbrella review, one of the main reasons for a low quality of evidence was due to the small number of primary studies included in the meta-analyses. Therefore, it is unlikely that inclusion of a meta-analysis with even fewer primary studies would have achieved a higher quality of evidence compared with the meta-analysis included in our umbrella review.

### Conclusions and future research outlook

The association of dietary behaviours or diet quality indices, food groups, foods, beverages, macronutrients, and micronutrients with incidence of type 2 diabetes has been examined in many published meta-analyses. Evidence indicates that dietary factors have an important role in the primary prevention of the disease. Although the methodological quality of the included meta-analyses was mostly high, the quality of

evidence was only high for associations for incidence of type 2 diabetes with whole grains, cereal fibre, moderate alcohol consumption, red meat, processed meat, bacon, and sugar sweetened beverages.

To achieve high quality of evidence for these associations and be able to give strong recommendations, future studies should regard several aspects. Dietary data with high validity should be attained, by improving dietary measurement methods and by assessing and accounting for changes in dietary behaviour over time. Studies should focus on exposures, which are biologically likely to be associated with incidence of type 2 diabetes, but for which quality of evidence is still low. Since recommendations are based on foods and food groups, studies should also focus on answering open questions in terms of internal inconsistencies, such as the role of unprocessed meat versus processed red meat in the association of total meat and red meat with disease incidence. More research is also needed on specific foods for which evidence is still low, such as types of rice (white rice, brown rice), fish (oily or lean fish), or fat (eg, olive oil). To take into account interactions between different foods and nutrients and the influence of mediating factors (eg, body mass index), future studies should also focus on dietary patterns, substitution analysis, mediation analysis, and network meta-analysis. Furthermore, to avoid selective publication bias, existing and future cohorts should publish data in comprehensive analyses, including data on dietary exposures that have not been investigated (or published) so far.

#### AUTHOR AFFILIATIONS

<sup>1</sup>Institute for Biometrics and Epidemiology, German Diabetes Centre, Leibniz Centre for Diabetes Research at Heinrich Heine University Düsseldorf, Auf'm Hennekamp 65, D-40225 Düsseldorf, Germany

<sup>2</sup>Institute for Clinical Diabetology, German Diabetes Centre, Leibniz Centre for Diabetes Research at Heinrich Heine University Düsseldorf, Düsseldorf, Germany

<sup>3</sup>German Centre for Diabetes Research, München-Neuherberg, Germany

<sup>4</sup>Department of Epidemiology and Biostatistics, Imperial College London, London, UK

<sup>5</sup>Department of Nutrition, Bjørknes University College, Oslo, Norway

<sup>6</sup>Department of Endocrinology, Morbid Obesity and Preventive Medicine, Oslo University Hospital, Oslo, Norway

<sup>7</sup>Institute for Evidence in Medicine, Faculty of Medicine and Medical Centre-University of Freiburg, Freiburg, Germany

<sup>8</sup>Department of Epidemiology, German Institute of Human Nutrition Potsdam-Rehbruecke, Nuthetal, Germany

We thank Oliver Kuss, director of the Institute for Biometrics and Epidemiology at the German Diabetes Centre, for his statistical advice and support.

**Contributors:** SS designed the research. MN and SS conducted the literature search and literature screening. MN and AB extracted the data. MN and SS analysed the data and wrote the first draft of the paper. All authors interpreted the data, read the manuscript, and approved the final version. MN and SS are guarantors. The corresponding author attests that all listed authors meet authorship criteria and that no others meeting the criteria were omitted.

**Funding:** The German Diabetes Centre is funded by the German Federal Ministry of Health and the Ministry of Innovation, Science, Research and Technology of the State North Rhine-Westphalia. This study was also supported in part by a grant from the German Federal Ministry of Education and Research to the German Centre for Diabetes

Research. The funding source has no role in the decisions about the data collection, analysis, interpretation of the data, preparation, review or approval of the manuscript.

**Competing interests:** All authors have completed the ICMJE uniform disclosure form at [www.icmje.org/doi\\_disclosure.pdf](http://www.icmje.org/doi_disclosure.pdf) and declare: support from the German Federal Ministry of Health, the Ministry of Innovation, Science, Research and Technology of the State North Rhine-Westphalia, and the German Federal Ministry of Education and Research to the German Centre for Diabetes Research for the submitted work; no financial relationships with any organisations that might have an interest in the submitted work in the previous three years; no other relationships or activities that could appear to have influenced the submitted work.

**Ethical approval:** Not required.

**Data sharing:** Data were extracted from published meta-analyses, all of which are available and accessible.

The lead authors affirm that the manuscript is an honest, accurate, and transparent account of the study being reported; that no important aspects of the study have been omitted; and that any discrepancies from the study as planned have been explained.

This is an Open Access article distributed in accordance with the Creative Commons Attribution Non Commercial (CC BY-NC 4.0) license, which permits others to distribute, remix, adapt, build upon this work non-commercially, and license their derivative works on different terms, provided the original work is properly cited and the use is non-commercial. See: <http://creativecommons.org/licenses/by-nc/4.0/>.

- International Diabetes Federation (IDF). *IDF Diabetes Atlas*. 8th ed. 2017.
- Jacobs E, Hoyer A, Brinks R, Icks A, Kuß O, Rathmann W. Healthcare costs of Type 2 diabetes in Germany. *Diabet Med* 2017;34:855-61. doi:10.1111/dme.13336
- World Health Organization (WHO). *Global report on diabetes*. World Health Organization, 2016.
- Zaccardi F, Webb DR, Yates T, Davies MJ. Pathophysiology of type 1 and type 2 diabetes mellitus: a 90-year perspective. *Postgrad Med J* 2016;92:63-9. doi:10.1136/postgradmedj-2015-133281
- American Diabetes Association. Evidence-based nutrition principles and recommendations for the treatment and prevention of diabetes and related complications. *Diabetes Care* 2002;25:202-12. doi:10.2337/diacare.25.1.202
- Paulweber B, Valensi P, Lindström J, et al. A European evidence-based guideline for the prevention of type 2 diabetes. *Horm Metab Res* 2010;42(Suppl 1):S3-36. doi:10.1055/s-0029-1240928
- Dyson PA, Twenefour D, Breen C, et al. Diabetes UK evidence-based nutrition guidelines for the prevention and management of diabetes. *Diabet Med* 2018;35:541-7. doi:10.1111/dme.13603
- Aromataris E, Fernandez R, Godfrey CM, Holly C, Khalil H, Tungpunkom P. Summarizing systematic reviews: methodological development, conduct and reporting of an umbrella review approach. *Int J Evid Based Healthc* 2015;13:132-40. doi:10.1097/XEB.0000000000000055
- Micha R, Shulkin ML, Peñalvo JL, et al. Etiologic effects and optimal intakes of foods and nutrients for risk of cardiovascular diseases and diabetes: Systematic reviews and meta-analyses from the Nutrition and Chronic Diseases Expert Group (NutriCoDE). *PLoS One* 2017;12:e0175149. doi:10.1371/journal.pone.0175149
- Bellou V, Belbasis L, Tzoulaki I, Evangelou E. Risk factors for type 2 diabetes mellitus: An exposure-wide umbrella review of meta-analyses. *PLoS One* 2018;13:e0194127. doi:10.1371/journal.pone.0194127
- Schwingshackl L, Hoffmann G, Lampousi AM, et al. Food groups and risk of type 2 diabetes mellitus: a systematic review and meta-analysis of prospective studies. *Eur J Epidemiol* 2017;32:363-75. doi:10.1007/s10654-017-0246-y
- Moher D, Liberati A, Tetzlaff J, Altman DG, PRISMA Group. Preferred reporting items for systematic reviews and meta-analyses: the PRISMA statement. *BMJ* 2009;339:b2535. doi:10.1136/bmj.b2535
- Shea BJ, Grimshaw JM, Wells GA, et al. Development of AMSTAR: a measurement tool to assess the methodological quality of systematic reviews. *BMC Med Res Methodol* 2007;7:10. doi:10.1186/1471-2288-7-10
- Shea BJ, Bouter LM, Peterson J, et al. External validation of a measurement tool to assess systematic reviews (AMSTAR). *PLoS One* 2007;2:e1350. doi:10.1371/journal.pone.0001350
- Shea BJ, Hamel C, Wells GA, et al. AMSTAR is a reliable and valid measurement tool to assess the methodological quality of systematic reviews. *J Clin Epidemiol* 2009;62:1013-20. doi:10.1016/j.jclinepi.2008.10.009
- Sharif MO, Janjua-Sharif FN, Ali H, Ahmed F. Systematic reviews explained: AMSTAR-how to tell the good from the bad and the ugly

- [correction in: *Oral Health Dent Manag* 2013;12:119]. *Oral Health Dent Manag* 2013;12:9-16.
- 17 Schwingshackl L, Knüppel S, Schwedhelm C, et al. Perspective: NutriGrade: a scoring system to assess and judge the meta-evidence of randomized controlled trials and cohort studies in nutrition research. *Adv Nutr* 2016;7:994-1004. doi:10.3945/an.116.013052
  - 18 DerSimonian R, Laird N. Meta-analysis in clinical trials. *Control Clin Trials* 1986;7:177-88. doi:10.1016/0197-2456(86)90046-2
  - 19 Higgins JP, Thompson SG, Deeks JJ, Altman DG. Measuring inconsistency in meta-analyses. *BMJ* 2003;327:557-60. doi:10.1136/bmj.327.7414.557
  - 20 Riley RD, Higgins JP, Deeks JJ. Interpretation of random effects meta-analyses. *BMJ* 2011;342:d549. doi:10.1136/bmj.d549
  - 21 Sterne JA, Sutton AJ, Ioannidis JP, et al. Recommendations for examining and interpreting funnel plot asymmetry in meta-analyses of randomised controlled trials. *BMJ* 2011;343:d4002. doi:10.1136/bmj.d4002
  - 22 Egger M, Davey Smith G, Schneider M, Minder C. Bias in meta-analysis detected by a simple, graphical test. *BMJ* 1997;315:629-34. doi:10.1136/bmj.315.7109.629
  - 23 Esposito K, Chiodini P, Maiorini MI, Bellastella G, Panagiotakos D, Giugliano D. Which diet for the prevention of type 2 diabetes? A meta-analysis of prospective cohort studies. *Endocrine* 2014;47:107-16.
  - 24 Alhazmi A, Stojanovski E, McEvoy M, Garg ML. The association between dietary patterns and type 2 diabetes: a systematic review and meta-analysis of cohort studies. *J Hum Nutr Diet* 2014;27:251-60. doi:10.1111/jhn.12139
  - 25 Schwingshackl L, Bogensberger B, Hoffmann G. Diet quality as assessed by the healthy eating index, alternate healthy eating index, dietary approaches to stop hypertension score, and health outcomes: an updated systematic review and meta-analysis of cohort studies. *J Acad Nutr Diet* 2018;118:74-100.e11. doi:10.1016/j.jand.2017.08.024
  - 26 Koloverou E, Esposito K, Giugliano D, Panagiotakos D. The effect of Mediterranean diet on the development of type 2 diabetes mellitus: a meta-analysis of 10 prospective studies and 136,846 participants. *Metabolism* 2014;63:903-11. doi:10.1016/j.metabol.2014.04.010
  - 27 Lee Y, Park K. Adherence to a vegetarian diet and diabetes risk: a systematic review and meta-analysis of observational studies. *Nutrients* 2017;9:E603. doi:10.3390/nu9060603
  - 28 Namazi N, Larijani B, Azadbakht L. Low-carbohydrate-diet score and its association with the risk of diabetes: a systematic review and meta-analysis of cohort studies. *Horm Metab Res* 2017;49:565-71. doi:10.1055/s-0043-112347
  - 29 Bi H, Gan Y, Yang C, Chen Y, Tong X, Lu Z. Breakfast skipping and the risk of type 2 diabetes: a meta-analysis of observational studies. *Public Health Nutr* 2015;18:3013-9. doi:10.1017/S1368980015000257
  - 30 Bhupathiraju SN, Tobias DK, Malik VS, et al. Glycemic index, glycemic load, and risk of type 2 diabetes: results from 3 large US cohorts and an updated meta-analysis. *Am J Clin Nutr* 2014;100:218-32. doi:10.3945/ajcn.113.079533
  - 31 Jayedi A, Shab-Bidar S. Dietary acid load and risk of type 2 diabetes: A systematic review and dose-response meta-analysis of prospective observational studies. *Clin Nutr ESPEN* 2018;23:10-8. doi:10.1016/j.clnesp.2017.12.005
  - 32 Gijsbers L, Ding EL, Malik VS, de Goede J, Geleijnse JM, Soedamah-Muthu SS. Consumption of dairy foods and diabetes incidence: a dose-response meta-analysis of observational studies. *Am J Clin Nutr* 2016;103:1111-24. doi:10.3945/ajcn.115.123216
  - 33 Aune D, Norat T, Romundstad P, Vatten LJ. Dairy products and the risk of type 2 diabetes: a systematic review and dose-response meta-analysis of cohort studies. *Am J Clin Nutr* 2013;98:1066-83. doi:10.3945/ajcn.113.059030
  - 34 Gao D, Ning N, Wang C, et al. Dairy products consumption and risk of type 2 diabetes: systematic review and dose-response meta-analysis. *PLoS One* 2013;8:e73965. doi:10.1371/journal.pone.0073965
  - 35 Yuan S, Li X, Jin Y, Lu J. Chocolate consumption and risk of coronary heart disease, stroke, and diabetes: a meta-analysis of prospective studies. *Nutrients* 2017;9:E688. doi:10.3390/nu9070688
  - 36 Feskens EJ, Sluik D, van Woudenberg GJ. Meat consumption, diabetes, and its complications. *Curr Diab Rep* 2013;13:298-306. doi:10.1007/s11892-013-0365-0
  - 37 Aune D, Ursin G, Veierød MB. Meat consumption and the risk of type 2 diabetes: a systematic review and meta-analysis of cohort studies. *Diabetologia* 2009;52:2277-87. doi:10.1007/s00125-009-1481-x
  - 38 Micha R, Wallace SK, Mozaffarian D. Red and processed meat consumption and risk of incident coronary heart disease, stroke, and diabetes mellitus: a systematic review and meta-analysis. *Circulation* 2010;121:2271-83. doi:10.1161/CIRCULATIONAHA.109.924977
  - 39 Pan A, Sun Q, Bernstein AM, et al. Red meat consumption and risk of type 2 diabetes: 3 cohorts of US adults and an updated meta-analysis. *Am J Clin Nutr* 2011;94:1088-96. doi:10.3945/ajcn.111.018978
  - 40 Zhang M, Picard-Deland E, Marette A. Fish and marine omega-3 polyunsaturated Fatty Acid consumption and incidence of type 2 diabetes: a systematic review and meta-analysis. *Int J Endocrinol* 2013;2013:501015. doi:10.1155/2013/501015
  - 41 Pimpin L, Wu JH, Hasckelberg H, Del Gobbo L, Mozaffarian D. Is butter back? A systematic review and meta-analysis of butter consumption and risk of cardiovascular disease, diabetes, and total mortality. *PLoS One* 2016;11:e0158118. doi:10.1371/journal.pone.0158118
  - 42 Schwingshackl L, Lampousi AM, Portillo MP, Romaguera D, Hoffmann G, Boeing H. Olive oil in the prevention and management of type 2 diabetes mellitus: a systematic review and meta-analysis of cohort studies and intervention trials. *Nutr Diabetes* 2017;7:e262. doi:10.1038/nutd.2017.12
  - 43 Schwingshackl L, Schwedhelm C, Hoffmann G, Boeing H. Potatoes and risk of chronic disease: a systematic review and dose-response meta-analysis. *Eur J Nutr* 2018. doi:10.1007/s00394-018-1774-2
  - 44 Aune D, Norat T, Romundstad P, Vatten LJ. Whole grain and refined grain consumption and the risk of type 2 diabetes: a systematic review and dose-response meta-analysis of cohort studies. *Eur J Epidemiol* 2013;28:845-58. doi:10.1007/s10654-013-9852-5
  - 45 Saneei P, Larijani B, Esmailzadeh A. Rice consumption, incidence of chronic diseases and risk of mortality: meta-analysis of cohort studies. *Public Health Nutr* 2017;20:233-44. doi:10.1017/S1368980016002172
  - 46 Tian S, Xu Q, Jiang R, Han T, Sun C, Na L. Dietary protein consumption and the risk of type 2 diabetes: a systematic review and meta-analysis of cohort studies. *Nutrients* 2017;9:E982. doi:10.3390/nu9090982
  - 47 Li M, Fan Y, Zhang X, Hou W, Tang Z. Fruit and vegetable intake and risk of type 2 diabetes mellitus: meta-analysis of prospective cohort studies. *BMJ Open* 2014;4:e005497. doi:10.1136/bmjopen-2014-005497
  - 48 Guo X, Yang B, Tan J, Jiang J, Li D. Associations of dietary intakes of anthocyanins and berry fruits with risk of type 2 diabetes mellitus: a systematic review and meta-analysis of prospective cohort studies. *Eur J Clin Nutr* 2016;70:1360-7. doi:10.1038/ejcn.2016.142
  - 49 Jia X, Zhong L, Song Y, Hu Y, Wang G, Sun S. Consumption of citrus and cruciferous vegetables with incident type 2 diabetes mellitus based on a meta-analysis of prospective study. *Prim Care Diabetes* 2016;10:272-80. doi:10.1016/j.pcd.2015.12.004
  - 50 Guo XF, Yang B, Tang J, Jiang JJ, Li D. Apple and pear consumption and type 2 diabetes mellitus risk: a meta-analysis of prospective cohort studies. *Food Funct* 2017;8:927-34. doi:10.1039/C6FO01378C
  - 51 Wang PY, Fang JC, Gao ZH, Zhang C, Xie SY. Higher intake of fruits, vegetables or their fiber reduces the risk of type 2 diabetes: A meta-analysis. *J Diabetes Investig* 2016;7:56-69. doi:10.1111/jdi.12376
  - 52 Chen GC, Koh WP, Yuan JM, Qin LQ, van Dam RM. Green leafy and cruciferous vegetable consumption and risk of type 2 diabetes: results from the Singapore Chinese Health Study and meta-analysis. *Br J Nutr* 2018;119:1057-67. doi:10.1017/S0007114518000119
  - 53 Yang WS, Wang WY, Fan WY, Deng Q, Wang X. Tea consumption and risk of type 2 diabetes: a dose-response meta-analysis of cohort studies. *Br J Nutr* 2014;111:1329-39. doi:10.1017/S0007114513003887
  - 54 Ding M, Bhupathiraju SN, Chen M, van Dam RM, Hu FB. Caffeinated and decaffeinated coffee consumption and risk of type 2 diabetes: a systematic review and a dose-response meta-analysis. *Diabetes Care* 2014;37:569-86. doi:10.2337/dc13-1203
  - 55 Carlström M, Larsson SC. Coffee consumption and reduced risk of developing type 2 diabetes: a systematic review with meta-analysis. *Nutr Rev* 2018;76:395-417. doi:10.1093/nutrit/nyy014
  - 56 Imamura F, O'Connor L, Ye Z, et al. Consumption of sugar sweetened beverages, artificially sweetened beverages, and fruit juice and incidence of type 2 diabetes: systematic review, meta-analysis, and estimation of population attributable fraction. *BMJ* 2015;351:h3576. doi:10.1136/bmj.h3576
  - 57 Xi B, Li S, Liu Z, et al. Intake of fruit juice and incidence of type 2 diabetes: a systematic review and meta-analysis. *PLoS One* 2014;9:e93471. doi:10.1371/journal.pone.0093471
  - 58 Zhao LG, Zhang QL, Liu XL, Wu H, Zheng JL, Xiang YB. Dietary protein intake and risk of type 2 diabetes: a dose-response meta-analysis of prospective studies. *Eur J Nutr* 2018. doi:10.1007/s00394-018-1737-7
  - 59 Alhazmi A, Stojanovski E, McEvoy M, Garg ML. Macronutrient intakes and development of type 2 diabetes: a systematic review and meta-analysis of cohort studies. *J Am Coll Nutr* 2012;31:243-58. doi:10.1080/07315724.2012.10720425
  - 60 Zhou Y, Tian C, Jia C. Association of fish and n-3 fatty acid intake with the risk of type 2 diabetes: a meta-analysis of prospective studies. *Br J Nutr* 2012;108:408-17. doi:10.1017/S0007114512002036
  - 61 Wu JH, Micha R, Imamura F, et al. Omega-3 fatty acids and incident type 2 diabetes: a systematic review and meta-



- analysis. *Br J Nutr* 2012;107(Suppl 2):S214-27. doi:10.1017/S0007114512001602
- 62 de Souza RJ, Mente A, Maroleanu A, et al. Intake of saturated and trans unsaturated fatty acids and risk of all cause mortality, cardiovascular disease, and type 2 diabetes: systematic review and meta-analysis of observational studies. *BMJ* 2015;351:h3978. doi:10.1136/bmj.h3978
- 63 Tajima R, Kodama S, Hirata M, et al. High cholesterol intake is associated with elevated risk of type 2 diabetes mellitus - a meta-analysis. *Clin Nutr* 2014;33:946-50. doi:10.1016/j.clnu.2014.03.001
- 64 Tsilas CS, de Souza RJ, Mejia SB, et al. Relation of total sugars, fructose and sucrose with incident type 2 diabetes: a systematic review and meta-analysis of prospective cohort studies. *CMAJ* 2017;189:E711-20. doi:10.1503/cmaj.160706
- 65 InterAct Consortium. Dietary fibre and incidence of type 2 diabetes in eight European countries: the EPIC-InterAct Study and a meta-analysis of prospective studies. *Diabetologia* 2015;58:1394-408. doi:10.1007/s00125-015-3585-9
- 66 Zhao LM, Tian XQ, Ge JP, Xu YC. Vitamin D intake and type 2 diabetes risk: a meta-analysis of prospective cohort studies. *Afr Health Sci* 2013;13:1130-8. doi:10.4314/ahs.v13i4.38
- 67 Goldie C, Taylor AJ, Nguyen P, McCoy C, Zhao XQ, Preiss D. Niacin therapy and the risk of new-onset diabetes: a meta-analysis of randomised controlled trials. *Heart* 2016;102:198-203. doi:10.1136/heartjnl-2015-308055
- 68 Bao W, Rong Y, Rong S, Liu L. Dietary iron intake, body iron stores, and the risk of type 2 diabetes: a systematic review and meta-analysis. *BMC Med* 2012;10:119. doi:10.1186/1741-7015-10-119
- 69 Fang X, Wang K, Han D, et al. Dietary magnesium intake and the risk of cardiovascular disease, type 2 diabetes, and all-cause mortality: a dose-response meta-analysis of prospective cohort studies. *BMC Med* 2016;14:210. doi:10.1186/s12916-016-0742-z
- 70 Dong JY, Qin LQ. Dietary calcium intake and risk of type 2 diabetes: possible confounding by magnesium. *Eur J Clin Nutr* 2012;66:408-10. doi:10.1038/ejcn.2012.5
- 71 Mao S, Zhang A, Huang S. Selenium supplementation and the risk of type 2 diabetes mellitus: a meta-analysis of randomized controlled trials [correction in: *Endocrine* 2016;52:401]. *Endocrine* 2014;47:758-63. doi:10.1007/s12020-014-0298-7
- 72 Rienks J, Barbaresco J, Oluwagbemigun K, Schmid M, Nöthlings U. Polyphenol exposure and risk of type 2 diabetes: dose-response meta-analyses and systematic review of prospective cohort studies. *Am J Clin Nutr* 2018;108:49-61. doi:10.1093/ajcn/nqy083
- 73 Hamer M, Chida Y. Intake of fruit, vegetables, and antioxidants and risk of type 2 diabetes: systematic review and meta-analysis. *J Hypertens* 2007;25:2361-9. doi:10.1097/HJH.0b013e3282efc214
- 74 Li XH, Yu FF, Zhou YH, He J. Association between alcohol consumption and the risk of incident type 2 diabetes: a systematic review and dose-response meta-analysis. *Am J Clin Nutr* 2016;103:818-29. doi:10.3945/ajcn.115.114389
- 75 Huang J, Wang X, Zhang Y. Specific types of alcoholic beverage consumption and risk of type 2 diabetes: A systematic review and meta-analysis. *J Diabetes Investig* 2017;8:56-68. doi:10.1111/jdi.12537
- 76 Li Y, Zhou C, Zhou X, Li L. Egg consumption and risk of cardiovascular diseases and diabetes: a meta-analysis. *Atherosclerosis* 2013;229:524-30. doi:10.1016/j.atherosclerosis.2013.04.003
- 77 Shin JY, Xun P, Nakamura Y, He K. Egg consumption in relation to risk of cardiovascular disease and diabetes: a systematic review and meta-analysis. *Am J Clin Nutr* 2013;98:146-59. doi:10.3945/ajcn.112.051318
- 78 Djoussé L, Khawaja OA, Gaziano JM. Egg consumption and risk of type 2 diabetes: a meta-analysis of prospective studies. *Am J Clin Nutr* 2016;103:474-80. doi:10.3945/ajcn.115.119933
- 79 Wallin A, Forouhi NG, Wolk A, Larsson SC. Egg consumption and risk of type 2 diabetes: a prospective study and dose-response meta-analysis. *Diabetologia* 2016;59:1204-13. doi:10.1007/s00125-016-3923-6
- 80 Fuhrman BJ, Smit E, Crespo CJ, Garcia-Palmieri MR. Coffee intake and risk of incident diabetes in Puerto Rican men: results from the Puerto Rico Heart Health Program. *Public Health Nutr* 2009;12:842-8. doi:10.1017/S1368980008003303
- 81 Strodl E, Kenardy J. Psychosocial and non-psychosocial risk factors for the new diagnosis of diabetes in elderly women. *Diabetes Res Clin Pract* 2006;74:57-65. doi:10.1016/j.diabres.2006.02.011
- 82 Lee DH, Ha MH, Kim JH, et al. Gamma-glutamyltransferase and diabetes--a 4 year follow-up study. *Diabetologia* 2003;46:359-64. doi:10.1007/s00125-003-1036-5
- 83 Ley SH, Hamdy O, Mohan V, Hu FB. Prevention and management of type 2 diabetes: dietary components and nutritional strategies. *Lancet* 2014;383:1999-2007. doi:10.1016/S0140-6736(14)60613-9
- 84 American Diabetes Association. 5. Prevention or delay of type 2 diabetes: standards of medical care in diabetes-2018. *Diabetes Care* 2018;41(Suppl 1):S51-4. doi:10.2337/dc18-S005
- 85 Mann JI, De Leeuw I, Hermansen K, et al. Diabetes and Nutrition Study Group (DNSG) of the European Association. Evidence-based nutritional approaches to the treatment and prevention of diabetes mellitus. *Nutr Metab Cardiovasc Dis* 2004;14:373-94. doi:10.1016/S0939-4753(04)80028-0
- 86 Dyson PA, Kelly T, Deakin T, et al. Diabetes UK Nutrition Working Group. Diabetes UK evidence-based nutrition guidelines for the prevention and management of diabetes. *Diabet Med* 2011;28:1282-8. doi:10.1111/j.1464-5491.2011.03371.x
- 87 Afshin A, Micha R, Khatibzadeh S, Mozaffarian D. Consumption of nuts and legumes and risk of incident ischemic heart disease, stroke, and diabetes: a systematic review and meta-analysis. *Am J Clin Nutr* 2014;100:278-88. doi:10.3945/ajcn.113.076901
- 88 Parker ED, Harnack LJ, Folsom AR. Nut consumption and risk of type 2 diabetes. *JAMA* 2003;290:38-9. author reply 39-40. doi:10.1001/jama.290.1.38
- 89 Hu EA, Toledo E, Diez-Espino J, et al. Lifestyles and risk factors associated with adherence to the Mediterranean diet: a baseline assessment of the PREDIMED trial. *PLoS One* 2013;8:e60166. doi:10.1371/journal.pone.0060166
- 90 Patino-Alonso MC, Recio-Rodriguez JI, Belio JF, et al. EVIDENT Group. Factors associated with adherence to the Mediterranean diet in the adult population. *J Acad Nutr Diet* 2014;114:583-9. doi:10.1016/j.jand.2013.07.038
- 91 Franssen HP, Boer JMA, Beulens JWJ, et al. Associations between lifestyle factors and an unhealthy diet. *Eur J Public Health* 2017;27:274-8. doi:10.1093/eurpub/ckw190
- 92 McKeown NM. Whole grain intake and insulin sensitivity: evidence from observational studies. *Nutr Rev* 2004;62:286-91. doi:10.1111/j.1753-4887.2004.tb00054.x
- 93 Liese AD, Roach AK, Sparks KC, Marquart L, D'Agostino RB Jr, Mayer-Davis EJ. Whole-grain intake and insulin sensitivity: the Insulin Resistance Atherosclerosis Study. *Am J Clin Nutr* 2003;78:965-71. doi:10.1093/ajcn/78.5.965
- 94 Pereira MA, Jacobs DR Jr, Pins JJ, et al. Effect of whole grains on insulin sensitivity in overweight hyperinsulinemic adults. *Am J Clin Nutr* 2002;75:848-55. doi:10.1093/ajcn/75.5.848
- 95 Jang Y, Lee JH, Kim OY, Park HY, Lee SY. Consumption of whole grain and legume powder reduces insulin demand, lipid peroxidation, and plasma homocysteine concentrations in patients with coronary artery disease: randomized controlled clinical trial. *Arterioscler Thromb Vasc Biol* 2001;21:2065-71. doi:10.1161/hq1201.100258
- 96 Montonen J, Boeing H, Fritsche A, et al. Consumption of red meat and whole-grain bread in relation to biomarkers of obesity, inflammation, glucose metabolism and oxidative stress. *Eur J Nutr* 2013;52:337-45. doi:10.1007/s00394-012-0340-6
- 97 Qi L, van Dam RM, Liu S, Franz M, Mantzoros C, Hu FB. Whole-grain, bran, and cereal fiber intakes and markers of systemic inflammation in diabetic women. *Diabetes Care* 2006;29:207-11. doi:10.2337/diacare.29.02.06.dc05-1903
- 98 Gaskins AJ, Mumford SL, Rovner AJ, et al. BioCycle Study Group. Whole grains are associated with serum concentrations of high sensitivity C-reactive protein among premenopausal women. *J Nutr* 2010;140:1669-76. doi:10.3945/jn.110.124164
- 99 Masters RC, Liese AD, Haffner SM, Wagenknecht LE, Hanley AJ. Whole and refined grain intakes are related to inflammatory protein concentrations in human plasma. *J Nutr* 2010;140:587-94. doi:10.3945/jn.109.116640
- 100 Katcher HI, Legro RS, Kunselman AR, et al. The effects of a whole grain-enriched hypocaloric diet on cardiovascular disease risk factors in men and women with metabolic syndrome. *Am J Clin Nutr* 2008;87:79-90. doi:10.1093/ajcn/87.1.79
- 101 Liu C, Feng X, Li Q, Wang Y, Li Q, Hua M. Adiponectin, TNF- $\alpha$  and inflammatory cytokines and risk of type 2 diabetes: A systematic review and meta-analysis. *Cytokine* 2016;86:100-9. doi:10.1016/j.cyt.2016.06.028
- 102 Qi L, Meigs JB, Liu S, Manson JE, Mantzoros C, Hu FB. Dietary fibers and glycemic load, obesity, and plasma adiponectin levels in women with type 2 diabetes. *Diabetes Care* 2006;29:1501-5. doi:10.2337/dc06-0221
- 103 Marventano S, Vetrani C, Vitale M, Godos J, Riccardi G, Grosso G. Whole grain intake and glycaemic control in healthy subjects: a systematic review and meta-analysis of randomized controlled trials. *Nutrients* 2017;9:E769. doi:10.3390/nu9070769
- 104 Ludwig DS. The glycemic index: physiological mechanisms relating to obesity, diabetes, and cardiovascular disease. *JAMA* 2002;287:2414-23. doi:10.1001/jama.287.18.2414
- 105 Buyken AE, Mitchell P, Ceriello A, Brand-Miller J. Optimal dietary approaches for prevention of type 2 diabetes: a life-course perspective. *Diabetologia* 2010;53:406-18. doi:10.1007/s00125-009-1629-8

- 106 Mozaffarian D, Hao T, Rimm EB, Willett WC, Hu FB. Changes in diet and lifestyle and long-term weight gain in women and men. *N Engl J Med* 2011;364:2392-404. doi:10.1056/NEJMoa1014296
- 107 Fretts AM, Follis JL, Nettleton JA, et al. Consumption of meat is associated with higher fasting glucose and insulin concentrations regardless of glucose and insulin genetic risk scores: a meta-analysis of 50,345 Caucasians. *Am J Clin Nutr* 2015;102:1266-78. doi:10.3945/ajcn.114.101238
- 108 Barak F, Falahi E, Keshteli AH, Yazdankhan A, Saneei P, Esmailzadeh A. Red meat intake, insulin resistance, and markers of endothelial function among Iranian women. *Mol Nutr Food Res* 2015;59:315-22. doi:10.1002/mnfr.201400333
- 109 Ley SH, Sun Q, Willett WC, et al. Associations between red meat intake and biomarkers of inflammation and glucose metabolism in women. *Am J Clin Nutr* 2014;99:352-60. doi:10.3945/ajcn.113.075663
- 110 Steinbrecher A, Erber E, Grandinetti A, Kolonel LN, Maskarinec G. Meat consumption and risk of type 2 diabetes: the Multiethnic Cohort. *Public Health Nutr* 2011;14:568-74. doi:10.1017/S1368980010002004
- 111 Bendinelli B, Palli D, Masala G, et al, InterAct Consortium. Association between dietary meat consumption and incident type 2 diabetes: the EPIC-InterAct study. *Diabetologia* 2013;56:47-59. doi:10.1007/s00125-012-2718-7
- 112 Vergnaud AC, Norat T, Romaguera D, et al. Meat consumption and prospective weight change in participants of the EPIC-PANACEA study. *Am J Clin Nutr* 2010;92:398-407. doi:10.3945/ajcn.2009.28713
- 113 Kurotani K, Nanri A, Goto A, et al, Japan Public Health Center-based Prospective Study Group. Red meat consumption is associated with the risk of type 2 diabetes in men but not in women: a Japan Public Health Center-based Prospective Study. *Br J Nutr* 2013;110:1910-8. doi:10.1017/S0007114513001128
- 114 Talaei M, Wang YL, Yuan JM, Pan A, Koh WP. Meat, dietary heme iron, and risk of type 2 diabetes mellitus: the Singapore Chinese Health Study. *Am J Epidemiol* 2017;186:824-33. doi:10.1093/aje/kwx156
- 115 Lv J, Yu C, Guo Y, et al, China Kadoorie Biobank Collaborative Group. Adherence to a healthy lifestyle and the risk of type 2 diabetes in Chinese adults. *Int J Epidemiol* 2017;46:1410-20. doi:10.1093/ije/dyx074
- 116 Isanejad M, LaCroix AZ, Thomson CA, et al. Branched-chain amino acid, meat intake and risk of type 2 diabetes in the Women's Health Initiative. *Br J Nutr* 2017;117:1523-30. doi:10.1017/S0007114517001568
- 117 Mari-Sanchis A, Gea A, Basterra-Gortari FJ, Martinez-Gonzalez MA, Beunza JJ, Bes-Rastrollo M. Meat consumption and risk of developing type 2 diabetes in the SUN project: a highly educated middle-class population. *PLoS One* 2016;11:e0157990. doi:10.1371/journal.pone.0157990
- 118 Guasch-Ferré M, Becerra-Tomás N, Ruiz-Canela M, et al. Total and subtypes of dietary fat intake and risk of type 2 diabetes mellitus in the Prevención con Dieta Mediterránea (PREDIMED) study. *Am J Clin Nutr* 2017;105:723-35. doi:10.3945/ajcn.116.142034
- 119 Eufinger SC, Votaw J, Faber T, et al. Habitual dietary sodium intake is inversely associated with coronary flow reserve in middle-aged male twins. *Am J Clin Nutr* 2012;95:572-9. doi:10.3945/ajcn.111.018077
- 120 Muris DM, Houben AJ, Schram MT, Stehouwer CD. Microvascular dysfunction is associated with a higher incidence of type 2 diabetes mellitus: a systematic review and meta-analysis. *Arterioscler Thromb Vasc Biol* 2012;32:3082-94. doi:10.1161/ATVBAHA.112.300291
- 121 Karaca Ü, Schram MT, Houben AJ, Muris DM, Stehouwer CD. Microvascular dysfunction as a link between obesity, insulin resistance and hypertension. *Diabetes Res Clin Pract* 2014;103:382-7. doi:10.1016/j.diabres.2013.12.012
- 122 Pacher P, Beckman JS, Liaudet L. Nitric oxide and peroxynitrite in health and disease. *Physiol Rev* 2007;87:315-424. doi:10.1152/physrev.00029.2006
- 123 Rajpathak SN, Crandall JP, Wylie-Rosett J, Kabat GC, Rohan TE, Hu FB. The role of iron in type 2 diabetes in humans. *Biochim Biophys Acta* 2009;1790:671-81. doi:10.1016/j.bbagen.2008.04.005
- 124 Uribarri J, Woodruff S, Goodman S, et al. Advanced glycation end products in foods and a practical guide to their reduction in the diet. *J Am Diet Assoc* 2010;110:911-16.e12. doi:10.1016/j.jada.2010.03.018
- 125 Uribarri J, Cai W, Peppas M, et al. Circulating glycotoxins and dietary advanced glycation endproducts: two links to inflammatory response, oxidative stress, and aging. *J Gerontol A Biol Sci Med Sci* 2007;62:427-33. doi:10.1093/gerona/62.4.427
- 126 Vlassara H, Cai W, Crandall J, et al. Inflammatory mediators are induced by dietary glycotoxins, a major risk factor for diabetic angiopathy [correction in: *Proc Natl Acad Sci U S A* 2003;100:763]. *Proc Natl Acad Sci U S A* 2002;99:15596-601. doi:10.1073/pnas.242407999
- 127 Malik VS, Hu FB. Sweeteners and risk of obesity and type 2 diabetes: the role of sugar-sweetened beverages. *Curr Diab Rep* 2012. doi:10.1007/s11892-012-0259-6
- 128 Atkinson FS, Foster-Powell K, Brand-Miller JC. International tables of glycemic index and glycemic load values: 2008. *Diabetes Care* 2008;31:2281-3. doi:10.2337/dc08-1239
- 129 Kahlhöfer J, Karschin J, Silberhorn-Bühler H, Breusing N, Bosy-Westphal A. Effect of low-glycemic-sugar-sweetened beverages on glucose metabolism and macronutrient oxidation in healthy men. *Int J Obes (Lond)* 2016;40:990-7. doi:10.1038/ijo.2016.25
- 130 Stanhope KL. Role of fructose-containing sugars in the epidemics of obesity and metabolic syndrome. *Annu Rev Med* 2012;63:329-43. doi:10.1146/annurev-med-042010-113026
- 131 Kuzma JN, Cromer G, Hagman DK, et al. No difference in ad libitum energy intake in healthy men and women consuming beverages sweetened with fructose, glucose, or high-fructose corn syrup: a randomized trial. *Am J Clin Nutr* 2015;102:1373-80. doi:10.3945/ajcn.115.116368
- 132 DiMeglio DP, Mattes RD. Liquid versus solid carbohydrate: effects on food intake and body weight. *Int J Obes Relat Metab Disord* 2000;24:794-800. doi:10.1038/sj.ijo.0801229
- 133 Gottschald M, Knüppel S, Boeing H, Buijsse B. The influence of adjustment for energy misreporting on relations of cake and cookie intake with cardiometabolic disease risk factors. *Eur J Clin Nutr* 2016;70:1318-24. doi:10.1038/ejcn.2016.131
- 134 Mayer EJ, Newman B, Quesenberry CP Jr, Friedman GD, Selby JV. Alcohol consumption and insulin concentrations. Role of insulin in associations of alcohol intake with high-density lipoprotein cholesterol and triglycerides. *Circulation* 1993;88:2190-7. doi:10.1161/01.CIR.88.5.2190
- 135 Facchini F, Chen YD, Reaven GM. Light-to-moderate alcohol intake is associated with enhanced insulin sensitivity. *Diabetes Care* 1994;17:115-9. doi:10.2337/diacare.17.2.115
- 136 Lazarus R, Sparrow D, Weiss ST. Alcohol intake and insulin levels. The Normative Aging Study. *Am J Epidemiol* 1997;145:909-16. doi:10.1093/oxfordjournals.aje.a009050
- 137 Schrieks IC, Heil AL, Hendriks HF, Mukamal KJ, Beulens JW. The effect of alcohol consumption on insulin sensitivity and glycemic status: a systematic review and meta-analysis of intervention studies. *Diabetes Care* 2015;38:723-32. doi:10.2337/dc14-1556
- 138 Chiva-Blanch G, Urpi-Sarda M, Ros E, et al. Effects of red wine polyphenols and alcohol on glucose metabolism and the lipid profile: a randomized clinical trial. *Clin Nutr* 2013;32:200-6. doi:10.1016/j.clnu.2012.08.022
- 139 Garcia-Compean D, Jaquez-Quintana JO, Gonzalez-Gonzalez JA, Maldonado-Garza H. Liver cirrhosis and diabetes: risk factors, pathophysiology, clinical implications and management. *World J Gastroenterol* 2009;15:280-8. doi:10.3748/wjg.15.280
- 140 World Cancer Research Fund/American Institute for Cancer Research. Diet, nutrition, physical activity and cancer: a global perspective. Continuous update project expert report 2018. <https://www.wcrf.org/sites/default/files/Summary-third-expert-report.pdf>
- 141 Keijzers GB, De Galan BE, Tack CJ, Smits P. Caffeine can decrease insulin sensitivity in humans. *Diabetes Care* 2002;25:364-9. doi:10.2337/diacare.25.2.364
- 142 Cespedes EM, Hu FB. Dietary patterns: from nutritional epidemiologic analysis to national guidelines. *Am J Clin Nutr* 2015;101:899-900. doi:10.3945/ajcn.115.110213
- 143 Salas-Salvadó J, Bulló M, Babio, et al, NPREDIMED Study Investigators. Reduction in the incidence of type 2 diabetes with the Mediterranean diet: results of the PREDIMED-Reus nutrition intervention randomized trial [correction in: *Diabetes Care* 2011;34:14-19]. *Diabetes Care* 2011;34:14-9. doi:10.2337/dc10-1288
- 144 Langan D, Higgins JPT, Jackson D, et al. A comparison of heterogeneity variance estimators in simulated random-effects meta-analyses. *Res Synth Methods* 2019;10:83-98. doi:10.1002/jrsm.1316
- 145 Wallin A, Di Giuseppe D, Orsini N, Patel PS, Forouhi NG, Wolk A. Fish consumption, dietary long-chain n-3 fatty acids, and risk of type 2 diabetes: systematic review and meta-analysis of prospective studies. *Diabetes Care* 2012;35:918-29. doi:10.2337/dc11-1631
- 146 Luo C, Zhang Y, Ding Y, et al. Nut consumption and risk of type 2 diabetes, cardiovascular disease, and all-cause mortality: a systematic review and meta-analysis. *Am J Clin Nutr* 2014;100:256-69. doi:10.3945/ajcn.113.076109
- 147 Hodson L, Skeaff CM, Fielding BA. Fatty acid composition of adipose tissue and blood in humans and its use as a biomarker of dietary intake. *Prog Lipid Res* 2008;47:348-80. doi:10.1016/j.plipres.2008.03.003
- 148 Flock MR, Skulas-Ray AC, Harris WS, Etherton TD, Fleming JA, Kris-Etherton PM. Determinants of erythrocyte omega-3 fatty acid content in response to fish oil supplementation: a dose-response randomized controlled trial. *J Am Heart Assoc* 2013;2:e000513. doi:10.1161/JAHA.113.000513

- 149 Pan A, Sun Q, Bernstein AM, Manson JE, Willett WC, Hu FB. Changes in red meat consumption and subsequent risk of type 2 diabetes mellitus: three cohorts of US men and women. *JAMA Intern Med* 2013;173:1328-35. doi:10.1001/jamainternmed.2013.6633
- 150 Guyatt G, Oxman AD, Akl EA, et al. GRADE guidelines: 1. Introduction- GRADE evidence profiles and summary of findings tables. *J Clin Epidemiol* 2011;64:383-94. doi:10.1016/j.jclinepi.2010.04.026
- 151 Ceriello A, Esposito K, La Sala L, et al. The protective effect of the Mediterranean diet on endothelial resistance to GLP-1 in type 2 diabetes: a preliminary report. *Cardiovasc Diabetol* 2014;13:140. doi:10.1186/s12933-014-0140-9

**Web appendix: Supplement**