



OPEN ACCESS



Circulating high sensitivity C reactive protein concentrations and risk of lung cancer: nested case-control study within Lung Cancer Cohort Consortium

David C Muller,^{1,2} Tricia L Larose,^{1,3} Allison Hodge,^{4,5} Florence Guida,¹ Arnulf Langhammer,⁶ Kjell Grankvist,⁷ Klaus Meyer,⁸ Qiuyin Cai,⁹ Alan A Arslan,^{10,11} Anne Zeleniuch-Jacquotte,¹¹ Demetrius Albanes,¹² Graham G Giles,^{4,5} Howard D Sesso,^{13,14,15} I-Min Lee,^{13,15} J Michael Gaziano,^{14,15,16} Jian-Min Yuan,^{17,18} Judith Hoffman Bolton,¹⁹ Julie E Buring,^{13,15} Kala Visvanathan,¹⁹ Loic Le Marchand,²⁰ Mark P Purdue,²¹ Neil E Caporaso,²¹ Øivind Midttun,⁸ Per M Ueland,^{22,23} Ross L Prentice,^{22,23} Stephanie J Weinstein,¹² Victoria L Stevens,²⁵ Wei Zheng,⁹ William J Blot,⁹ Xiao-Ou Shu,⁹ Xuehong Zhang,²⁶ Yong-Bing Xiang,²⁷ Woon-Puay Koh,²⁸ Kristian Hveem,³⁶ Cynthia A Thomson,²⁹ Mary Pettinger,²⁴ Gunnar Engström,³⁰ Hans Brunnström,³¹ Roger L Milne,⁴⁵ Meir J Stampfer,^{13,26,32} Jiali Han,^{33,34} Mikael Johansson,³⁵ Paul Brennan,¹ Gianluca Severi,^{4,36,37} Mattias Johansson¹

For numbered affiliations see end of article.

Correspondence to: D C Muller david.muller@imperial.ac.uk (or @davidcmuller on Twitter; ORCID 0000-0002-2350-0417)

Additional material is published online only. To view please visit the journal online.

Cite this as: *BMJ* 2018;364:k4981 <http://dx.doi.org/10.1136/bmj.k4981>

Accepted: 1 November 2018

ABSTRACT

OBJECTIVES

To conduct a comprehensive analysis of prospectively measured circulating high sensitivity C reactive protein (hsCRP) concentration and risk of lung cancer overall, by smoking status (never, former, and current smokers), and histological sub-type.

DESIGN

Nested case-control study.

SETTING

20 population based cohort studies in Asia, Europe, Australia, and the United States.

PARTICIPANTS

5299 patients with incident lung cancer, with individually incidence density matched controls.

EXPOSURE

Circulating hsCRP concentrations in prediagnostic serum or plasma samples.

MAIN OUTCOME MEASURE

Incident lung cancer diagnosis.

RESULTS

A positive association between circulating hsCRP concentration and the risk of lung cancer for current (odds ratio associated with a doubling in hsCRP concentration 1.09, 95% confidence interval 1.05 to 1.13) and former smokers (1.09, 1.04 to 1.14) was observed, but not for never smokers ($P < 0.01$

for interaction). This association was strong and consistent across all histological subtypes, except for adenocarcinoma, which was not strongly associated with hsCRP concentration regardless of smoking status (odds ratio for adenocarcinoma overall 0.97, 95% confidence interval 0.94 to 1.01). The association between circulating hsCRP concentration and the risk of lung cancer was strongest in the first two years of follow-up for former and current smokers. Including hsCRP concentration in a risk model, in addition to smoking based variables, did not improve risk discrimination overall, but slightly improved discrimination for cancers diagnosed in the first two years of follow-up.

CONCLUSIONS

Former and current smokers with higher circulating hsCRP concentrations had a higher risk of lung cancer overall. Circulating hsCRP concentration was not associated with the risk of lung adenocarcinoma. Circulating hsCRP concentration could be a prediagnostic marker of lung cancer rather than a causal risk factor.

Introduction

Lung cancer is the leading cause of mortality related to cancer,¹ accounting for 1.7 million deaths worldwide every year.² Tobacco smoke exposure is known to cause most lung cancer cases,¹ but a deeper understanding of intermediate factors that influence lung cancer pathogenesis is limited. In general, inflammation has been proposed to be an important risk factor for cancer, but the extent to which inflammation could drive the risk of lung cancer is unclear.³

C reactive protein (CRP) is an acute phase inflammatory protein that is synthesised in the liver in response to low grade inflammation.^{4,5} High sensitivity CRP (hsCRP) responds as a sensitive but non-specific biomarker for systemic inflammation. Two independent case-control studies nested in the Prostate, Lung, Colorectal, and Ovarian Cancer Screening Trial showed a positive association between circulating CRP concentrations and risk of lung cancer for current and

WHAT IS ALREADY KNOWN ON THIS TOPIC

Previous studies have shown that C reactive protein (CRP), a marker of systemic inflammation, is associated with the risk of lung cancer

The studies have not been sufficiently large to provide precise estimates of association by smoking status (never, former, or current smokers)

WHAT THIS STUDY ADDS

High sensitivity CRP (hsCRP) concentration is associated with the risk of lung cancer in former and current smokers, but not in never smokers

The association is strongest in the first two years after blood draw

hsCRP concentration is not associated with the risk of lung adenocarcinoma

Table 1 | Distribution of participant characteristics, overall and by region. Values are numbers (percentages)

Characteristic	Overall		Asia		Europe and Australia		US	
	Control	Case	Control	Case	Control	Case	Control	Case
Total	5299 (100)	5299 (100)	1757 (100)	1757 (100)	1159 (100)	1159 (100)	2383 (100)	2383 (100)
Sex:								
Men	2873 (54)	2873 (54)	1218 (69)	1218 (69)	671 (58)	671 (58)	984 (41)	984 (41)
Women	2426 (46)	2426 (46)	539 (31)	539 (31)	488 (42)	488 (42)	1399 (59)	1399 (59)
Smoking status:								
Never	1305 (25)	1305 (25)	592 (34)	592 (34)	147 (13)	147 (13)	566 (24)	566 (24)
Former	1498 (28)	1498 (28)	175 (10)	175 (10)	325 (28)	325 (28)	998 (42)	998 (42)
Current	2496 (47)	2496 (47)	990 (56)	990 (56)	687 (59)	687 (59)	819 (34)	819 (34)
Age (years) at baseline:								
17-54	1539 (29)	1519 (29)	432 (25)	428 (24)	331 (29)	334 (29)	776 (33)	757 (32)
55-59	997 (19)	991 (19)	377 (21)	365 (21)	251 (22)	251 (22)	369 (15)	375 (16)
60-64	1238 (23)	1256 (24)	436 (25)	464 (26)	336 (29)	327 (28)	466 (20)	465 (20)
65-86	1525 (29)	1533 (29)	512 (29)	500 (28)	241 (21)	247 (21)	772 (32)	786 (33)
Education:								
Less than high school	1670 (32)	1773 (33)	877 (50)	893 (51)	578 (50)	643 (55)	215 (9)	237 (10)
Completed high school	774 (15)	753 (14)	228 (13)	242 (14)	175 (15)	155 (13)	371 (16)	56 (15)
Vocational school	904 (17)	878 (17)	274 (16)	285 (16)	198 (17)	177 (15)	432 (18)	416 (17)
Some college	707 (13)	670 (13)	192 (11)	168 (10)	127 (11)	105 (9)	388 (16)	397 (17)
College graduate	492 (9)	518 (10)	113 (6)	102 (6)	63 (5)	61 (5)	316 (13)	355 (15)
Graduate studies	707 (13)	640 (12)	64 (4)	59 (3)	8 (1)	10 (1)	635 (27)	571 (24)
Missing	45 (1)	67 (1)	9 (1)	8 (0)	10 (1)	8 (1)	26 (1)	51 (2)
Body mass index (kg/m ²):								
14.1-24.9	2769 (52)	2973 (56)	1291 (73)	1347 (7)	434 (37)	519 (45)	1044 (44)	1107 (46)
25.0-29.9	1795 (34)	1658 (31)	420 (24)	364 (21)	524 (45)	457 (39)	851 (36)	837 (35)
30.0-59.5	673 (13)	604 (11)	46 (3)	46 (3)	199 (17)	182 (16)	428 (18)	376 (16)
Missing	62 (1)	64 (1)	0 (0)	0 (0)	2 (0)	1 (0)	60 (3)	63 (3)
hsCRP (µg/mL):								
0.00388-0.731	1325 (25)	1180 (22)	610 (35)	540 (31)	275 (24)	243 (21)	440 (18)	397 (17)
0.732-1.76	1320 (25)	1242 (23)	468 (27)	455 (26)	312 (27)	280 (24)	540 (23)	507 (21)
1.77-4.13	1326 (25)	1384 (26)	372 (21)	390 (22)	304 (26)	314 (27)	650 (27)	680 (29)
4.14-87.9	1328 (25)	1493 (28)	307 (17)	372 (21)	268 (23)	322 (28)	753 (32)	799 (34)

former smokers.⁶ More recently, an inverse association between CRP and the risk of lung cancer was reported for female never smokers, an important subgroup that the Prostate, Lung, Colorectal, and Ovarian Cancer Screening Trial was not adequately powered to assess.⁷

Both the low cost and increased availability of point-of-care CRP tests in the primary care setting warrant further investigation into the potential use of CRP as a risk biomarker for lung cancer development.⁸⁻¹⁰ The primary objective of our study was to comprehensively investigate the relation between circulating hsCRP concentration and the risk of lung cancer for never, former, and current smokers. The secondary objective of our study was to conduct a risk discrimination analysis

to evaluate whether circulating hsCRP concentration combined with self reported smoking information could better discriminate between current smokers at low and high risk of developing lung cancer, compared with self reported smoking information alone. This study used prediagnostic serum or plasma samples from 5299 individual incidence-density matched case-control pairs in the Lung Cancer Cohort Consortium, which included 20 prospective cohorts from Asia, Europe, Australia, and the United States.

Methods

Study population

All prospective cohorts with frozen baseline plasma or serum samples that were members of the US National Cancer Institute Cohort Consortium in 2009 were invited to participate in the Lung Cancer Cohort Consortium. A total of 20 prospective cohorts from Asia, Europe, Australia, and the US were invited and agreed to participate in the Lung Cancer Cohort Consortium. At recruitment, research participants provided written informed consent to their respective cohorts, and the Lung Cancer Cohort Consortium project was approved by the institutional review boards of each participating institution. Participants in each cohort were followed up for incident cancer diagnoses and vital status, predominantly by linkage to population registers. Further details about Lung Cancer Cohort Consortium cohort recruitment and participant follow-up

Table 2 | Clinical characteristics of lung cancer cases, overall and by region. Values are numbers (percentages)

Characteristics	Overall	Asia	Europe and Australia	US
Time (years) from blood draw to diagnosis:				
0.0-1.9	583 (11)	257 (15)	82 (7)	244 (10)
2.0-4.9	1325 (25)	463 (26)	134 (12)	728 (31)
5.0-9.9	1631 (31)	613 (35)	362 (31)	656 (28)
10.0-35.6	1577 (30)	424 (24)	581 (50)	572 (24)
Histology:				
Large cell	173 (3)	16 (1)	46 (4)	111 (5)
Small cell	484 (9)	98 (6)	146 (13)	240 (10)
Squamous cell	831 (16)	319 (18)	226 (19)	286 (12)
Adenocarcinoma	2030 (38)	608 (35)	398 (34)	1024 (43)
Other	595 (11)	124 (7)	178 (15)	293 (12)
Unknown or missing	1186 (22)	592 (4)	165 (14)	429 (18)

Table 3 | Odds ratios for lung cancer by high sensitivity C reactive protein (hsCRP) concentration in fourths, and for a doubling in hsCRP concentration

hsCRP concentration	No of controls	No of cases	Odds ratio (95% CI)	P value
Categorical ($\mu\text{g/mL}$):				
0.00388-0.731	1325	1180	1.00 (ref)	<0.001
0.732-1.76	1320	1242	1.05 (0.93 to 1.17)	
1.77-4.13	1326	1384	1.17 (1.04 to 1.31)	
4.14-87.9	1328	1493	1.26 (1.12 to 1.41)	
Continuous:				
Doubling in concentration	5299	5299	1.05 (1.03 to 1.08)	<0.001

procedures have been published,¹¹ and are available in the supplementary materials.

Selection of cases and controls

We defined lung cancer cases as all invasive cancers with ICD-O-2 (international classification of diseases for oncology, 2nd edition) codes C34.0 to C34.9. Former and never smokers were intentionally oversampled to improve statistical power in analyses stratified by smoking. We randomly selected controls for each case from risk-sets of patients who were alive and free of cancer at the time of diagnosis of their index case (incidence density matching). Cases and controls were individually matched by cohort, sex (male or female), age (initially ± 1 year, relaxed to ± 3 years), ethnic group (US cohorts only), date of blood draw (initially ± 1

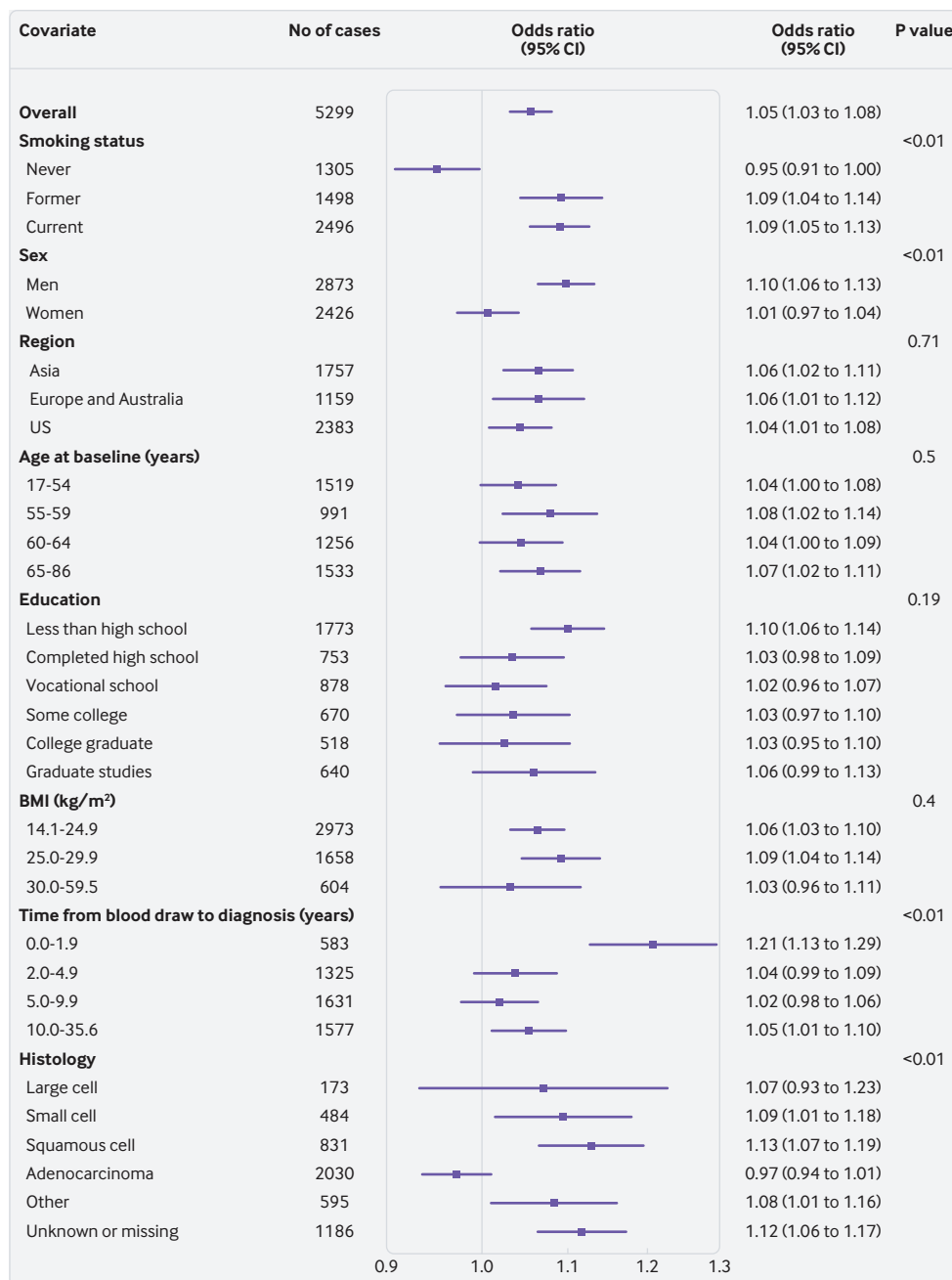


Fig 1 | Odds ratios for doubling in high sensitivity C reactive protein (hsCRP) concentration, overall and by participant characteristics. P values are from likelihood ratio tests of the interaction between hsCRP and each covariate

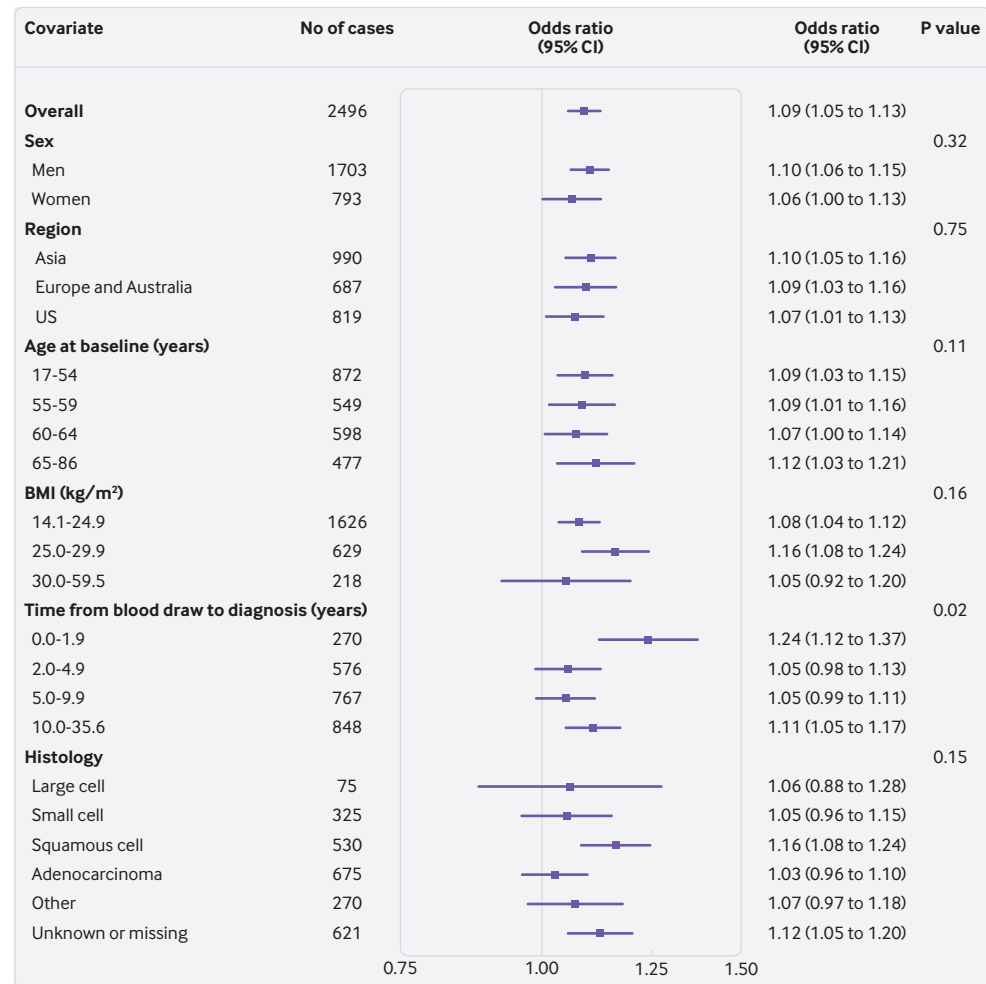


Fig 2 | Odds ratios for doubling in high sensitivity C reactive protein (hsCRP) concentration for current smokers by participant characteristics. P values are from likelihood ratio tests of the interaction between hsCRP and each covariate

month, relaxed to ± 3 months), and number of freeze-thaw cycles of their blood sample (0 or 1). We further matched cases and controls by smoking status in five categories: never smokers, short and long term quitters among former smokers (<10 years, ≥ 10 years since quitting), and light and heavy smokers among current smokers (<15 cigarettes per day, ≥ 15 cigarettes per day). Our self reported smoking covariates (smoking status, smoking duration, and smoking intensity) include tobacco use from cigarettes, cigars, and pipes. By convention, we refer to smoking intensity as cigarettes per day, even though the cigarettes per day variable in the current analysis also includes information on cigars and pipes. After matching and biochemical analyses, we used a total of 5299 case-control pairs in the current analysis, including 2496 current smoker pairs, 1498 former smoker pairs, and 1305 never smoker pairs.

Biochemical analysis

Centralised biochemical analyses of serum or plasma hsCRP and serum or plasma cotinine were performed at the BEVITAL Laboratory in Bergen,

Norway. Quantification of serum or plasma hsCRP was conducted by using Immuno-MALDI-MS.¹² For hsCRP, the lower limit of detection was 0.1 $\mu\text{g}/\text{mL}$, the within-day coefficient of variation was 3% to 6%, and the between-day coefficient of variation was 3% to 7%. Quantification of serum or plasma cotinine was performed by liquid chromatography-mass spectrometry (LC-MS/MS).¹³ For cotinine, the lower limit of detection was 1 nmol/L, the within-day coefficient of variation was 2% to 3%, and the between-day coefficient of variation was 6%. The intraclass correlation coefficient of cotinine was 0.89-0.95.¹⁴

Statistical analyses

We used conditional logistic regression to calculate odds ratios and 95% confidence intervals for incident lung cancer per fourths of hsCRP concentration. We also analysed hsCRP concentration as a continuous exposure variable by using the base 2 logarithm of hsCRP ($\text{OR}_{\log_2\text{CRP}}$). $\text{OR}_{\log_2\text{CRP}}$ estimates can be interpreted as the relative risk associated with a doubling in hsCRP concentration. Estimates from conditional logistic regression models were conditioned on matched case

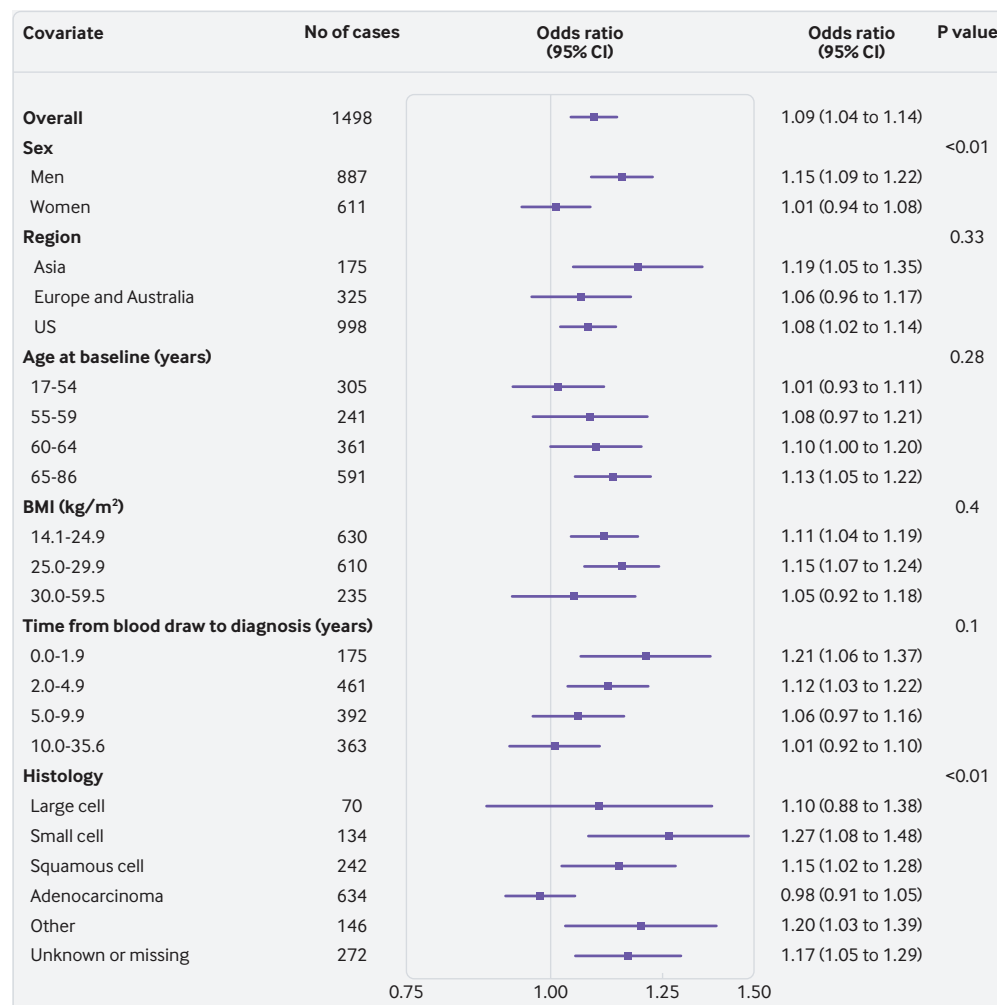


Fig 3 | Odds ratios for doubling in high sensitivity C reactive protein (hsCRP) concentration for former smokers by participant characteristics. P values are from likelihood ratio tests of the interaction between hsCRP and each covariate

set and adjusted for fourths of circulating cotinine concentration. P values were from likelihood ratio tests of the hsCRP terms.

In addition to controlling for tobacco exposure by the smoking-matched study design, we further adjusted models for circulating cotinine concentration (in fourths). All risk analyses were conducted overall, and stratified by smoking status (never, former, and current, to have sufficient sample size in each group for the stratified estimates), and region (Asia, Europe and Australia (combined to ensure sufficient sample size), and the US). Further stratified risk analyses were conducted by sociodemographic and clinical variables, including the following: sex, age at baseline (years), body mass index (kg/m²), and time from blood draw to diagnosis (years). We also stratified by histological subtype (large cell, small cell, squamous cell, adenocarcinoma, other, and unknown or missing). Heterogeneity of these stratified estimates was evaluated using the likelihood ratio test of the interaction terms between hsCRP and each covariate.

To evaluate if circulating hsCRP concentration combined with self reported smoking information (CRP model) could improve discrimination between current smokers at high and low risk of lung cancer compared with self reported smoking information alone (base model), we calculated the area under the receiver operating characteristic curve (AUC) for each model. Self reported smoking models included smoking status; number of cigarettes, cigars, and pipes per day; and duration of smoking (number of years participant regularly smoked cigarettes, pipes, or cigars). Both cigars and pipes per day and smoking duration were modelled using restricted cubic splines with 3 degrees of freedom. These models were fitted to data from current smokers. We further fitted these models restricting the analysis to cases diagnosed within the first two years of follow-up and their matched controls (time from blood draw to diagnosis of two years or less).

All statistical analyses were conducted using R version 3.4.2.¹⁵

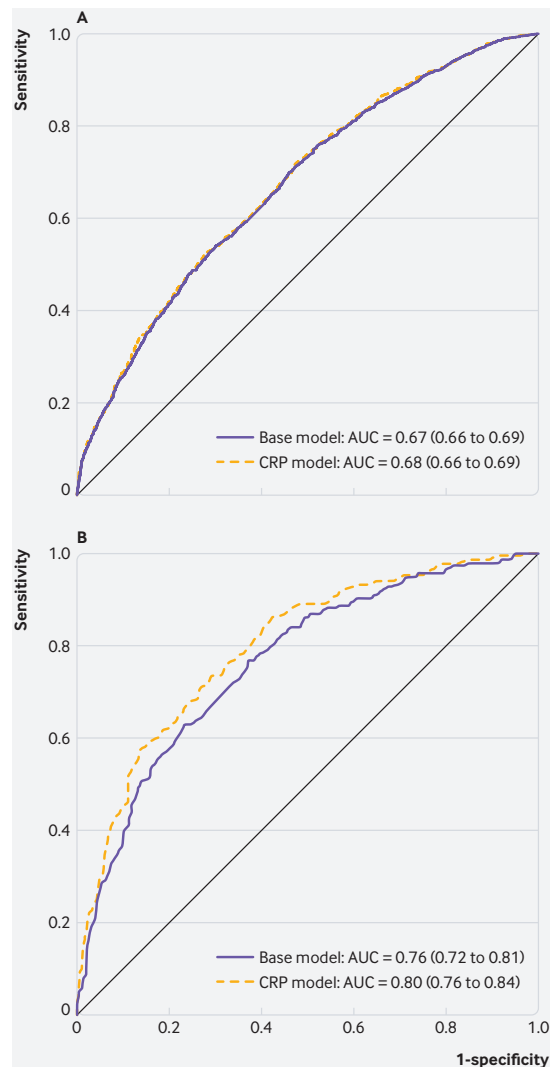


Fig 4 | Current smokers A overall (n=2199 case-control pairs) and B with time from blood draw to diagnosis ≤ 2 years (n=224 case-control pairs)

Patient and public involvement

No patients were involved in setting the research question or the outcome measures, nor were they involved in developing plans for recruitment, design, or implementation of the study. No patients were asked to advise on interpretation or writing up of results.

Results

Table 1 shows that our study sample included 5299 incident lung cancer cases and 5299 individually matched controls. Overall, slightly more participants were male (54%). Participants from cohorts in Asia and Europe and Australia were also predominantly male (69% and 58%, respectively). Current smokers accounted for nearly half of the overall study sample (47%, 2496 case-control pairs), with former and never smokers contributing approximately one quarter each (former 28%, 1498 case-control pairs; never 25%, 1305 case-control pairs). Median age at cohort recruitment was 60 years (table 1). Cases

and controls had similar characteristics, on average, except for body mass index, for which a smaller proportion of cases had body mass index greater than 25 kg/m². Circulating cotinine showed considerable variability among self reported current smokers, whereas most never and former smokers did not have detectable cotinine concentrations (supplementary materials, fig 1).

Table 2 shows that the median time between blood draw and lung cancer diagnosis for cases was 6.8 years. Table 2 shows that most lung cancer cases, overall and by region, were diagnosed with adenocarcinoma, followed by squamous cell, small cell, and large cell carcinomas. Overall, 38% of cancers in the sample were adenocarcinomas (43% of those cancers diagnosed in the US, compared with 35% for Asia and 34% for Europe and Australia).

Table 3 shows that higher hsCRP concentration was positively associated with the overall risk of lung cancer (odds ratio 1.05, 95% confidence interval 1.03 to 1.08, $P < 0.001$ for trend). Associations between hsCRP concentration and the risk of lung cancer were slightly stronger in models without adjustment for circulating cotinine (supplementary materials, table 1). Figure 1 shows that the association was most apparent for current (odds ratio 1.09, 95% confidence interval 1.05 to 1.13) and former smokers (1.09, 1.04 to 1.14). We did not observe a positive association for never smokers (0.95, 0.91 to 1.00; fig 1). Figure 1 shows that the positive association between hsCRP concentration and the risk of lung cancer was stronger for patients who were diagnosed in the first two years of follow-up (odds ratio 1.21, 95% confidence interval 1.13 to 1.29, $P < 0.01$ for interaction). There was also some indication that the association was stronger for participants in the less than high school education group, though there was little statistical evidence for heterogeneity, and this is likely driven by the greater proportion of current smokers in this group (supplementary materials, table 2).

Further stratified risk analyses showed that the association between hsCRP concentration and the risk of lung cancer differed by histological subtype ($P < 0.01$ for interaction for overall risk of lung cancer, fig 1; $P = 0.15$ for interaction for current smokers, fig 2; and $P < 0.01$ for former smokers, fig 3). For instance, although we observed a strong and consistent association between hsCRP concentration and the risk of squamous cell lung cancer among current (odds ratio 1.16, 95% confidence interval 1.08 to 1.24, fig 2) and former (1.15, 1.02 to 1.28, fig 3) smokers, no corresponding association was observed for adenocarcinoma among current (1.03, 0.96 to 1.10, fig 2) and former (0.98, 0.91 to 1.05, fig 3) smokers.

Figure 4A shows that for current smokers overall, combining hsCRP concentration and self reported smoking information into an integrated model (CRP model) did not improve discriminative performance when compared with the base model, which only included self reported smoking variables (AUC_{CRP model} 0.68, 95% confidence interval 0.66 to 0.69;

$AUC_{\text{Base model}} = 0.67$, 95% confidence interval 0.66 to 0.69). Figure 4B shows that for current smokers with a time from blood draw to diagnosis of two years or less, the CRP model did provide further risk discriminative information ($AUC_{\text{CRP model}} = 0.80$, 95% confidence interval 0.76 to 0.84) compared with self reported smoking alone ($AUC_{\text{Base model}} = 0.76$, 95% confidence interval 0.72 to 0.81).

Discussion

We conducted a comprehensive analysis of the relation between circulating hsCRP concentration and the risk of lung cancer by using prediagnostic samples from 20 prospective cohorts in the Lung Cancer Cohort Consortium. Former and current smokers with higher hsCRP concentrations had an increased risk for some histological subtypes of lung cancer, but not for adenocarcinoma. We observed a substantial association between hsCRP concentration and the risk of lung cancer in the first two years of follow-up.

Interpretation and implications

Unresolved chronic inflammation can generate reactive oxygen species and reactive nitrogen species that promote tumour growth through angiogenesis and cell proliferation.¹⁶ Given our finding of a weak and inconsistent association between hsCRP concentration and the risk of lung cancer in the longer term (>2 years after blood draw), systemic inflammation does not seem to be a likely driver of early stage lung cancer, or hsCRP concentration might not be capturing the risk, or both. In turn, the etiological role of inflammation in the development of lung carcinogenesis remains debated.^{17 18}

As chronic inflammation could arise owing to an immune response to tobacco smoke exposure,¹⁹ and considering the lack of association we observed for never smokers, residual confounding by smoking exposure could explain some of the associations we observed for the period beyond two years from blood draw. This interpretation would also be in line with our observation of higher hsCRP concentration being associated with histological subtypes most strongly associated with tobacco smoking, in contrast with the lack of association we observed for adenocarcinoma. The histological types that are strongly driven by tobacco smoke exposure will be more susceptible to residual confounding by smoking than adenocarcinoma, for which the risk increase by smoking is smaller.²⁰

In stratified analysis by time from blood draw, we observed a stronger positive association between hsCRP concentration and the risk of lung cancer in the first two years of follow-up, particularly for current smokers. This result suggests that higher hsCRP concentrations could be indicative of the presence of preclinical disease state, as opposed to being a causal risk factor for lung cancer. If hsCRP concentration is indicative of a preclinical disease state, it is natural to consider it as an addition to smoking-based risk factors for screening eligibility. Our risk discrimination

analysis—in which we found no improvement in discrimination overall and a small improvement for diagnoses in the first two years of follow-up—suggests that hsCRP concentration alone is unlikely to improve selection of patients for lung cancer screening. Further, given the lack of association between hsCRP concentration and the risk of lung adenocarcinoma, it would not be appropriate to use clinical CRP tests to rule out the presence of lung cancer during diagnostic work-up of patients who are symptomatic.

Strengths and weaknesses

This study has several strengths, including the use of prediagnostic assays of hsCRP from a large and diverse study population of individually matched case-control pairs within 20 prospective cohorts from several regions around the world. The large study sample allowed for robust risk analyses across all smoking status categories, and we were further able to adjust for circulating cotinine concentrations—an objective measure of recent tobacco exposure. Never and former smokers were oversampled allowing for well powered smoking-stratified risk analyses. Our 1305 never smoker case-control pairs make this the largest prospective risk biomarker study for lung cancer in never smokers. These patients who were never smokers represent an increasingly important subgroup that previous studies were underpowered to evaluate.^{6 21 22}

Our study was limited by the use of hsCRP measurements from one time point for each patient. Individual repeated samples would have been particularly useful for better evaluation of circulating hsCRP concentrations in the years leading up to a lung cancer diagnosis.

Conclusions

Former and current smokers with higher hsCRP concentrations had a greater risk of some histological subtypes of lung cancer, but not adenocarcinoma. We observed a stronger association between higher hsCRP concentration and the risk of lung cancer in the first two years of follow-up, indicating that circulating hsCRP concentrations might reflect a prediagnostic disease state as opposed to a causal risk for lung cancer.

AUTHOR AFFILIATIONS

¹Genetic Epidemiology Group, International Agency for Research on Cancer, Lyon, France

²Department of Epidemiology and Biostatistics, Imperial College London, Norfolk Place, London W2 1PG, UK

³KG Jebsen Center for Genetic Epidemiology, Department of Public Health and Nursing, Faculty of Medicine and Health Sciences, Norwegian University of Science and Technology, Trondheim, Norway

⁴Cancer Epidemiology and Intelligence Division, Cancer Council Victoria, Melbourne, VIC, Australia

⁵Centre for Epidemiology and Biostatistics, Melbourne School of Population and Global Health, The University of Melbourne, Parkville, VIC, Australia

⁶HUNT Research Centre, Department of Public Health and Nursing, Norwegian University of Science and Technology, Levanger, Norway

⁷Department of Medical Biosciences, Umeå University, Umeå, Sweden

⁸Bevital AS, Bergen, Norway

⁹Division of Epidemiology, Department of Medicine, Vanderbilt Epidemiology Center and Vanderbilt-Ingram Cancer, Vanderbilt

University School of Medicine, Nashville, TN, USA
¹⁰Department of Obstetrics and Gynecology, New York University School of Medicine, New York, NY, USA
¹¹Department of Population Health and Environmental Medicine, New York University School of Medicine, New York, NY, USA
¹²Division of Cancer Epidemiology and Genetics, National Cancer Institute, National Institutes of Health, Bethesda, MD, USA
¹³Department of Epidemiology, Harvard TH Chan School of Public Health, Boston, MA, USA
¹⁴Division of Aging, Department of Medicine, Brigham and Women's Hospital, Boston, MA, USA
¹⁵Division of Preventive Medicine, Department of Medicine, Brigham and Women's Hospital, Boston, MA, USA
¹⁶Boston VA Medical Center, Boston, MA, USA
¹⁷UPMC Hillman Cancer Center, University of Pittsburgh, USA
¹⁸Department of Epidemiology, Graduate School of Public Health, University of Pittsburgh, USA
¹⁹George W Comstock Center for Public Health Research and Prevention Health Monitoring Unit, Department of Epidemiology, Johns Hopkins University Bloomberg School of Public Health, Baltimore, MD, USA
²⁰Epidemiology Program, Cancer Research Center of Hawaii, University of Hawaii, Honolulu, HI, USA
²¹Division of Cancer Epidemiology and Genetics, National Cancer Institute, NIH, Bethesda, MD, USA
²²Department of Clinical Science, University of Bergen, Bergen, Norway
²³Laboratory of Clinical Biochemistry, Haukeland University Hospital, Bergen, Norway
²⁴Division of Public Health Sciences Fred Hutchinson Cancer Research Center, Seattle, WA, USA
²⁵Epidemiology Research Program, American Cancer Society, Atlanta, GA, USA
²⁶Channing Division of Network Medicine, Department of Medicine, Brigham and Women's Hospital and Harvard Medical School, Boston, MA, USA
²⁷State Key Laboratory of Oncogene and Related Genes and Department of Epidemiology, Shanghai Cancer Institute, Renji Hospital, Shanghai Jiaotong University School of Medicine, Shanghai, China
²⁸Duke-NUS Medical School Singapore, Singapore
²⁹Health Promotion Sciences, Mel and Enid Zuckerman College of Public Health, University of Arizona, Tucson, AZ, USA
³⁰Department of Clinical Science in Malmö, Lund University, Malmö, Sweden
³¹Pathology, Department of Clinical Sciences Lund, Laboratory Medicine Region Skåne, Lund University, Lund, Sweden
³²Department of Nutrition, Harvard TH Chan School of Public Health, Boston, MA, USA
³³Department of Epidemiology, Richard M Fairbanks School of Public Health, Indiana University, Indianapolis, IN, USA
³⁴Melvin and Bren Simon Cancer Center, Indiana University, Indianapolis, IN, USA
³⁵Department of Radiation Sciences, Umeå University, Umeå, Sweden
³⁶Italian Institute for Genomic Medicine (IIGM), Torino, Italy
³⁷Centre de Recherche en Epidemiologie et Santé des Populations (CESP) UMR1018 Inserm, Facultés de Médecine Université Paris-Saclay, UPS, UVSQ, Villejuif, France

We thank all cohorts and all cohort participants for making this research possible. The Women's Health Initiative (WHI) program is funded by the National Heart, Lung, and Blood Institute, National Institutes of Health, US Department of Health and Human Services through contracts HHSN268201600018C, HHSN268201600001C, HHSN268201600002C, HHSN268201600003C, and HHSN268201600004C. The WHI authors thank the WHI investigators and staff for their dedication, and the study participants for making the program possible. A full list of WHI investigators can be found in the supplementary materials. The Health Professionals Follow-up Study and NHS authors would like to thank the participants. Staff of the Health Professionals Follow-up Study and Nurses' Health Study thank the cohort participants and staff for their valuable contributions as well as the following state cancer registries for their help: AL, AZ, AR, CA, CO, CT, DE, FL, GA, ID, IL, IN, IA, KY, LA, ME, MD, MA, MI, NE, NH, NJ, NY, NC, ND, OH, OK, OR, PA, RI, SC, TN, TX, VA, WA, WY. The Multiethnic Cohort Study cohort acknowledges partial funding from National Institutes of Health grant U01 CA164973. Cancer incidence data for the CLUE cohort were provided by the Maryland Cancer Registry, Center for Cancer Surveillance and Control, Maryland Department of Health, 201 W Preston Street, Room 400, Baltimore,

MD 21201. The CLUE investigators acknowledge the State of Maryland, the Maryland Cigarette Restitution Fund, and the National Program of Cancer Registries of the Centers for Disease Control and Prevention for the funds that support the collection and availability of the cancer registry data.

Contributors: DCM and TLL contributed jointly to the study. Majand PB organised the Lung Cancer Cohort Consortium study. DCM, TLL, and FG conducted the data analysis. Data was interpreted by all authors. TLL, DCM and Maj wrote the first draft of the manuscript. All authors read and approved the final manuscript. DCM and Maj had full access to the data in the study and can take responsibility for the integrity of the data and the accuracy of the data analysis. DCM and Maj are guarantors of the article. The corresponding author attests that all listed authors meet authorship criteria and that no others meeting the criteria have been omitted.

Funding: The Lung Cancer Cohort Consortium was supported by Grant National Institutes of Health/National Cancer Institute (no 1U01CA155340-01) and The National Health and Medical Research Council (Grant ID: 1050198). DCM receives funding from a Cancer Research UK Population Research Fellowship. This work was supported by The Research Council of Norway (grant no 267776/H10). The work undertaken by TLL for this paper was conducted during a postdoctoral placement at the International Agency for Research on Cancer, within the framework of an agreement between the Research Council of Norway and the Norwegian University of Science and Technology. The funding organisations had no role in design and conduct of the study; collection, management, analysis, and interpretation of the data; preparation, review, or approval of the manuscript.

Competing interests: All authors have completed the ICMJE uniform disclosure form at www.icmje.org/coi_disclosure.pdf and declare: no support from any organisation for the submitted work; no financial relationships with any organisations that might have an interest in the submitted work in the previous three years; no other relationships or activities that could appear to have influenced the submitted work.

Ethical approval: The protocol of the Lung Cancer Cohort Consortium was approved by the institutional review board of the International Agency for Research on Cancer. The recruitment, data collection, and follow-up of the participating cohorts was approved by local institutional review boards.

Data Sharing: No additional data are available.

The study guarantors (DCM and Maj) affirm that this manuscript is an honest, accurate, and transparent account of the study being reported; that no important aspects of the study have been omitted; and that any discrepancies from the study as planned have been explained.

This is an Open Access article distributed in accordance with the terms of the Creative Commons Attribution (CC BY 4.0) license, which permits others to distribute, remix, adapt and build upon this work, for commercial use, provided the original work is properly cited. See: <http://creativecommons.org/licenses/by/4.0/>.

- 1 Stewart BW, Wild CP, eds. *World Cancer Report 2014*. International Agency for Research on Cancer, 2014.
- 2 World Health Organization. Cancer Fact Sheet. <http://www.who.int/mediacentre/factsheets/fs297/en/>.
- 3 Munn LL. Cancer and inflammation. *Wiley Interdiscip Rev Syst Biol Med* 2017;9:e1370. doi:10.1002/wsbm.1370
- 4 Kushner I, Rzewnicki D, Samols D. What does minor elevation of C-reactive protein signify? *Am J Med* 2006;119:166.e17-28.
- 5 Leuzzi G, Galeone C, Gisabella M. et al. Baseline C-reactive protein level predicts survival of early-stage lung cancer: evidence from a systematic review and meta-analysis. *Tumori* 2016;102:441-9. doi:10.5301/tj.5000522
- 6 Shiels MS, Katki HA, Hildesheim A. et al. Circulating Inflammation Markers, Risk of Lung Cancer, and Utility for Risk Stratification. *J Natl Cancer Inst* 2015;107:djv199. doi:10.1093/jnci/djv199
- 7 Shiels MS, Shu XO, Chaturvedi AK. et al. A prospective study of immune and inflammation markers and risk of lung cancer among female never smokers in Shanghai. *Carcinogenesis* 2017;38:1004-10. doi:10.1093/carcin/bgx075
- 8 Takemura Y, Ishida H, Inoue Y. Utilization of common inflammatory markers in new, symptomatic, primary care outpatients based on their cost-effectiveness. *Clin Chem Lab Med* 2003;41:668-74. doi:10.1155/CCLM.2003.101
- 9 Brouwer N, van Pelt J. Validation and evaluation of eight commercially available point of care CRP methods. *Clin Chim Acta* 2015;439:195-201. doi:10.1016/j.cca.2014.10.028
- 10 Rebnord IK, Hunskaar S, Gjesdal S, Hetlevik Ø. Point-of-care testing with CRP in primary care: a registry-based observational study from

- Norway. *BMC Fam Pract* 2015;16:170. doi:10.1186/s12875-015-0385-8
- 11 Fanidi A. et al. Circulating Folate, Vitamin B6 and Methionine in relation to Lung Cancer Risk in the Lung Cancer Cohort Consortium (LC3). *J Natl Cancer Inst* 2017.
 - 12 Meyer K, Ueland PM. Targeted quantification of C-reactive protein and cystatin c and its variants by immuno-MALDI-MS. *Anal Chem* 2014;86:5807-14. doi:10.1021/ac500704y
 - 13 Midttun Ø, Hustad S, Ueland PM. Quantitative profiling of biomarkers related to B-vitamin status, tryptophan metabolism and inflammation in human plasma by liquid chromatography/tandem mass spectrometry. *Rapid Commun Mass Spectrom* 2009;23:1371-9. doi:10.1002/rcm.4013
 - 14 Midttun O, Townsend MK, Nygård O. et al. Most blood biomarkers related to vitamin status, one-carbon metabolism, and the kynurenine pathway show adequate preanalytical stability and within-person reproducibility to allow assessment of exposure or nutritional status in healthy women and cardiovascular patients. *J Nutr* 2014;144:784-90. doi:10.3945/jn.113.189738
 - 15 R Core Team. *R: A language and environment for statistical computing*. Foundation for Statistical Computing, 2017.
 - 16 Beatty PL, Cascio S, Finn OJ. Inflammation and Cancer. In: Srivastava S, ed. *Biomarkers in Cancer Screening and Early Detection*. John Wiley & Sons, Ltd, 2017. doi:10.1002/9781118468869.ch4.
 - 17 Cruz SM, Balkwill FR. Inflammation and cancer: advances and new agents. *Nat Rev Clin Oncol* 2015;12:584-96. doi:10.1038/nrclinonc.2015.105
 - 18 Kundu JK, Surh YJ. Inflammation: gearing the journey to cancer. *Mutat Res* 2008;659:15-30. doi:10.1016/j.mrev.2008.03.002
 - 19 Shiels MS, Katki HA, Freedman ND. et al. Cigarette smoking and variations in systemic immune and inflammation markers. *J Natl Cancer Inst* 2014;106:dju294. doi:10.1093/jnci/dju294
 - 20 Lin KF, Wu HF, Huang WC, Tang PL, Wu MT, Wu FZ. Propensity score analysis of lung cancer risk in a population with high prevalence of non-smoking related lung cancer. *BMC Pulm Med* 2017;17:120. doi:10.1186/s12890-017-0465-8
 - 21 Shiels MS, Pfeiffer RM, Hildesheim A. et al. Circulating inflammation markers and prospective risk for lung cancer. *J Natl Cancer Inst* 2013;105:1871-80. doi:10.1093/jnci/djt309
 - 22 Pine SR, Mechanic LE, Enewold L. et al. Increased levels of circulating interleukin 6, interleukin 8, C-reactive protein, and risk of lung cancer. *J Natl Cancer Inst* 2011;103:1112-22. doi:10.1093/jnci/djr216

Supplementary materials: Supplementary materials, tables 1 and 2, and figure 1

Supplementary materials: Women's Health Initiative investigators