

Temperature measured at the axilla compared with rectum in children and young people: systematic review

Jean V Craig, Gillian A Lancaster, Paula R Williamson, Rosalind L Smyth



Institute of Child Health, Alder Hey Children's Hospital, Liverpool L12 2AP

Jean V Craig
research associate

Rosalind L Smyth
professor of paediatric medicine

Department of Mathematical Sciences, University of Liverpool, Liverpool L69 3BX
Gillian A Lancaster
lecturer in medical statistics

Paula R Williamson
lecturer in medical statistics

Correspondence to:
R L Smyth
r.l.smyth@liv.ac.uk

BMJ 2000;320:1174-8

Abstract

Objective To evaluate the agreement between temperature measured at the axilla and rectum in children and young people.

Design A systematic review of studies comparing temperature measured at the axilla (test site) with temperature measured at the rectum (reference site) using the same type of measuring device at both sites in each patient. Devices were mercury or electronic thermometers or indwelling thermocouple probes.

Studies reviewed 40 studies including 5528 children and young people from birth to 18 years.

Data extraction Difference in temperature readings at the axilla and rectum.

Results 20 studies (n = 3201 (58%) participants) had sufficient data to be included in a meta-analysis. There was significant residual heterogeneity in both mean differences and sample standard deviations within the groups using different devices and within age groups. The pooled (random effects) mean temperature difference (rectal minus axillary temperature) for mercury thermometers was 0.25°C (95% limits of agreement -0.15°C to 0.65°C) and for electronic thermometers was 0.85°C (-0.19°C to 1.90°C). The pooled (random effects) mean temperature difference (rectal minus axillary temperature) for neonates was 0.17°C (-0.15°C to 0.50°C) and for older children and young people was 0.92°C (-0.15°C to 1.98°C).

Conclusions The difference between temperature readings at the axilla and rectum using either mercury or electronic thermometers showed wide variation across studies. This has implications for clinical situations where temperature needs to be measured with precision.

Introduction

The presence of fever in children and young people affects the decisions of parents and clinicians. Parents may take vigorous steps to lower their child's temperature and will commonly seek medical advice,¹ and clinicians may carry out investigations and interventions, including antipyretics, physical cooling measures, antibiotics, and admission to hospital.² Measuring temperature in children can be difficult, especially when they are uncooperative or restless. Measurement of rectal temperature is frequently preferred over other ways of taking temperature but may not be acceptable to children and parents.² The axilla is a safe and accessible site but concerns have been raised about its accuracy.^{3,4} We therefore systematically reviewed the agreement between temperature measured at the axilla and temperature measured at the rectum.

Methods

Search strategy

Studies were identified by a single reviewer (JVC) through electronic searches (see website) of Medline 1966 to October 1999, CINAHL 1982 to August 1999, the British Nursing Index June 1999, the *Cochrane Library* (issue 3, 1999), and the journals database of the Royal College of Nursing 1985-99. The National Research Register (issue 2, 1999) was searched for any unpublished studies, and conference abstracts were accessed through the BIDS index to Scientific and Technological Proceedings (1982-99). Authors of studies and suppliers of clinical thermometers were asked to provide details of other studies.

Inclusion criteria

Two reviewers (JVC and Catherine Lees) independently judged the studies for eligibility according to pre-determined criteria. We included: method comparison studies where temperature measured at the axilla (test site) was compared with temperature measured at the rectum (reference site) in the same individual; studies of children and adolescents from birth to 18 years; and studies using mercury or electronic thermometers or thermocouple probes.

We excluded children with hypothermia (rectal temperature less than 35.0°C), preterm infants (less than 37 weeks' gestational age), studies using different types of devices at the two sites, and studies where the rectal mercury thermometer was read before three minutes had elapsed (some authors were contacted to clarify placement times).^{5,6}

Data extraction and quality assessment

Two reviewers (JVC and Catherine Lees) independently assessed studies for methodological quality. As there is no validated scoring system for assessing the methodological quality of method comparison studies, we modified a previously published checklist that had been developed for evaluating studies of diagnostic tests (see box).⁷ There was initial disagreement on occasions. This was resolved by discussion. Two reviewers (JVC and GAL) independently extracted data. When the outcome data were not provided, we asked the authors for the mean difference and standard deviation of the difference between the temperature measured at the axilla and rectum or, where this could not be provided, for the anonymised raw data. Where outcome data were missing, but the mean and standard deviation of the measurements were reported for the two sites separately with a correlation coefficient, we calculated the mean and standard deviation of the differences from these data. Correlation coefficients were not reported in several studies so we estimated these from similar studies.

Data analysis

We calculated the upper and lower 95% limits of agreement for each study.⁸ Where the standard



Search terms, references, and eligible studies with missing or inappropriate data appear on the BMJ's website

Criteria and rationale for assessing methodological quality of method comparison studies^{7*}

- Were thermometers calibrated?[†]
Off the shelf thermometers have been shown to be inaccurate by at least 0.1°C^{4 6}
- Was the placement time of the thermometer given?[†]
Mercury thermometers read before stabilisation underestimate body temperature
- Were all tests carried out concurrently or immediately sequentially?[†]
Where there is a delay between the two readings, any difference in the results could potentially be attributed to a change in actual body temperature
- Were the test and reference standard measured independently (blind) of each other?
- Was the second reading taken before any interventions were given?
Avoids treatment paradox
- Were both tests carried out in all children regardless of the first reading?
Avoids verification bias

*Criteria were graded as yes, no, or not stated.

[†]Additional criteria specific to temperature measurement.

deviation of the differences was estimated with a correlation coefficient from a similar study, we performed a sensitivity analysis including and excluding these studies. In a meta-analysis of randomised controlled trials, a pooled estimate of the relative treatment effect is of interest. For method comparison studies, systematic error (bias) and random error (limits of agreement) are of interest. To obtain a pooled estimate of bias, we used the usual Mantel-Haenszel weighted approach to combine individual study estimates of the mean difference. To obtain pooled estimates of the limits of agreement, we first obtained a pooled estimate of the standard deviation of individual differences and then combined this with the pooled estimate of the mean difference. We hypothesised a priori that type of thermometer, duration of placement time at the axilla for mercury thermometers, and age may be sources of heterogeneity, and we performed subgroup analyses based on these characteristics. Homogeneity of mean differences and standard deviations of differences across studies were evaluated with the standard large sample test.⁹ In the presence of significant residual heterogeneity, we calculated pooled estimates of the mean difference and the standard deviation of the individual differences using a random effects approach.⁹ From the combination of these estimates it was possible to calculate pooled estimates of the limits of agreement using a random effects approach. The techniques are described elsewhere (P R Williamson, personal communication).

Results

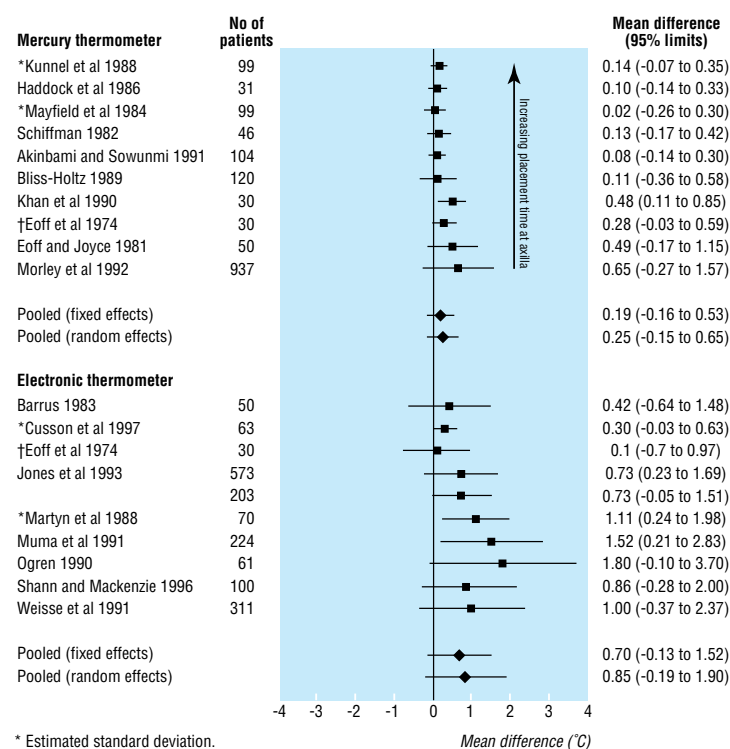
Description of studies and methodological quality

Overall, 37 papers (34 in English) containing 40 method comparison studies including 5528 children and young people were suitable for inclusion. Disagreement about study inclusion on six occasions was resolved through discussion. Three studies were

reported in two publications.¹⁰⁻¹⁵ Three publications were each considered to contain two studies because either two different target populations were included and the results for each reported separately^{16 17} or two different measuring devices were studied in the same children.¹⁸ The table gives a description of the studies and dimensions of methodological quality. Disagreement between reviewers on the details of seven studies was resolved by discussion.

Outcome data were available from the article or author or were calculated for 16 studies (2870 (52%) participants). We estimated the standard deviation of the differences in temperature measurements for four studies (331 (6%)) (table). The analysis and conclusions with and without the data from these studies were similar and are included in the results.

Mean axillary temperature was always lower than mean rectal temperature. Significant heterogeneity was found between mean differences within device groups (mercury thermometer: $\chi^2 = 1305$, $df = 9$, $P < 0.0001$; electronic thermometer: $\chi^2 = 959$, $df = 9$, $P < 0.0001$). Significant heterogeneity was found between standard deviations within device groups (mercury: $\chi^2 = 943$, $df = 9$, $P < 0.0001$; electronic: $\chi^2 = 519$, $df = 9$, $P < 0.0001$). The pooled (random effects) mean temperature difference (rectal minus axillary temperature) for mercury thermometers was 0.25°C (95% limits of agreement -0.15°C to 0.65°C) and for electronic thermometers was 0.85°C (-0.19°C to 1.90°C) (fig 1). Studies with mercury thermometers were ordered according to placement time at the axilla (longest to shortest time), and there was a tendency towards improved accuracy as placement time increased.



* Estimated standard deviation.

[†] Same children in both studies.

Fig 1 Mean temperature difference (rectal minus axillary temperature) and 95% limits of agreement by measuring device

Summary of included studies

Authors	No of patients	Age range (mean)	Population	Calibration	Rectal device, placement time, and depth	Axilla device (placement time)	Readings taken	Intervention between readings
Mercury versus mercury thermometer								
Akinbami and Sowunmi 1991 ^{w1}	104	0-48 hours	Neonates in nursery	No	Mercury read at stabilisation (>7 minutes), 2-3 cm	Mercury read at stabilisation (>7 minutes)	Concurrently	No
Bliss-Holtz 1989 ^{w2}	120	12-48 hours	Infants on radiant warmers	Yes	Mercury read at stabilisation (3-5 minutes), 2.5 cm	Mercury read at stabilisation (1-7 minutes)	Sequentially	No
Eoff et al 1974 ^{w3}	30	1-9 days (3.5 days)	Neonates in nursery	Not stated	Mercury read at 5 minutes, 1.5 cm	Mercury read at 5 minutes	Sequentially	No
Eoff and Joyce 1981 ^{w4}	50	1-6 years	Children in hospital	Not stated	Mercury read at 3 minutes, depth not stated	Mercury read at 5 minutes	Sequentially	No
Haddock et al 1986 ^{w5}	31	24-72 hours	Newborn infants	No	Mercury read at stabilisation (1-6 minutes), 2 cm	Mercury read at stabilisation (3-12 minutes)	Sequentially	No
Khan et al 1990 ^{w6}	30	0-28 days (59 hours)	Neonates in nursery	No	Mercury read at stabilisation (1-5 minutes), 2 cm	Mercury read at stabilisation (1-5 minutes)	Concurrently	No
Kunnel et al 1988 ^{w7*}	99	1-4 days	Neonates in nursery	Yes	Mercury read at optimal temperature over 15 minutes, 2 cm	Mercury read at optimal temperature over 15 minutes	Concurrently	No
Mayfield et al 1984 ^{w8*}	99	1-10 days (4 days)	Newborn infants in nursery	Yes	Mercury read at stabilisation (1-10 minutes), 2 cm	Mercury read at stabilisation (2-10 minutes)	Concurrently	No
Morley et al 1992 ^{w9}	937	0-6 months	Babies at home and in hospital (11% febrile)	Not stated	Mercury read at ≥1 minute or at stabilisation, 3 cm	Mercury read at ≥3 minutes	Not stated	Not stated
Schiffman 1982 ^{w10}	46	1 day (3 hours and 43 minutes)	Neonates in nursery	Yes	Mercury (10 minutes), depth not stated	Mercury read at 10 minutes	Sequentially	No
Electronic versus electronic thermometer								
Barrus 1983 ^{w11}	50	2-6 years	Children in hospital paediatric unit	Yes	Electronic, mode and depth not stated	Electronic, mode not stated	Sequentially	No
Cusson et al 1997 ^{w12*}	63	>1 hour	Newborn infants in nursery (22% in incubators, 32% on radiant warmers)	Yes	Electronic, predictive mode, 2.5 cm	Electronic, predictive mode	Sequentially	No
Eoff et al 1974 ^{w3}	30	1-9 days (3.5 days)	Neonates in nursery	Not stated	Electronic telethermometer, depth not stated (5 minutes)	Electronic telethermometer, read at 5 minutes	Sequentially	No
Jones et al 1993 ^{w13}	573 (sick) and 203 (healthy)	<5 years in both groups	Sick children in outpatient clinic (31% febrile) and healthy children at home	Not stated in either study	In both groups: electronic, mode not stated, 2.3 cm	In both groups: electronic, mode not stated	Concurrently in both groups	No in both groups
Martyn et al 1988 ^{w14*}	70	1-5 years (33.2 months)	Well children in clinic (31% febrile)	Yes	Electronic, mode and depth not stated	Electronic, mode not stated	Sequentially	No
Muma et al 1991 ^{w15}	224	<3 years (12.4 months)	Infants and children in casualty department (39% febrile)	Yes	Electronic, mode and depth not stated	Electronic, mode not stated	Sequentially	Not stated
Ogren 1990 ^{w16}	61	0-14 years, most <3 years	Children in casualty department (61% febrile)	No	Electronic read at beep, mode and depth not stated	Electronic read at beep, mode not stated	Not stated	Not stated
Shann and Mackenzie 1996 ^{w17}	100	0-14 years	Children in hospital	Yes	Electronic read at one minute, mode not stated, 2, 3, or 4 cm (according to age)	Electronic read at one minute, mode not stated	Sequentially	No
Weisse et al 1991 ^{w18}	311	0-48 months	Children in inpatient and outpatient settings (21% febrile)	Yes	Electronic read at beep, mode not stated, 2-3 cm	Electronic read at beep, mode not stated	Sequentially	Not stated

*Studies in which standard deviation of differences in temperature was estimated.

We grouped neonates separately from other children (fig 2). Significant heterogeneity was found between mean differences within the groups (neonates: $\chi^2 = 269$, $df = 9$, $P < 0.0001$; older children and young people: $\chi^2 = 548$, $df = 9$, $P < 0.0001$). Significant heterogeneity was found between standard deviations within age groups (neonates: $\chi^2 = 111$, $df = 9$, $P < 0.0001$; older children and young people: $\chi^2 = 169$, $df = 9$, $P < 0.0001$). The pooled (random effects) mean temperature difference (rectal minus axillary temperature) for neonates was 0.17°C (−0.15°C to 0.50°C) and for older children and young people was 0.92 (−0.15 to 1.98).

Of the 20 eligible studies with insufficient data (see table A on website), nine studied neonates (mercury thermometer (four studies), electronic thermometer (four), indwelling thermocouple probe (one)), and 11 studied older children and young people (mercury thermometer (three), electronic thermometer (five), and indwelling thermocouple probes (three)).

Discussion

We found large mean differences and wide limits of agreement between temperatures measured at the axilla and those measured at the rectum. Determining febrile status is an important part of the assessment of children and young people who are unwell. Accurate measurement of temperature is required in certain clinical situations or patient groups. In neutropenic patients the decision to commence antibiotics may be made on the basis of an accurate measurement of temperature.¹⁹ In neonates accurate measurement of temperature is important for ensuring a thermoneutral state.²⁰ It is believed that rectal temperature can be estimated by adding 1°C to the temperature measured at the axilla. The wide range in the mean differences we have detected suggests that this is not the case.

In general, limits of agreement were narrower when mercury thermometers were used, placement

time of mercury thermometers was longer, and measurements were made in neonates. Further investigation by age was not possible because many studies reported only the age range. Electronic thermometers were used in only two studies of neonates. One showed narrow limits of agreement.²¹ The other, with wide limits of agreement, was the only study published before the 1980s, and a different device, the telethermometer, was used.¹⁸ Electronic thermometers were used in eight of the 10 studies of older children and young people. This may have confounded the comparison of mercury with electronic thermometers. In neonates, although agreement is better with longer placement times, this may be difficult to achieve. Young children may be less compliant when placement time is prolonged, which may affect accuracy.

Review methodology

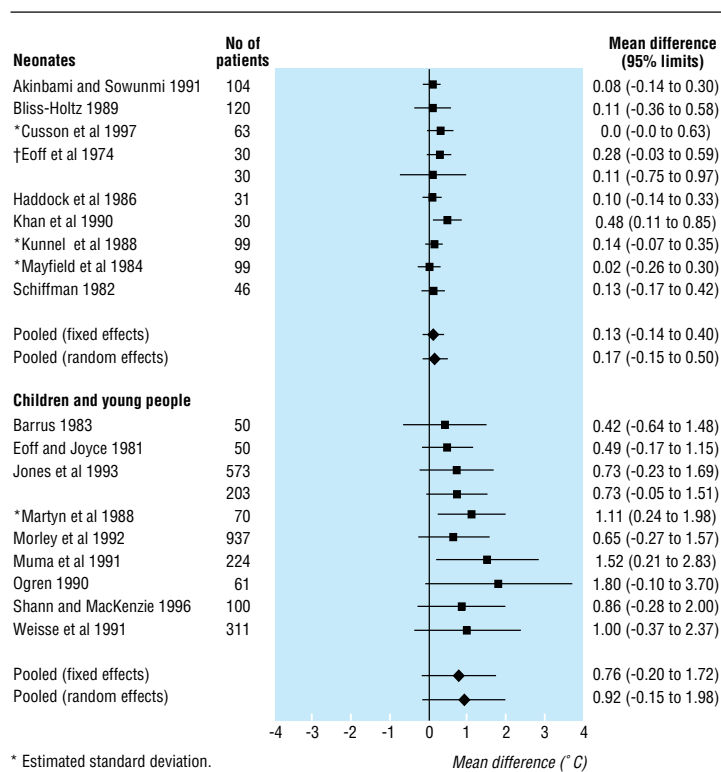
Although we used a sensitive search strategy to identify studies, we may not have identified relevant unpublished evidence. We cannot comment on the impact this may have had on our results because of lack of empirical evidence on publication bias for method comparison studies (P R Williamson, personal communication).

The design of most studies was limited to one measurement per site per participant. Lack of agreement may be caused by poor repeatability at either site. We were not able to look at within site variability to see how much it differed from between site variability as data on results for repeated measurements were not reported and no individual patient data were available. Six of the 20 studies gave the number of febrile children by their own definition (table), but no studies presented data separately to enable analysis of febrile children only. We did not find any evidence that systematic and random error varied by level of temperature.

Methods used in primary studies

Our results may have been influenced by methodological shortfalls in the primary studies. Verification bias was difficult to assess as selection of participants was not always clearly described. All studies seemed to take either convenience or random samples of children from a variety of settings. Seven studies gave specific exclusion criteria, based on clinical conditions. The rest gave no exclusion criteria. We defined verification bias to be the selecting out of participants on the basis of a temperature measurement. This was not evident in any study. There was no evidence of any effect of the quality criteria (see box) when results were subgrouped and factors examined univariately, but the number of studies in each subgroup was small.

Independent measurement of the reference standard and test was not attempted in any study.²² Blinding is likely to be an important methodological issue, especially when placement time is determined by the operator. This may occur when mercury thermometers are used or when electronic thermometers are used in monitor mode rather than predictive mode. In some sequential studies and in those where concurrent measurements were carried out, a different device (of the same type) was used at each site. Calibration is therefore important, even when new thermometers are



* Estimated standard deviation.

† Same children in both studies.

Fig 2 Mean temperature difference (rectal minus axillary temperature) and 95% limits of agreement by age

used.²³ Ten studies did not provide details of thermometer calibration before data collection.

When a thermometer is read before stabilisation, temperature is underestimated,²⁴ which may be another problem where placement time is at the discretion of the operator. Six out of 10 studies with mercury thermometers gave details about stabilisation. Mode or placement time was reported in two out of 10 studies with electronic thermometers. In a further two studies the thermometer was read when it beeped, and it is likely that predictive mode was used. Seven studies did not report the depth of placement of the rectal thermometer. In sequential studies the time lapse between the two readings was not always reported. The longer the delay between readings, the more likely there is a change in body temperature, which will affect the second reading.

We recommend that in future studies temperatures should be measured independently at each site in a consecutive series of eligible individuals. All thermometers should be calibrated. Details should be provided about placement time and depth (if appropriate), steps should be taken to ensure stabilisation, and the mode used in electronic thermometers should be stated. Temperature readings should be carried out concurrently or immediately sequentially and the time between measurements clearly documented. The minimum analysis that should be carried out is the Bland and Altman method⁸ giving plots and 95% limits of agreement. Studies involving replicated or repeated measurements should take this into account in the analysis.

What is already known on this topic

Numerous studies of methods for measuring temperature in children and young people have been carried out

Although the methods and results of the studies vary, there are concerns about the agreement between temperature measured at the axilla and temperature measured at the rectum

What this study adds

In children and young people temperature measured at the axilla does not agree sufficiently with temperature measured at the rectum to be relied on in clinical situations where accurate measurement is important

Variability in results was related to the age of the child and duration of placement time of the measuring device

Research is needed to identify whether sufficient accuracy can be achieved for measurement of temperature at the axilla in neonates

Future studies of temperature measurement in children should be more methodologically rigorous

Conclusions

We have shown that in children and young people the agreement between temperature measured at the axilla and temperature measured at the rectum is relatively low. This may prevent low grade fever from being detected and has important implications when body temperature needs to be measured with precision. Further research is needed to establish whether sufficient accuracy can be achieved by measuring temperature at the axilla in neonates. We identified several methodological weaknesses in the included studies, which may have affected the results.

We thank the authors who provided us with data from their studies and the reviewers for their helpful comments.

Contributors: JVC wrote the protocol, participated in the review process, and drafted and revised the paper; she will act as guarantor for the paper. GAL and PRW assisted in the design of

the study, the meta-analysis, and revising the final paper. GAL participated in the data extraction and data checking. Catherine Lees assisted in assessment of study inclusion and study quality. RLS conceived the idea, helped design the study, and assisted in drafting and revising the final paper. All authors commented on drafts of the paper.

Funding: JVC is supported by a grant from the Royal Liverpool Children's NHS Trust Endowment Funds.

Conflict of interest: None declared.

- Schmitt BD. Fever phobia: misconceptions of parents about fever. *Am J Dis Child* 1980;134:176-81.
- Thomas V, Andrea J, Gerhart A, Gocka I. National survey of pediatric fever management practices among emergency department nurses. *J Emerg Nurs* 1994;20:505-10.
- Keeley D. Taking infants' temperatures. *BMJ* 1992;304:931-2.
- Erickson RS, Woo TM. Accuracy of infrared ear thermometry and traditional temperature methods in young children. *Heart Lung* 1994;23:181-95.
- Haddock B, Vincent P, Merrow D. Axillary and rectal temperatures of full-term neonates: are they different? *Neonatal Network* 1986;5:36-40.
- Mayfield SR, Bhatia J, Nakamura KT, Rios GR, Bell EF. Temperature measurement in term and preterm neonates. *J Pediatr* 1984;104:271-5.
- Cochrane Methods Working Group on systematic review of screening and diagnostic tests: recommended methods. Checklist for studies of diagnostic accuracy. *Cochrane Library*, issue 3. Oxford: Update Software, 1996.
- Bland JM, Altman DG. Statistical methods for assessing agreement between two measures of clinical measurement. *Lancet* 1986;i:307-10.
- DerSimonian R, Laird N. Meta-analysis in clinical trials. *Controlled Clin Trials* 1986;7:177-88.
- Muma BK, Treloar DJ, Wurmlinger K, Peterson E, Vitae A. Comparison of rectal, axillary, and tympanic membrane temperatures in infants and young children. *Ann Emerg Med* 1991;20:41-4.
- Treloar D, Muma B. Comparison of axillary, tympanic membrane and rectal temperatures in young children. *Ann Emerg Med* 1988;17:435.
- Bliss Holtz J. Comparison of rectal, axillary, and inguinal temperatures in full-term newborn infants. *Nurs Res* 1989;38:85-7.
- Bliss Holtz J. Determining cold-stress in full-term newborns through temperature site comparisons. *Sch Inq Nurs Pract* 1991;5:113-23.
- Morley CJ, Hewson PH, Thornton AJ, Cole TJ. Axillary and rectal temperature measurements in infants. *Arch Dis Child* 1992;67:122-5.
- Morley CJ. Measuring infants' temperatures. *Midwives Chron Nurs Notes* 1992;105:26-9.
- Jones RJ, O'Dempsey TJ, Greenwood BM. Screening for a raised rectal temperature in Africa. *Arch Dis Child* 1993;69:437-9.
- Buntain WL, Pregler M, O'Brien PC, Lynn HB. Axillary versus rectal temperature: a comparative study. *J La State Med Soc* 1977;129:5-8.
- Eoff MJ, Meier RS, Miller C. Temperature measurement in infants. *Nurs Res* 1974;23:457-60.
- Hughes WT, Armstrong D, Body GP. Guidelines for the use of antimicrobial agents in neutropaenic patients with unexplained fever. *J Infect Dis* 1990;161:381-96.
- Keeling EB. Thermoregulation and axillary temperature measurements in neonates: a review of the literature. *Matern Child Nurs J* 1992;20:124-40.
- Cusson RM, Madonia JA, Taekman JB. The effect of environment on body site temperatures in full-term neonates. *Nurs Res* 1997;46:202-7.
- Irwig L, Tosteson ANA, Gatsonis C, Lau J, Colditz G, Chalmers TC, et al. Guidelines for meta-analyses evaluating diagnostic tests. *Ann Intern Med* 1994;120:667-76.
- Pontious S, Kennedy AH, Shelley S, Mittrucker C. Accuracy and reliability of temperature measurement by instrument and site. *J Pediatr Nurs* 1994;9:114-23.
- Pugh Davies S, Kassab JY, Thrush AJ, Smith PH. A comparison of mercury and digital clinical thermometers. *J Adv Nurs* 1986;11:535-43. (Accepted 4 April 2000)

A memorable interview

The odd man out

I arrived at the psychiatric hospital's information desk. They directed me to the waiting room for the interview. In the room was a range of applicants, all coping in their own ways with the stress of waiting. Some were making stilted conversation, others were reading papers or journals. I buried my head in a journal. The tension in the room noticeably increased when the news came in that only one post was available. One applicant took this extremely badly. The young woman from the former Eastern Europe really started to panic. She said that she would never get the job as she had no experience in psychiatry and would never be chosen in preference to English applicants. She said she might as well go to the desk and tell them she no longer wanted to do the interview and go home instead. We said to her that she should not give up as interviews are hard to predict. I probably wasn't the

only one who thought deep down that there was some truth in what she said. One man, older than the rest of us, looked up from his paper and told the woman that he completely agreed with everything she said; he thought she should give up and go home. After this, despite our protestations, she left. I looked at the man behind the newspaper with a mixture of disbelief and hatred. How could anyone stoop so low to get one over a fellow applicant? Gradually the tension in the room settled again. A messenger arrived to apologise for the delay and tell us that the interviews would begin soon. At this point the man with the newspaper folded it up, wished us all good luck, left the room, and returned to his ward.

Simon Turner *specialist registrar in old age psychiatry, Manchester*