

RESEARCH METHODS & REPORTING

Differential dropout and bias in randomised controlled trials: when it matters and when it may not

Dropout in randomised controlled trials is common and threatens the validity of results, as completers may differ from people who drop out. Differing dropout rates between treatment arms is sometimes called differential dropout or attrition. Although differential dropout can bias results, it does not always do so. Similarly, equal dropout may or may not lead to biased results. Depending on the type of missingness and the analysis used, one can get a biased estimate of the treatment effect with equal dropout rates and an unbiased estimate with unequal dropout rates. We reinforce this point with data from a randomised controlled trial in patients with renal cancer and a simulation study.

Melanie L Bell *senior research fellow*¹, Michael G Kenward *professor*², Diane L Fairclough *professor*³, Nicholas J Horton *professor*⁴

¹Psycho-Oncology Co-operative Research Group (PoCoG), University of Sydney, Sydney Australia; ²Department of Medical Statistics, London School of Hygiene and Tropical Medicine, London, UK; ³Department of Preventive Medicine and Biometry, University of Colorado at Denver, Denver, CO, USA; ⁴Department of Mathematics and Statistics, Smith College, Northampton, MA, USA

Introduction

Dropout in longitudinal randomised controlled trials is common and a potential source of bias in terms of evidence based medicine. A review of 71 randomised controlled trials in four top medical journals showed dropout rates of 20% or more in 18% of the trials.¹ Similar rates were found in a review of quality of life outcomes.² In specialist journals, the rates are likely to be higher.

When dropout rates differ between treatment arms, so that fewer patients are followed up in one arm than the other, it is sometimes called “differential dropout” or “differential attrition.” Despite extensive literature on incomplete data methods for randomised controlled trials, guidance from the CONSORT reports, and the National Research Council’s recent report on missing data,³ many applied researchers have misconceptions about how to handle dropout.^{1 2 4} Two common misunderstandings about differential dropout need to be debunked:

- Myth 1—if dropout rates in longitudinal clinical trials are similar between study arms, bias is not a concern.
- Myth 2—if dropout rates are dissimilar between study arms, the results will necessarily be biased.

Although differential dropout can bias results, equal dropout rates between study arms does not imply that results will be unbiased (myth 1). The inverse is true as well: unequal dropout rates do not mean the results are biased (myth 2). Whether

dropout rates between the arms are differential or not can be a red herring; the two key factors are the type of missingness and the statistical analysis. Our aims were to show that for continuous outcome data biased estimates of treatment effects can be obtained when no differential dropout occurs (refute myth 1); unbiased estimates of treatment effects can be obtained when differential dropout occurs (refute myth 2); and when missingness is non-random, the degree of bias depends, in part, on the actual mechanism of dropout. We begin with an example from a real randomised controlled trial and then show the generalisability of our assertions with a computer simulation study (see glossary).

Example

A phase III randomised controlled trial was carried out to compare two treatments in patients with advanced renal cell carcinoma (details discussed elsewhere⁶). This disease is aggressive, and the treatment is toxic; patients discontinue treatment (one form of dropout) owing to toxicity, disease progression, and death.

Quality of life and symptom sub-studies are commonly carried out in clinical trials, as patient reported outcomes are increasingly recognised as important for understanding patients’ experience during treatment and providing support for or against experimental treatments.⁷ The renal cell trial used a quality of life questionnaire that included questions on physical and

Correspondence to: M L Bell melanie.bell@sydney.edu.au

Extra material supplied by the author (see <http://www.bmj.com/content/346/bmj.e8668?tab=related#webextra>)

Glossary

Missing completely at random (MCAR)—Outcome data are MCAR if their missingness does not depend on observed covariates or previous outcomes. As a result, no systematic differences exist between dropouts and completers. For example, if a staff member forgets to administer questionnaires, then these missing data are likely to be MCAR.

Missing at random (MAR)—Data following dropout are MAR if the future statistical behaviour of a participant's outcomes, given his or her past outcomes and covariates, would have been the same whether he/she had dropped out or not. For example, missing post-baseline quality of life data may occur in patients with low baseline quality of life. However, after this information has been taken into account (using baseline quality of life as a covariate in a regression model), no systematic differences exist between dropouts and completers.

Missing not at random (MNAR)—Data following dropout are MNAR if the future statistical behaviour of a participant's outcomes, given his/her past outcomes and covariates, would not have been the same whether he/she had dropped out or not. This yields systematic differences between dropouts and completers that cannot be adjusted for on the basis of observed quantities. For example, if a patient is too ill to fill in a quality of life questionnaire, the missing data may be MNAR if the current disease state is not captured by the previously observed outcomes.

Missing data mechanism(s)—The underlying reason(s) why data are missing. For example, this might be adverse effects or disease progression.

Multiple imputation—A method of filling in missing data by drawing from a distribution of likely values while properly accounting for the uncertainty associated with doing so. It is called multiple imputation because multiple datasets are created, analysed, and then combined to get the final results.

Single imputation—Also called simple imputation. Missing values are filled in with a single value, such as the mean of a participant's previous non-missing data, the baseline value, or the last observed value (last observation carried forward). Because this does not account for the imputation, this can cause bias and underestimation of variance.

Computer simulation study—A computationally intensive study that creates many datasets with known characteristics (such as the true treatment effect in a randomised controlled trial) to investigate and illustrate statistical properties (such as bias) of an analytical approach.

Mixed models—A flexible family of regression models that accommodate non-independent data, such as clustered, repeated measures, and longitudinal data. Fitzmaurice, Laird, and Ware provide an excellent and readable text.⁵

functional wellbeing, as well as disease specific questions. One aim was to determine whether the two treatments affected these aspects of quality of life differently. One hundred and ninety seven patients were assessed at four time points: baseline and two, eight, and 17 weeks.

The term “dropout” also refers to the situation in which all outcome data are missing after a certain point. In the renal cell trial, the dropout rates for quality of life were 64% for the control arm and 70% for the experimental arm. To investigate the myths, we averaged 50 multiply imputed datasets to create one complete dataset, in which no outcome data were missing, thereby enabling calculation of a “true” treatment effect. We then deleted observations to create datasets with equal and unequal dropout rates to investigate bias in the estimated treatment effect and its relation to the analytical approach. Details are in the web appendix.

Key concepts

Types of missing data

To investigate the effect of dropout in the example, we need to understand the different types of missing data and how they relate to bias. Rubin defined a taxonomy of missingness,⁸ shown in the glossary, which underpins the choice of appropriate analytical approach in a trial with dropout. If patients withdraw from a study for a reason unrelated to their disease or treatment (for example, because they have moved overseas) their data are probably missing completely at random, because systematic differences between them and the patients who remained in the study are unlikely. If patients withdraw from the study for reasons related to their disease or treatment (such as progression or toxicity) the missing data are either missing at random or missing not at random; their quality of life measures would have been, on average, worse than those of patients who remained in the study. One can distinguish between missing at random and missing completely at random by testing, for example, whether baseline quality of life or progression rates differ between dropouts and completers or by using a graphical approach.⁴ The figure¹ shows quality of life plotted against time for the renal cell trial, stratified by dropout time. As the trajectories differ substantially by dropout time, the data are not missing completely at random; patients with lower baseline quality of life were more likely to drop out, particularly in the experimental arm. Distinguishing between missing at random

and missing not at random from the data under analysis is generally impossible.^{6,9}

Statistical analysis: what works and what does not work

Bias in the estimate of treatment effect caused by dropout can also depend on the analytical approach used. When data are missing completely at random or missing at random, likelihood based mixed models (see glossary) can yield unbiased estimates of treatment effect.^{6,10,11} The mixed model for repeated measures is appropriate if participants are assessed at common time points, as is usual in clinical trials. This model allows the outcome to potentially differ by group and time.^{5,12} Implementation in a variety of software packages (SAS, Stata, SPSS, and R code are shown in the appendix) is straightforward. If no dropouts occur, the estimate of the difference between treatment and control arms from this mixed model will yield identical results to the simple calculation of a difference in means. Even if dropout differs between the treatment groups, if the data are missing completely at random or missing at random and an appropriate mixed model is used then estimates of the treatment effect will, on average, be unbiased. This is because information from patients with complete data is used to implicitly impute the missing values. (Other methods, such as multiple imputation, Bayesian, and weighted approaches also can give unbiased estimation,^{9,13} but these are more computationally intensive, may offer no advantage over the likelihood based approach, and are beyond the scope of this paper.) Table 1¹ shows the lack of bias with mixed models in the renal cell trial.

Unfortunately, data from randomised controlled trials are not typically analysed using methods that are valid under missing at random, which can in many circumstances lead to biased estimates.^{1,2,4} More commonly, simpler methods such as complete case analysis and single imputation are used, and these are valid only under strong and typically unrealistic assumptions. These methods have been shown to be biased if data are not missing completely at random.^{6,9,11} Complete case analysis includes only participants with complete data, which can cause bias if those who drop out are sicker. Popular single imputation methods are last observation carried forward and mean imputation. With last observation carried forward, patients with declining health and quality of life who drop out will have their missing quality of life values replaced by their last observed

values, which is likely to overestimate quality of life and yield biased estimates. Last observation carried forward, because of its unlikely assumptions about trajectories over time, is generally biased even when data are missing completely at random.^{3 9 11} The common misuse of these methods has potentially serious consequences.¹⁴ In the renal cell trial, these methods were associated with bias of up to a 74% overestimate and 72% underestimate of the treatment effect for the complete dataset (table 1). (Note that we cannot know what the bias is for the non-augmented real dataset.) This bias translates to a standardised effect size of 0.4 (0.4 of the baseline standard deviation). In some cases, the statistical significance changed as well, which may have implications for decision making.

When data are missing not at random, no method of obtaining unbiased estimates exists that does not incorporate the mechanism of non-random missingness, which is nearly always unknown. Some evidence, however, shows that the use of a method that is valid under missing at random can provide some reduction in bias.¹¹ This is the main reason that experts recommend methods such as mixed modelling as the primary analysis followed by sensitivity analyses,^{15 16} in which the stability of estimates is examined when assumptions about missingness are varied.^{3 6 9 11}

Returning to the myths, we see from table 1 that biased estimates can result from equal dropout, particularly if complete case analysis is used, suggesting that myth 1 may be false. Of the methods shown, the mixed model gave almost unbiased treatment estimates, even when the dropout rates were different, suggesting that myth 2 may also be false. To confirm this, we did a simulation study.

Simulation study

The simulation study involved creation of 10 000 datasets representing a two arm randomised controlled trial for quality of life, with 200 participants, over three time points, in which the true treatment effect was known. We deleted data to make equal and unequal dropout scenarios. We created different types of missingness and different “directions” of dropout (patients in the treatment group dropped out when they had good outcomes, and patients in the control group dropped out when they had poor outcomes). We used two common patterns for quality of life over time: a linear decline and a temporary change. We analysed each of these datasets by computing the difference in mean quality of life at the final time point between the treatment and control groups by using complete case analysis, single imputation, and a mixed model. Details are given in the appendix.

Myth 1—Table 2 (second and fourth columns) shows that equal dropout rates do not guarantee unbiased results. In the equal dropout simulation, the single imputation approaches all yielded biased estimates of the treatment effect, for every type of dropout, even missing completely at random. Last observation carried forward, for example, underestimated the treatment effect by 22% for missing completely at random for both the same and different direction mechanisms. For missing at random, last observation carried forward underestimated by 24% for the same direction mechanism but overestimated by 6% for the different direction mechanism.

Myth 2—Table 2 (third and fifth columns) shows that unequal dropout rates do not imply biased results. The mixed model yielded unbiased estimates for all missing completely at random and missing at random scenarios, regardless of equal or unequal dropout rates and differing mechanisms (directions) for dropout.

Dropout mechanism—Our third aim was to show that the magnitude of the bias depends, in part, on the dropout mechanism. The bias when using the simple methods was larger for the differing directions dropout mechanism, compared with the same direction, when data were missing at random and for all analyses, including the mixed model, for missing not at random data.

The complete case approach gave unbiased treatment estimates for the situation of equal dropout rates with the same direction of dropout. For most other situations, it gave biased results, with as much as 80% underestimation. Most of the bias took the form of underestimation, but this was not uniform, as cases of overestimation also occurred, showing that the bias that occurs when complete case and single imputation techniques are used is not predictable.

Results for the temporary change pattern of quality of life were very similar and are shown in the web appendix. The bias does not change with sample size; we did the same simulations with 2000 datasets, and the results were very similar to those shown in table 2.

Discussion

We have shown that the two myths described in the introduction are indeed myths: equal dropout rates can still yield biased estimates of treatment effects, and studies with unequal dropout rates can be analysed to produce unbiased results. Likelihood based analyses, such as the mixed model presented here, represent one approach for valid analysis when the dropout mechanism is data missing completely at random or missing at random. A non-random mechanism will typically lead to bias under any analysis that does not incorporate this (usually unknown) mechanism. Because of this, if missing not at random is suspected a sensitivity analyses should be done.^{3 6 9 11} We have discussed these concepts in the context of quality of life in oncology trials, but the results are generalisable to any randomised controlled trial with continuous outcomes and dropout.

Unfortunately, the consideration of differential dropout in the literature has omitted a discussion of key elements. In a review of randomised controlled trials of palliative care, Thomas et al stated that they “recorded an attrition analysis as performed only if the authors reported an analysis assessing if the intervention and control arms were differentially affected by attrition.”¹⁷ Heneghan et al, in considering differential attrition in randomised controlled trials in diabetes, created a “relative attrition statistic.”¹⁸ Neither of these papers discusses type of missingness or analyses used for estimation of treatment effect.

The CONSORT statement says: “There should be concern when the frequency or the causes of dropping out differ between the intervention groups.”¹⁹ Although this is certainly true, it may be misinterpreted as researchers focus on frequency instead of cause and are lulled into complacency about unbiased estimation when dropout rates are equal between trial arms. We do not wish to give the misleading impression that unequal dropout rates between arms in a clinical trial is not a problem, but we wish to stress that it does not always cause bias. An important reason to consider differential dropout is the acceptability and uptake of the intervention. Different adverse effect profiles between the arms, for example, could cause differential dropout. We recommend, as do others in the missing data field, that a sensible analytical approach for data with dropout begins with an assumption of missing at random, includes careful examination and documentation of the missingness mechanism(s), and includes sensitivity analyses if missing not

at random data are suspected.^{3 6 9 11 15} With appropriate analyses, such as use of mixed models, bias can be eliminated or reduced.

Data presented are derived (and used with permission) from a trial conducted by Memorial Sloan-Kettering Cancer Center and Eastern Cooperative Oncology Group funded by the National Cancer Institute grant CA-05826.

Contributors: MLB had the original idea, did the analyses, and wrote the first draft. DLF aided in design. All authors revised the manuscript and approved the final version.

Competing interests: All authors have completed the ICMJE uniform disclosure form at www.icmje.org/coi_disclosure.pdf (available on request from the corresponding author) and declare: no support from any organisation for the submitted work; no financial relationships with any organisations that might have an interest in the submitted work in the previous three years; no other relationships or activities that could appear to have influenced the submitted work.

Provenance and peer review: Not commissioned; externally peer reviewed.

- 1 Wood AM, White IR, Thompson SG. Are missing outcome data adequately handled? A review of published randomized controlled trials in major medical journals. *Clin Trials* 2004;1:368-76.
- 2 Fielding S, MacLennan G, Cook JA, Ramsay CR. A review of RCTs in four medical journals to assess the use of imputation to overcome missing data in quality of life outcomes. *Trials* 2008;9:51.
- 3 Panel on Handling Missing Data in Clinical Trials, National Research Council. The prevention and treatment of missing data in clinical trials. National Academies Press, 2010.
- 4 Joly F, Vardy J, Pintilie M, Tannock IF. Quality of life and/or symptom control in randomized clinical trials for patients with advanced cancer. *Ann Oncol* 2007;18:1935-42.
- 5 Fitzmaurice GM, Laird NM, Ware JH. Applied longitudinal analysis. 2nd ed. Wiley, 2011.

- 6 Fairclough DF. Design and analysis of quality of life studies in clinical trials. 2nd ed. Chapman & Hall/CRC, 2010.
- 7 Au HJ, Ringash J, Brundage M, Palmer M, Richardson H, Meyer RM, for the NCIC CTG Quality of Life Committee. Added value of health-related quality of life measurement in cancer clinical trials: the experience of the NCIC CTG. *Expert Rev Pharmacoecon Outcomes Res* 2010;10:119-28.
- 8 Rubin DB. Inference and missing data. *Biometrika* 1976;63:581-92.
- 9 Carpenter J, Kenward M. Missing data in randomised controlled trials—a practical guide. National Institute for Health Research, 2008.
- 10 Carpenter JR, Kenward MG, Vansteelandt S. A comparison of multiple imputation and doubly robust estimation for analyses with missing data. *J R Stat Soc Series A Statistics in Society* 2006;169:571-84.
- 11 Molenberghs G, Thijs H, Jansen I, Beunckens C, Kenward MG, Mallinckrodt C, et al. Analyzing incomplete longitudinal clinical trial data. *Biostatistics* 2004;5:445-64.
- 12 Mallinckrodt CH, Clark WS, Carroll RJ, Molenberghs G. Assessing response profiles from incomplete longitudinal clinical trial data under regulatory considerations. *J Biopharm Stat* 2003;13:179-90.
- 13 Robins JM, Rotnitzky A, Zhao LP. Analysis of semiparametric regression models for repeated outcomes in the presence of missing data. *J Am Stat Assoc* 1995;90:106-21.
- 14 Molnar FJ, Man-Son-Hing M, Hutton B, Fergusson DA. Have last-observation-carried-forward analyses caused us to favour more toxic dementia therapies over less toxic alternatives? A systematic review. *Open Med* 2009;3:e31-50.
- 15 Carpenter J, Roger J, Kenward M. Analysis of longitudinal trials with protocol deviations: a framework for relevant, accessible assumptions and inference via multiple imputation. *J Biopharm Stat* [forthcoming].
- 16 White IR, Horton NJ, Carpenter J, Pocock SJ. Strategy for intention to treat analysis in randomised trials with missing outcome data. *BMJ* 2011;342:d40.
- 17 Thomas RE, Wilson D, Sheps S. A literature review of randomized controlled trials of the organization of care at the end of life. *Can J Aging* 2006;25:271-93.
- 18 Heneghan C, Perera R, Ward AA, Fitzmaurice D, Meats E, Glasziou P. Assessing differential attrition in clinical trials: self-monitoring of oral anticoagulation and type II diabetes. *BMC Med Res Methodol* 2007;7:18.
- 19 Moher D, Hopewell S, Schulz KF, Montori V, Gøtzsche PC, Devereaux PJ, et al. CONSORT 2010 explanation and elaboration: updated guidelines for reporting parallel group randomised trials. *BMJ* 2010;340:c869.

Accepted: 27 November 2012

Cite this as: *BMJ* 2013;346:e8668

© BMJ Publishing Group Ltd 2013

Summary points

- Equal dropout rates between treatment arms in a randomised controlled trial do not imply that estimates of treatment effect are unbiased
- Similarly, unequal dropout rates do not imply that estimates are biased
- Bias depends on the type of missingness, the analysis method, and the effect that is being estimated
- Likelihood based methods such as mixed models can be used to estimate unbiased treatment effects, under assumptions regarding the missingness mechanism(s)

Tables**Table 1 | Treatment effect estimates and statistical significance at time 4: difference in quality of life between control and experimental arms (QoL_{control}–QoL_{experimental}) in renal cell trial**

Analysis	Dataset and dropout rates (control %:experimental %)							
	Real data (64:70)		Equal dropout (41:44)		Unequal dropout (25:51)		Unequal dropout (51:25)	
	Estimate	P value	Estimate (% bias*)	P value	Estimate (% bias*)	P value	Estimate (% bias*)	P value
True difference	?		7.2	0.002	7.2	0.002	7.2	0.002
Mixed model	8.1	0.03	7.2 (0)	0.005	7.2 (0)	0.008	8.5 (18)	<0.001
Complete case†	0.4	0.9	4.5 (–38)	0.1	2.0 (–72)	0.5	12.5 (74)	<0.001
Mean imputation‡	5.0	0.008	5.9 (–18)	0.003	3.4 (–53)	0.1	9.0 (25)	<0.001
Last observation carried forward§	6.3	0.01	5.1 (–29)	0.05	5.9 (–18)	0.03	9.9 (38)	<0.001

Complete dataset was created by averaging 50 multiply imputed datasets, then patients were dropped out using missing at random process (see web appendix for more detail); true estimate from this complete dataset is 7.2 (see web appendix for more detail).

*100×(estimate–true)/true, where estimate=difference in mean quality of life at final time point.

†No imputation used.

‡Missing values replaced with mean of patient's previously observed values.

§Missing values replaced with patient's last observed value.

Table 2| Comparison of simple methods and mixed modelling for linear decline pattern

Missingness and analysis	Percentage bias*			
	Same direction†		Different direction†	
	Equal dropout (30%)	Unequal dropout (20% treatment, 40% control)	Equal dropout (30%)	Unequal dropout (20% treatment, 40% control)
No missing data:				
Complete case	0	0	0	0
Mixed model	0	0	0	0
Missing completely at random:				
Complete case‡	-1	0	0	0
Mean imputation§	-27	-46	-27	-47
Last observation carried forward¶	-22	-40	-22	-41
Mixed model	0	0	0	0
Missing at random:				
Complete case‡	0	26	-60	-61
Mean imputation§	-28	-17	-6	-24
Last observation carried forward¶	-24	-19	6	-10
Mixed model	1	0	0	0
Missing not at random:				
Complete case‡	0	35	-80	-82
Mean imputation§	-28	-5	-44	-61
Last observation carried forward¶	-25	-2	-41	-57
Mixed model	0	-18	-40	-41

* $100 \times (\text{estimate} - \text{true}) / \text{true}$, where estimate= difference in mean quality of life (QoL) at final time point.

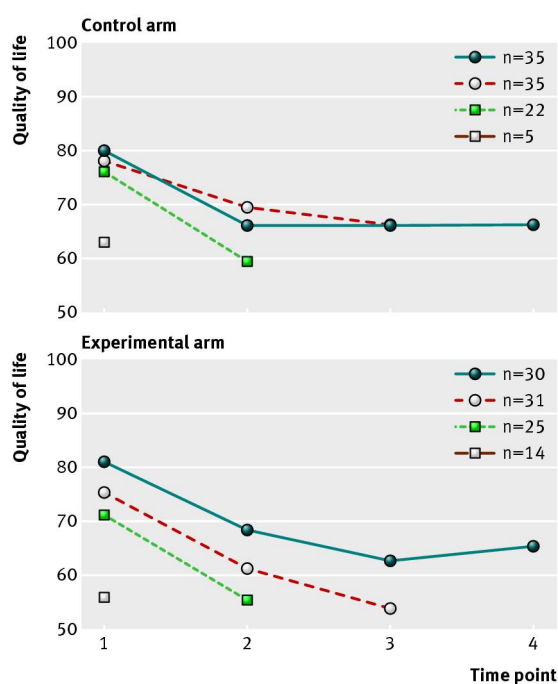
†Different direction=patients in treatment group dropped out when they had high QoL, patients in control group dropped out when they had poor QoL; same direction=patients in both group dropped out when QoL scores were low.

‡No imputation used.

§Missing values replaced with mean of patient's previously observed values.

¶Missing values replaced with patient's last observed value.

Figure



Quality of life (QoL) stratified by treatment arm and dropout time. Possible range of QoL=0-100, with higher values indicating better QoL. If data were missing completely at random (MCAR), the within arm trajectories would be indistinguishable. As patients with lower baseline QoL are more likely drop out, these data are not MCAR