



BMJ Best Practice

NEW

The new BMJ Best Practice app
Fast access to clinical answers. Anywhere

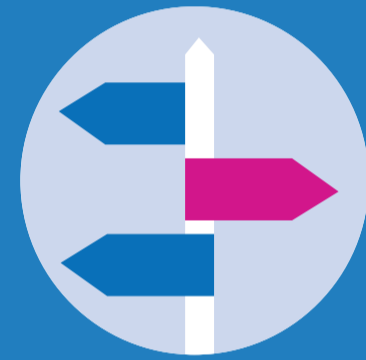
Fast download time



Minimal storage



Intuitive interface



Advanced search



Trusted content



Available offline



To access the BMJ Best Practice companion app, you must first set up a 'personal account' on the BMJ Best Practice website.

These details will be needed to log in.

For more information contact:
bestpractice.bmj.com/info/app

