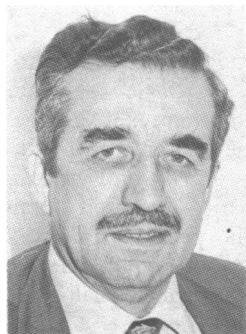


should be given a booklet containing information on complaints procedure, says the code. Complaints that raise questions of possible negligence should be left to the courts but the code adds that a parallel investigation may be needed to identify defects in procedure or administrative arrangements. Legal advice should always be sought from the legal adviser to the regional health authority whenever there may be a possibility of civil litigation.

### Orthopaedic surgery at Dundee

Mr George Murdoch has been appointed to the chair of orthopaedic surgery in the University of Dundee from 1 October. Mr Murdoch graduated from St Andrews in 1943 and later became orthopaedic registrar at Larbert Base Hospital. After service in the RAF he was appointed senior orthopaedic registrar at Bridge of Earn Hospital. Since 1974 he has been visiting professor in bioengineering in the University of Strathclyde. In 1967 he was a member of the Denny Working Party on the Future of the Artificial Limb Service in Scotland, in 1971 consultant adviser on prosthetics and orthotics to the Scottish Home and Health Department and a member of the Bioengineering Study Group, in 1973 he was chairman of the Scottish Standing Committee on Prosthetics and Orthotics, and in 1976 was a member of the Working Party on Prosthetics and the Hospital Service. He has published extensively on amputation and prosthetics.



### Kidney transplants

The number of kidney transplants undertaken in the United Kingdom and Republic of Ireland in the month ending 30 June was 49, and the number of potential recipients on file was 1057. Corresponding figures for the previous month were 60 and 1066.

### Lady Tata Memorial Trust

The trustees of the Lady Tata Memorial Trust for research in leukaemia have made the following new awards for the year 1976-77: Dr R de N Bastos (Israel); Dr L M Cashion (Austria); Dr N S Guttman (Israel); Dr P Mignatti (Italy); and Dr P Stryckmans (Belgium).

### People in the News

Dr C W G Redman has been appointed lecturer in obstetric medicine in the Nuffield Department of Obstetrics and Gynaecology of the University of Oxford and honorary consultant in the Oxford Area Health Authority (Teaching). This new post reflects the increasing importance of the specialty of perinatal medicine, particularly the diagnosis and medical management of maternal and fetal disorders.

## COMING EVENTS

**"Contribution of medical education to primary health care"**—Meeting, 1-3 September, Switzerland. Details from Administrator, Association for Medical Education in Europe, 150b Perth Road, Dundee DD1 4EA. (Tel. 0382 27076.)

**European Association for Maxillo-Facial Surgery**—Third congress, 6-11 September, London. Details from Mr J L Williams, St Richard's Hospital, Spitalfield Lane, Chichester, Sussex.

**Royal College of Surgeons of Edinburgh**—Parts I and II examinations for the Diploma of Fellowship will be held from 29 October to about 5 November in Kuala Lumpur and from 9 November to about 17 November in Hong Kong. Applications for admission and further information from the Secretary, Royal College of Surgeons, Edinburgh EH8 9DW, the Administrative Assistant, Board of Postgraduate Medical Education, Faculty of Medicine, University of Malaya, Malaysia, or Professor G B Ong, Department of Surgery, University of Hong Kong. Closing date for applications 30 July.

## SOCIETIES AND LECTURES

For attending lectures marked \* a fee is charged or a ticket is required. Applications should be made first to the institution concerned.

### Monday, 12 July

**CIBA FOUNDATION**—At Royal College of Physicians of London, 5 pm, Ciba Foundation Lecture by Professor O Hayaishi (Kyoto University): ADP-ribosylation of proteins and its biological significance.  
**KING EDWARD'S HOSPITAL FUND FOR LONDON**—2 pm, Mr Dennis Dunne (California): California—long-term care.\*

### Wednesday, 14 July

**CHRISTIAN MEDICAL FELLOWSHIP**—At New Ambassadors Hotel, London WC1, 8 am, annual breakfast. Speaker Mr Alan G Parks: The social implications of Christianity.  
**INSTITUTE OF NEUROLOGY**—5.30 pm, Dr Henry Barnett (Canada): The varieties and management of syringomyelia.  
**ROYAL SOCIETY OF MEDICINE**—5.30 for 6 pm, Jephcott Lecture by Lord Ashby of Brandon, FRs: Protection of the environment: the human dimension.

### Thursday, 15 July

**FRIENDS OF THE HEBREW UNIVERSITY OF JERUSALEM MEDICAL GROUP**—At Royal Society of Medicine, 7.30 for 8.15 pm, Henry Cohen Lecture by Professor J N Walton, on his recent visit to Israel.\*  
**MEDICAL WOMEN'S FEDERATION LONDON ASSOCIATION**—At Russell Hotel, 6.30 pm, sherry party.\*

## BMA NOTICES

### Diary of Central Meetings

JULY	
12 Mon and 13 Tues	Conference of Representatives of Local Medical Committees, 10 am.
13 Tues	Annual Conference of Community Medicine, 10 am.
13 Tues	Annual Conference of Hospital Medical Staffs (Bloomsbury Centre Hotel, Coram Street, London WC1), 10 am.
13 Tues	Hospital Junior Staffs Committee Conference (Canterbury Hall, Cartwright Gardens, London WC1), 10 am.
15 Thurs	Annual Representative Meeting (Bloomsbury Centre Hotel, Coram Street, London WC1), 10 am.
16 Fri	Annual Representative Meeting (Bloomsbury Centre Hotel), 9 am.
17 Sat	Annual Representative Meeting (Bloomsbury Centre Hotel), 9 am.
17 Sat	Adjourned Annual General Meeting (Bloomsbury Centre Hotel), 11.30 am.
17 Sat	Extraordinary General Meeting (Bloomsbury Centre Hotel), immediately following the adjourned AGM.
17 Sat	Council, immediately following the ARM.

### Division Meetings to be Held

Members proposing to attend meetings marked \* are asked to notify in advance the honorary secretary concerned.

**Ealing**—At King Edward Memorial Hospital, Sunday, 11 July, 10.30 am, annual clinical meeting.  
**Gloucestershire**—At Frogmill, Cheltenham, Friday, 16 July, 8.30 for 9 pm, BMA and BDA summer ball.\*

## UNIVERSITIES AND COLLEGES

### LONDON

**MD**—Marie A Campbell, P Marsden, P S L Tugwell, R H Webber, P D Whiteman.  
**MS**—R R Hall.

### MANCHESTER

**MD**—J Higginbottom.

### ROYAL COLLEGE OF SURGEONS OF ENGLAND

On 1 July, as a result of the postal ballot of fellows, Professor J C Goligher (1391 votes) was re-elected and Mr G C Lloyd-Roberts (629 votes) elected as members of the council of the college. In all, 3008 Fellows voted, and in addition 35 votes were found to be invalid.

## APPOINTMENTS

**NORTH-EAST THAMES RHA**—The following consultants have been appointed: Dr R A Grande (general physician with special interest in chest diseases); Dr G R Clarke (rheumatology and rehabilitation); Dr J J K Chan (anaesthesia).

**NORTH-WEST THAMES RHA**—Mr Jeffrey Jackson (consultant in accident and emergency medicine).

**WESSEX RHA**—Dr Amithodana G C Wijeyeratne (consultant in mental illness).

## Corrections

### Cows' milk protein intolerance: a possible association with gastroenteritis, lactose intolerance, and IgA deficiency

We regret that an error occurred in the article by Dr M Harrison and others (19 June, p 1501). In table VI the heading of the third column should read: "Months off milk before challenge (months since gastroenteritis)."

### Bites from black snakes

We regret that as a result of a subeditorial change in the letter from Drs D J P Barker and K J Foster (26 June, p 1591) the sense was inadvertently changed. In the fourth sentence of the second paragraph the phrase "we gave the patient intramuscular cortisone" should read "the patient was given intramuscular cortisone"; the patient was not under the care of the authors at that time.

### Register of psychiatrists in training

We regret that owing to an oversight the letter from Dr H J Walton (26 June, p 1594) was published prematurely. The letters referred to as having already been sent to postgraduate deans and others are still in course of preparation and will, it is hoped, be sent out towards the end of the month.

## Notice to authors

When original articles and letters for publication are not submitted exclusively to the *British Medical Journal* this must be stated. For detailed instructions to authors see page 6 of the issue dated 3 January 1976.

Correspondence on editorial business should be addressed to the Editor, *British Medical Journal*, BMA House, Tavistock Square, London WC1H 9JR. Telephone: 01-387 4499. Telegrams: *Aitology, London WC1*. Communications will not be acknowledged unless a stamped addressed postcard or an international reply coupon is enclosed.

Authors wanting reprints of their articles should notify the Publishing Manager, BMA House, Tavistock Square, WC1H 9JR, on receipt of proofs.

## © British Medical Journal 1976

All Rights Reserved. No part of this publication may be reproduced, stored in a retrieval system, or transmitted, in any form or by any means, electronic, mechanical, photocopying, recording or otherwise, without the prior permission of the *British Medical Journal*.