

ANSWERS ARE ON BMJ.COM

follow each question's citation

FOR LINKS TO ENDGAMES

go to bmj.com/channels/education.dtl

CASE REPORT

An elderly man who suddenly lost consciousness

While walking on the beach, a 76 year old man lost consciousness suddenly and woke up to find his family looking over him. He had no convulsions, tongue biting, or urinary or faecal incontinence. He did not recall the event, but his daughter reported that he fell over without warning.

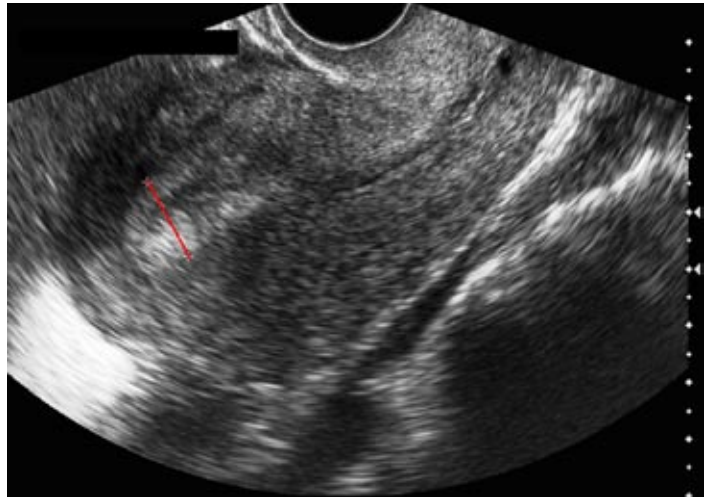
He had no history of losses of consciousness, but he did admit to occasional chest pain and breathlessness on exertion. He took no regular drugs.

Electrocardiography showed sinus rhythm with no ST/T changes. His pulse rate was regular at 68 beats/min, and his blood pressure was 132/76 mm Hg. Pulses were equal in all four extremities, and pedal oedema was not present. His venous pressure was not raised. On auscultation, his lungs were clear. He had delayed and subdued carotid upstrokes with a loud, late peaking, systolic crescendo-decrescendo murmur over the sternal border near the second intercostal space. The second heart sound was faintly audible.

- 1 What investigations would you perform?
- 2 What is this patient's condition and how would you manage it?
- 3 How would you manage patients with the same condition who were asymptomatic?

Submitted by Radhakrishnan Ramaraj

Cite this as: *BMJ* 2009;338:a3009



PICTURE QUIZ

Imaging investigation of postmenopausal bleeding

A 72 year old woman presented with a two month history of postmenopausal vaginal bleeding. Relevant medical history included insulin dependent diabetes, hypertension, and recent breast cancer. She had been taking tamoxifen for three years.

- 1 What imaging investigation is shown in the picture?
- 2 What abnormality is shown?
- 3 In a postmenopausal woman, what conditions produce these appearances?
- 4 What does the patient need next?

Submitted by Anju Sahdev

Cite this as: *BMJ* 2009;338:a2787

QUIZ:

Obsessive-compulsive disorder

To enter the quiz, go to www.onexamination.com/endgames.

The answers will be available immediately, the quiz closes at midnight on Wednesday.

Here's one question from this week's quiz on obsessive-compulsive disorder taken from the MRCPsych Paper 1 and 2 examinations.

Which one of the following statements is correct concerning defence mechanisms that occur in obsessive-compulsive disorder (OCD)? (Select one option)

- Defence mechanisms of OCD include denial
- Defence mechanisms of OCD include magical thinking
- Defence mechanisms of OCD include projection
- Defence mechanisms of OCD include projective identification
- Defence mechanisms of OCD include rationalisation

STATISTICAL QUESTION

Study design

A neurologist wanted to study the risk of stroke and transient ischaemic attack in people with a diagnosis of migraine. From her headache clinic she selected cases of migraine and controls without migraine. She collected stroke and transient ischaemic attack outcomes by writing to all subjects and their general practitioners five years later. Which study design best describes what was done?

- a Ecological study
- b Cohort study
- c Clinical trial
- d Case-control study

Submitted by John Fletcher

Cite this as: *BMJ* 2009;338:a3191