

ANSWERS ARE ON BMJ.COM

follow each question's citation

FOR LINKS TO ENDGAMES

go to bmj.com/channels/education.dtl

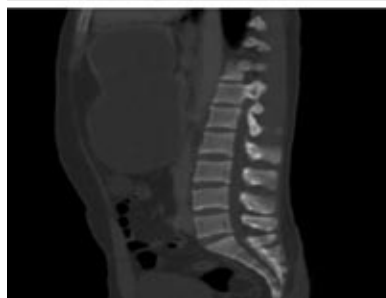
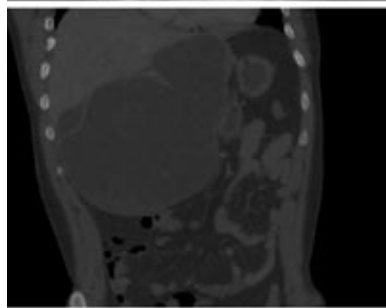
CASE REPORT

Acute dyspnoea, dysphagia, and non-specific chest pain in a smoker

A 59 year old man with a history of heavy smoking presented to casualty with two days of acutely worsening shortness of breath on a background of progressive breathlessness over three months. He had noticed his voice becoming hoarse and a lump appearing above his left clavicle, with worsening dysphagia and non-specific chest pain. On examination he had no fever, blood pressure 97/64 mm Hg, and regular heart rate of 105 bpm, with oxygen saturation of 92% on air. He had clubbing with generalised facial and neck swelling, with suffused conjunctivae and a very raised jugular venous pressure. Bilateral supraclavicular lymphadenopathy was noted. His heart sounds were muffled and, apart from a hyperexpanded chest, his lungs were clear to auscultation. Abdominal examination showed no organomegaly. A 12 lead electrocardiogram showed sinus tachycardia with low voltage complexes, and a chest radiograph showed a widened mediastinum with an enlarged globular cardiac silhouette.

- 1 What is the differential diagnosis?
- 2 What investigation is most urgent?
- 3 What is the most likely underlying cause for this man's presentation?

Submitted by R Som, A Li, R McIntosh, G W Lloyd
 Cite this as: *BMJ* 2008;337:a2678



PICTURE QUIZ

A case of hepatomegaly

A 27 year old man from Turkey presented with sudden onset epigastric pain that woke him from sleep. He had no other symptoms. On examination he had right upper quadrant abdominal tenderness and a palpable hepatomegaly of 10 cm below the right subcostal margin. Blood results showed a white cell count of 12.6×10^9 cells/l and C reactive protein of 366 µg/ml, and liver function was normal.

- 1 Describe the abnormalities in the figures
- 2 What is the likely diagnosis?
- 3 How would you establish the diagnosis?
- 4 What is the treatment?

Submitted by Dushan Thavarajah, Srilekha Attavar, Jay Menon
 Cite this as: *BMJ* 2008;337:a3090

PRIZE QUIZ

This will be our final prize quiz. In the next issue the answers will be available immediately. To enter the quiz, go to www.onexamination.com/endgames. The competition closes at midnight on Wednesday, and the winner will be announced in the print *BMJ*.

Here's one question from this week's quiz on abdominal pain in children from a range of examinations.

A six month old infant is admitted with vomiting. His parents report that he possets often, and may bring up the whole bottle up to two hours after a feed. His full blood count shows a microcytic anaemia.

What is the most likely diagnosis? (Select an option)

- Alpha1 antitrypsin deficiency
- Cystic fibrosis
- Duodenal atresia
- Hiatus hernia
- Pyloric stenosis

Answers to this question can be viewed at
www.onexamination.com/Endgames/LastEndgame.aspx.

STATISTICAL QUESTION

Response rates to surveys

A survey was conducted in a maternity unit to estimate the prevalence of the use of marijuana during pregnancy. Five hundred women were surveyed and questionnaires were received back from 250. Which, if any, of these statements are true?

- a Selection bias may be reduced by increasing the sample size
- b If women answer truthfully then the results will not be biased
- c If women answer truthfully the lower limit of prevalence may be calculated
- d Selection bias may be removed by comparing the personal characteristics of non-responders and responders

Submitted by John Fletcher
 Cite this as: *BMJ* 2008;337:a3094

The winner of the prize quiz on trauma was Christopher Ho and the winner of the quiz on radiology was Julie Patullo