

FOR SHORT ANSWERS

See p 414

FOR LONG ANSWERS

Go to the Education channel on bmj.com

We welcome contributions that would help doctors with postgraduate examinations
See bmj.com/endgames for details

ON EXAMINATION QUIZ Inflammatory bowel disease

The answers to these questions, and more questions on this topic, are available from www.onexamination.com/endgames until midnight on Wednesday.

This week's quiz is on inflammatory bowel disease and is taken from the OnExamination revision questions for the MRCS Part 1.

Toxic dilation of the colon is associated with which of the following:

- A Diverticulosis
- B Coeliac disease
- C Hirschsprung's disease
- D Crohn's disease
- E Pseudomembranous colitis

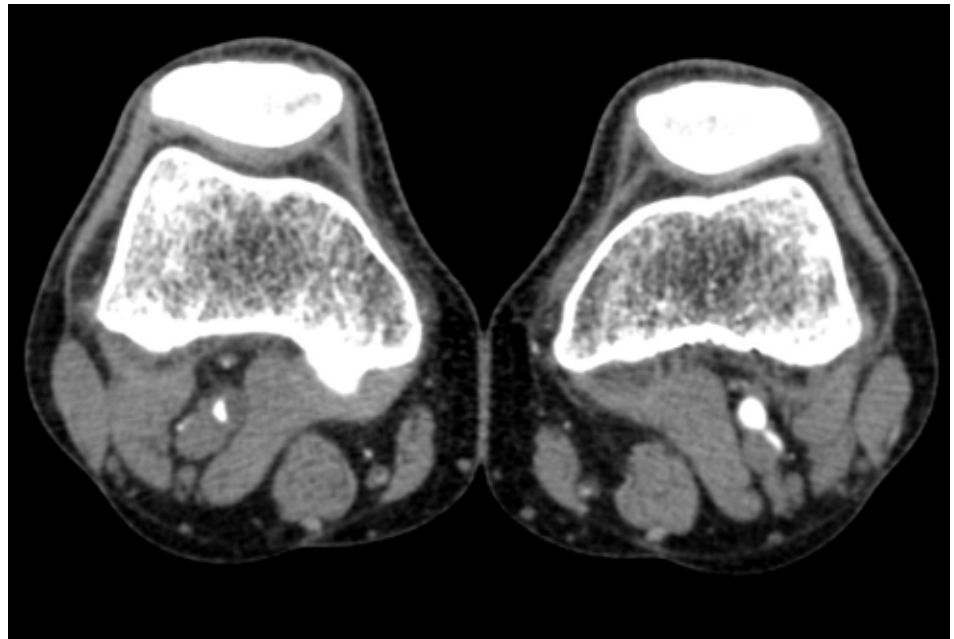
A 33 year old woman presented to the surgical emergency unit with worsening crampy lower abdominal pain (which she had been experiencing intermittently for four weeks), diarrhoea (8-10 times a day), and loss of appetite. She had lost two stone in the past three months. She had not noticed blood in her stools.

On examination she seemed pale and her temperature was 37.8°C. Abdominal examination revealed a mildly tender mass over her right iliac fossa. Per rectal examination revealed an empty rectum but a few tender abscesses in the perianal region.

What is the most likely diagnosis in this patient?

- A Acute appendicitis
- B Acute colonic diverticulitis
- C Crohn's disease
- D Intestinal amoebiasis
- E Ulcerative colitis

PICTURE QUIZ An unusual case of calf pain



A healthy 45 year old man with a passion for rock and roll presented to our vascular outpatients clinic. Over the previous few months he had been unable to continue his dancing sessions because of pain in his right calf, which started a few minutes after he started dancing. He had also noticed that the pain would come on after 200 m of walking.

On examination he was well, with a blood pressure of 140/80 mm Hg and a pulse of 80 beats/min, which was regular and of good volume. He had normal heart sounds and normal peripheral pulses in the upper limbs and in the left leg but absent pulses distal to the femoral pulse in the right leg. The ankle brachial pressure index was normal on the left but 0.7 on the right. He had smoked 20 cigarettes a day since he was a teenager but was

otherwise fit and well. His fasting blood glucose and haemoglobin were normal, as was his preoperative electrocardiogram.

A computed tomography angiogram of his lower limbs had been performed before he was referred to our clinic.

- 1 What abnormality is present on the computed tomography angiogram?
- 2 What is the most likely diagnosis, and what is the differential diagnosis?
- 3 What further tests can be done to confirm the diagnosis?
- 4 How should this condition be managed?

Submitted by Noel Cassar, Branko Dunjic, and Kevin Cassar
Cite this as: *BMJ* 2010;340:c716

STATISTICAL QUESTION Cross sectional studies

Researchers investigated public perception, anxiety, and behaviour with regard to the outbreak of swine flu. A cross sectional survey was used, with random dialling of telephone numbers in England, Scotland, and Wales. In total, 997 adults aged over 18 years—who had heard of swine flu and spoke English—were interviewed between 8 May and 12 May 2009. Proportional quota sampling was used with quotas based on age, sex, work status, region, and social grade.

Which of the following statements, if any, are true?

- a) The cross sectional survey was an observational study
- b) The respondents were a random sample of the population in England, Scotland, and Wales
- c) The survey was prone to volunteer bias
- d) It was possible to investigate how public perception, anxiety, and behaviour in relation to the swine flu outbreak changed over time

Submitted by Philip Sedgwick
Cite this as: *BMJ* 2010;340:c846